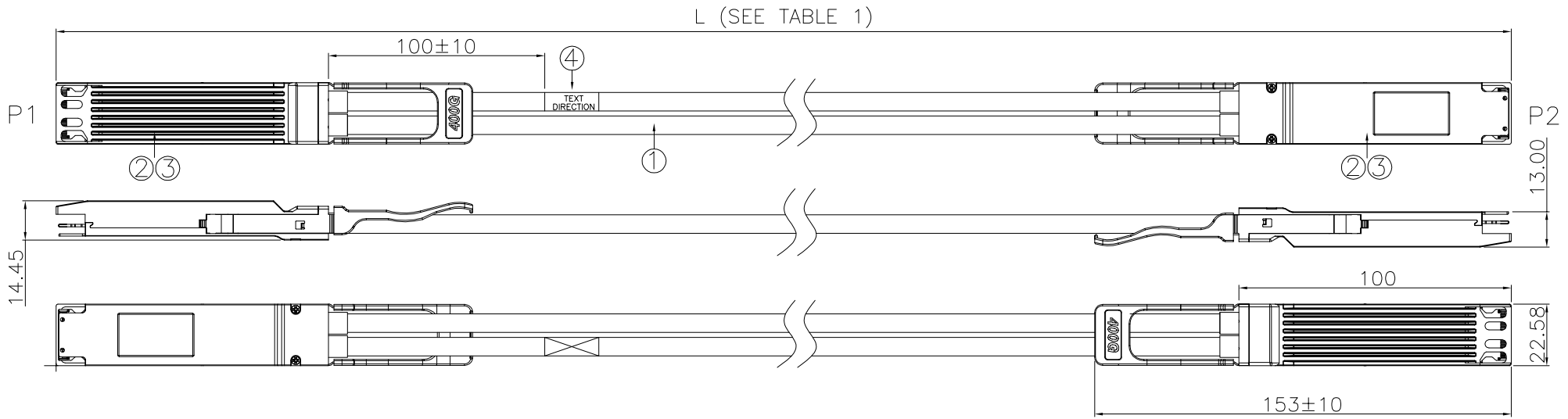
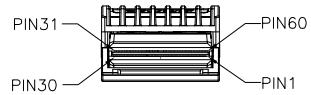


RoHS
compliant



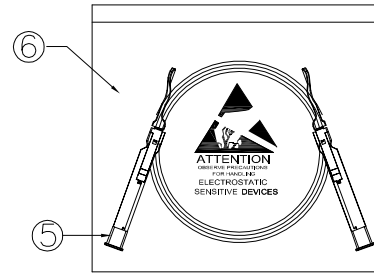
NOTE:
1. 100% OPEN&SHORT TEST.
2. LABEL INFO:
3.1 XXXXXXXXXX= P/N (SEE TABLE 1)
3.2 XXAWG-X.Xm (SEE TABLE 1)
3.3 BARCODE1 TYPE: CODE 128.
3.4 BARCODE1 CONTENT: YYWDLSSSS.
YY= THE LAST 2 DIGITS OF YEAR.
WW=WEEK OF THE YEAR.
D=DAY OF THE YEAR.
L=LOCATION(1=DE QING)
SSSS=SERIAL NO. (FROM 00001,.....99999)



OSFP 60PIN ASSIGNMENT



LABEL INFO



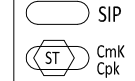
PACKAGE

TABLE 1

XXAWG	X.Xm	L(mm)	TOL.
28	3.0m	3000	±50
28	2.5m	2500	±50
28	2.0m	2000	±40
28	1.5m	1500	±40
28	1.0m	1000	±30
30	2.0m	2000	±40
30	1.5m	1500	±40
30	1.0m	1000	±30
30	0.5m	1000	±30
XXAWG	X.Xm	L(mm)	TOL.

ITEM	DESCRIPTION	Q'TY
6	ANTI-STATIC BAG,370X300mm	1
5	OSFP ANTI-STATIC DUST COVER,BLACK	2
4	P/N LABEL,BLACK TEXT&WHITIE GROUND	1
3	OSFP 60PIN CABLE END COVER KIT W/BLACK PULL TAB	2
2	OSFP 60PIN CABLE END PCBA (30u") W/ EEPROM	2
1	TWIN-AX XXAWG(SEE TABLE1)X8PAIR CABLE ,100ohm, BLACK, UL APPROVED	A/R

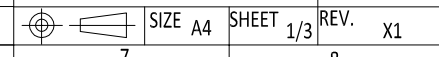
UNLESS OTHERWISE SPECIFIED TOLERANCE			
0.	±0.30	0.°	±2°
.00	±0.20	0.0°	±1°
.000	±0.10		
	±0.05		



CHANT SINCERE CO.,LTD
TEL:+886-2-8647-1251 WWW.COXOC.COM.TW

SCALE: AS SHOWN UNIT: mm
DRAWN: SUNNY 28JUN2023
CHECKED:
APPROVED:

TITLE: OSFP TO OSFP CABLE ASS'Y (400GBASE-CR8 APPLICATION)
PART NO.



CODE: G16 CUSTOMER:

ZONE	REVISION	DESCRIPTION	DATE	SIZE A4	SHEET 1/3	REV. X1	CODE: G16	CUSTOMER:
1	2	3	4	5	6	7	8	9