



CHANT SINCERE CO., LTD.



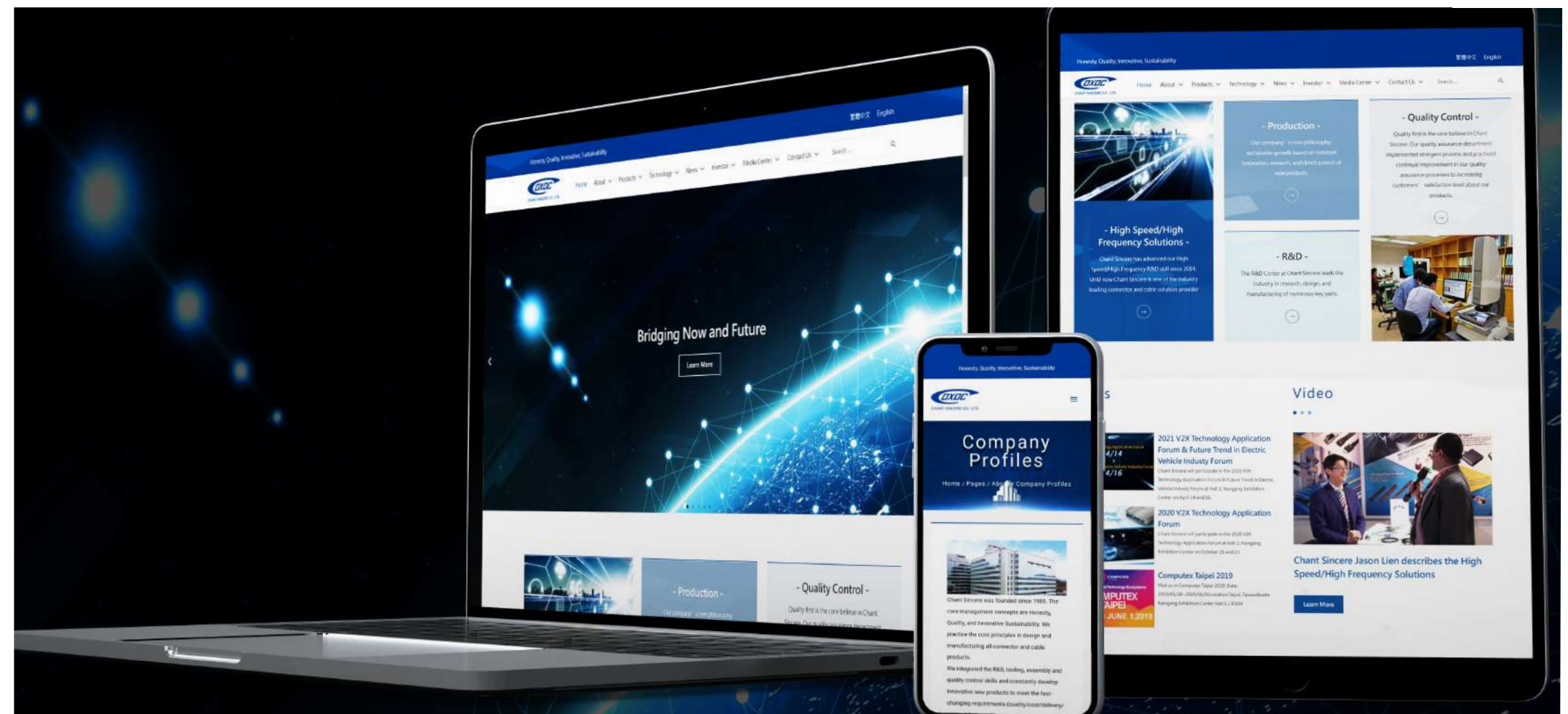
Consumer Electronics

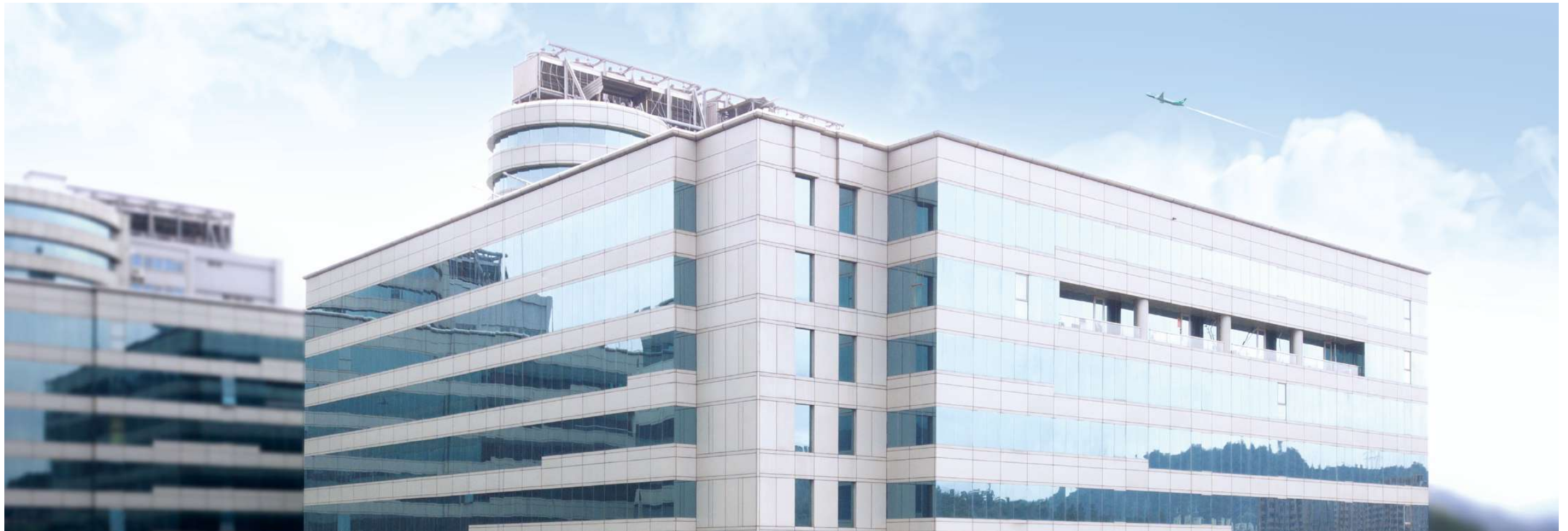
- ▾ CFexpress
- ▾ CFast



Table Of Contents

About Chant Sincere	03
Quality Systems	05
Competencies & Technology	07
CFexpress Series	09
CFexpress Type A	11
CFexpress Type B (Push Push)	13
CFexpress Type C & D Connector	17
CFAST Series	19
CFAST with Ejector	21





About Chant Sincere

Chant Sincere Co., Ltd. was set up in 1985, with the management concept of "Integrity, Innovative, Quality, Sustainability" to design and manufacture connector and cable. Keep developing new innovative products and integrating vertically from R&D, tooling, assembly and quality control to meet the demands (quality-cost/delivery) from customers. Chant Sincere Co., Ltd. has been constructing several of product families to provide a total solution to customers.

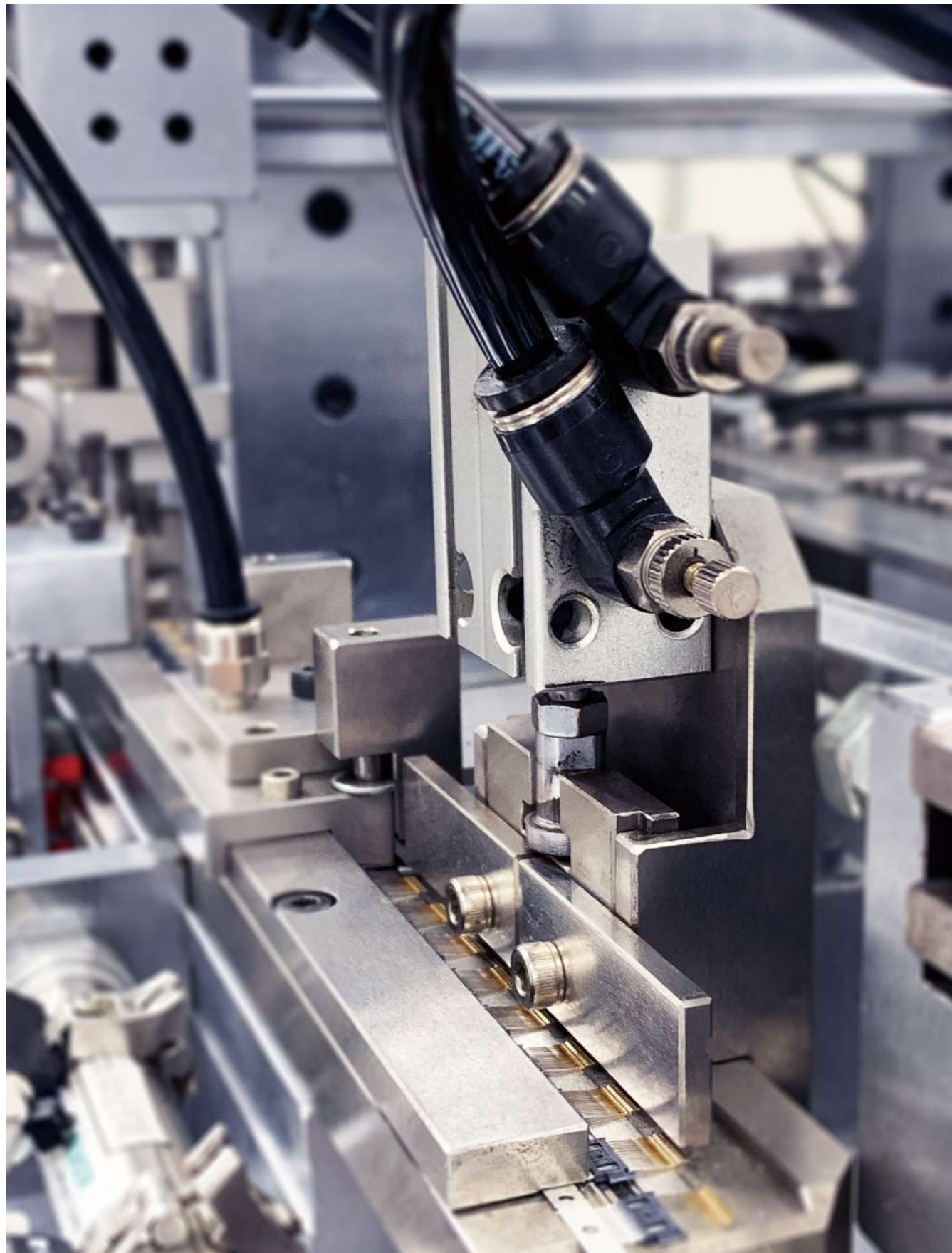
The connector and cable products are widely used in many different applications, such as Computing, Industrial & Automation, Telecommunication, Automotive, Waterproof, Consumer and Medical Industry.

Chant Sincere won the "National Bedrock Award" & "Small Giant Award" from Taiwan Connector maker competition and got many "Best Supplier Awards" from Global customers. We are focusing on improving our design and manufacture technology, and we have been applying for a lot of international patents for our products including I/O connector, Board to Board Connector, Waterproof Connector, Industrial Connector, Automotive Connector, Memory Card Connector and Adaptor, High Speed connector/cable (USB3.1), Audio & Video connector and cable (HDMI, DisplayPort)...etc.

Chant Sincere Co., Ltd. has been growing up as a global professional manufacturer for connector and cable.

The Core Competence of Chant Sincere Co.,Ltd. including.

- Over 40 Years Manufacture Experience
- National Awards Rising Sun Awards/Best Supplier Awards
- Vertical Integration (Design, Tooling, Manufacturing, Test)
- Automation Capability
- Precise Tooling Center
- Wide Range of Product Line
- ODM/OEM Capability
- Customized Capability
- Quality System (ISO, IATF)
- Systematic Testing Process



Quality Systems

Chant Sincere (hereinafter referred to as C.S.) Quality Assurance department meets our customers' quality requirements by practicing continual improvement in our quality assurance processes and increasing customers' satisfaction in the quality of our products.

The effectiveness of QA operation is certified by well-known organizations such as ISO9001 Quality Assurance Management System, ISO 14001 Environmental Management System, ISO/IATF 16949 for Automobile Industry Quality Management System, and ISO13485 Medical Devices Quality Management System. C.S. integrated supply chain and devoted staff has enabled us to build a solid foundation and core capability to better serve our customers. It is principal to always meet and exceed customer expectation by providing superior products and services. Our ultimate goal is to create value for our customers by building collaborative and mutually beneficial relationships.



ISO 14064-1 / ISO 9001 / ISO 14001 / IATF 16949 / ISO 13485



Competencies & Technology

The R&D Center at Chant Sincere leads the industry in research, design, and manufacturing of numerous key parts. This center has successfully developed for both wired and wireless solutions for computer peripherals, communication systems, and automobiles/industrial/medical equipment. Our solid R&D team formed a strong foundation in advance manufacturing technology and superior quality control that also enabled high value adding service for customers.

USB type C connector is an example of the fruits of our research. This miniature and unidirectional interface provides many useful functions such as lighting data transfer rate up to 10 Gbps, DP ALT Mode high-definition video signal support, and brilliant 100W charging capability. Chant Sincere advanced the research further into higher specs such as USB 3.2 and USB 4.0 and offers customized solution for several of industrial applications. We delivered comprehensive solutions in bridging the diverse need for new interface and solve on-going product design issues for customers.

QSFP-DD is an ultra-fast interface that transmits data at 400Gbps speed.

At this speed, stringent requirement for signal integrity and operating temperature is inevitable which imposed huge challenges for the industry. At Chant Sincere, we implemented comprehensive computational software, state of art measuring equipment and eminent R&D capability to aid the solution delivering process. The analysis process includes simulation under CST MSW (Time Domain Simulation), ANSYS HFSS (Frequency Domain Simulation) for signal integrity as well as real-time measurement using test boards and PNA (up to 43.5GHz) to deliver quality reports for signal integrity (S-parameter, Gain compression, conversion gain/loss, noise level). We further performed simulation of its operating temperature using Icepak (Heat transfer and fluid flow simulator). This enabled the performance optimization for heat dissipation solution. With the above R&D skills we successfully delivered the desired professional service within the shortest time frame for our customers.



CFexpress

CFexpress Application

Professional video features are growing more powerful, with 4K video enjoying widespread use and 8K video already gaining adoption in high-end production environments. Ultra-High Definition TV production environments need more advanced digital formats, such as RAW 4K @ 60 frames per second, which requires reliable and sustainable performance of 700MB/sec and higher. In addition, next generation video applications, such as 8K and even professional 360/VR productions, produce video with incredibly high throughput that exceed legacy CFA cards' data recording of ~600MB/sec, and can benefit from such new spec which supports up to 3.2GB/sec. (Type C)

CFexpress Type A Host Connector (1 Channel PCIe)

CFexpress Type B Lids (2 Channel PCIe)

CFexpress Type B Host Connector (2 Channel PCIe)

CFexpress Type C & D Host Connector (4 Channel PCIe)

Application

- SSD
- 8K HD-entertainment
- DSC
- Drone
- Storage

Product Characteristics

- PASS PCIe Gen3 and Gen4 Speed
- High data bit rate up to 16 Gbits/s
- Excellent resistance against cross-talk and RF EMC
- Mechanical robustness according to automotive requirements
- THR and THT capable for automated assemblies

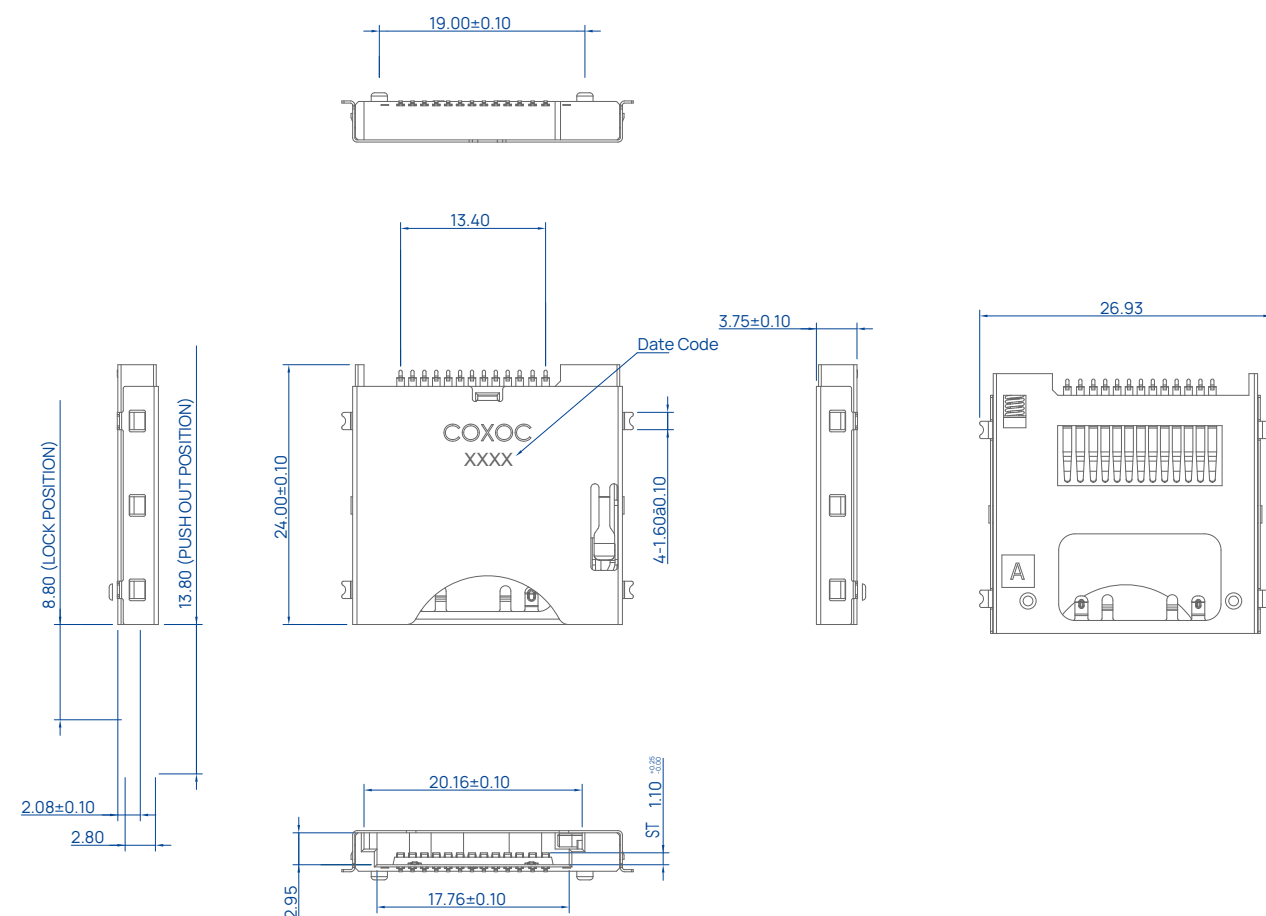
CFexpress Type A



CFexpress Type A
Part No. 57527010040



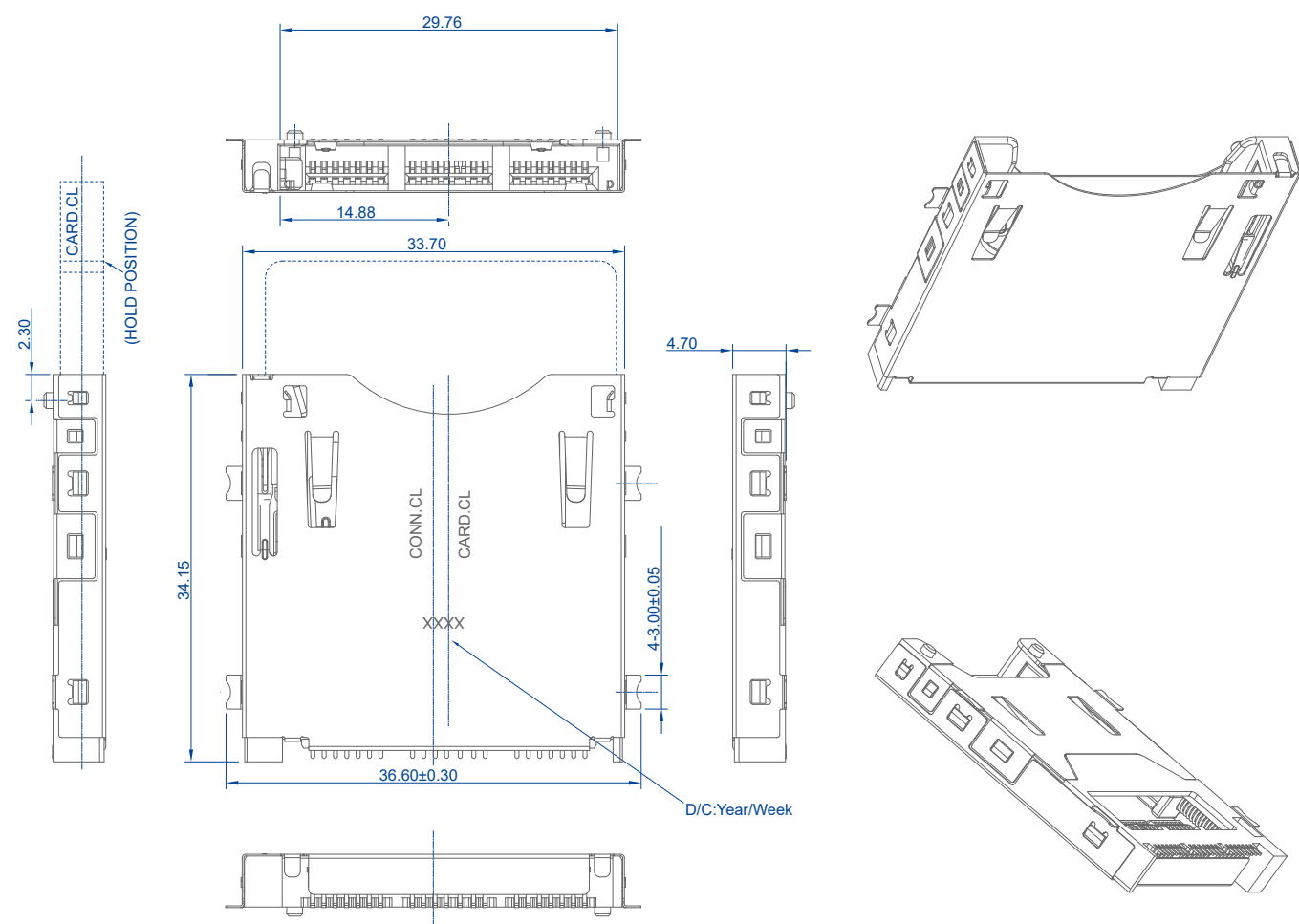
CFexpress Type A with Shell Ground
Part No. 57527010010



Specification

Part No.	5752701XXXX
Contact	21
Material	
Insulator	LCP
Contact	YCUT-FX-EH/C17200
Shell	SUS304 3/4H
Spring	SWP-B
Cam Rod	SUS304H
Contact Plating	
Under Plate	50u" ~ 120u" Nickel
Contact Area	5u" Selective Gold
Solder Tails Area	80u" ~ 200u" Tin (Lead Free)
Electrical	
Rated Voltage	500 Vrms AC for 1 Min
Current Rating	1.0 A Min for Signal pin 3.0 A Min for Power pin
Contact Resistance	Initial : 55 M Ohm Max Final : 40 M Ohm Max.
Insulation Resistance	000 M Ohm Min. at 500 VDC/Minute
Temperature Range	-25°C to +85°C
Mating Cycles	12000 Insertions

CFexpress Type B (Push Push)



Specification

Part No.	57526010020	
Contact	21	
Material		
Insulator	Material	Thermal Plastic UL94V-0
Contact	Material	Copper Alloy
	Plating	Under Plate:50u" Nickel Contact Area:1u" ~30u" Selective Gold Solder Tails Area:80u" Min. Tin/Lead Free (Matte Tin)
Metal	Material	Stainless
	Plating	Non
Spring	Material	SWP-B
	Plating	Under Plate:Nickel
Electrical		
Rated Current (Max.)	1.0 AMP (DC) Max.	Mate Connector Measure By Dry Circuit. EIA-364-70 Method 2
Rated Voltage(Max.)	100 V	
Insulation Resistance	Initial:1000 MΩ Min. Final:100 MΩ Max.	Apply 500 VDC Between Adjacent Terminals or Ground. EIA-364-21
Contact Resistance	Initial:40 MΩ Max.at initial state. Final:55 MΩ Max.	EIA-364-23B
Dielectric Strength	No Breakdown	Apply 500 VAC for 1 Minute Between Adjacent Terminals or Ground. EIA-364-20
Temperature Range	-25°C to +85°C	95% R.H. Max.
Storage Temperature	-40°C to +100°C	
Mechanical		
Insertion Force(Max.)	50 N	Insert Connectors at The Speed Rate of 25±3 Mm/Min.
Extraction Force	4.9 N / 55 N (Min./Max.)	Retention Connectors at The Speed Rate of 25±3 Mm/Min.
Retention Force(Min.)	9.8 N	Apply Axial Pull Out Force at 25±3 Mm/Min. on The Assembly in The Housing.
Durability	10,000 Cycle	Operations Using Memory Card at The Rate of 400-600 Cycles within 1 Hours

CFexpress Type B

Product List	Description	Part No.
	CFexpress Type B, Non Push	57526020010
	CFexpress Type B, Push Push	57526010020
	CFexpress Type B, Push with Lock	57526010010
	CFexpress Type B, Top Lid	67551020020
	CFexpress Type B, Bottom Lid	67551020030



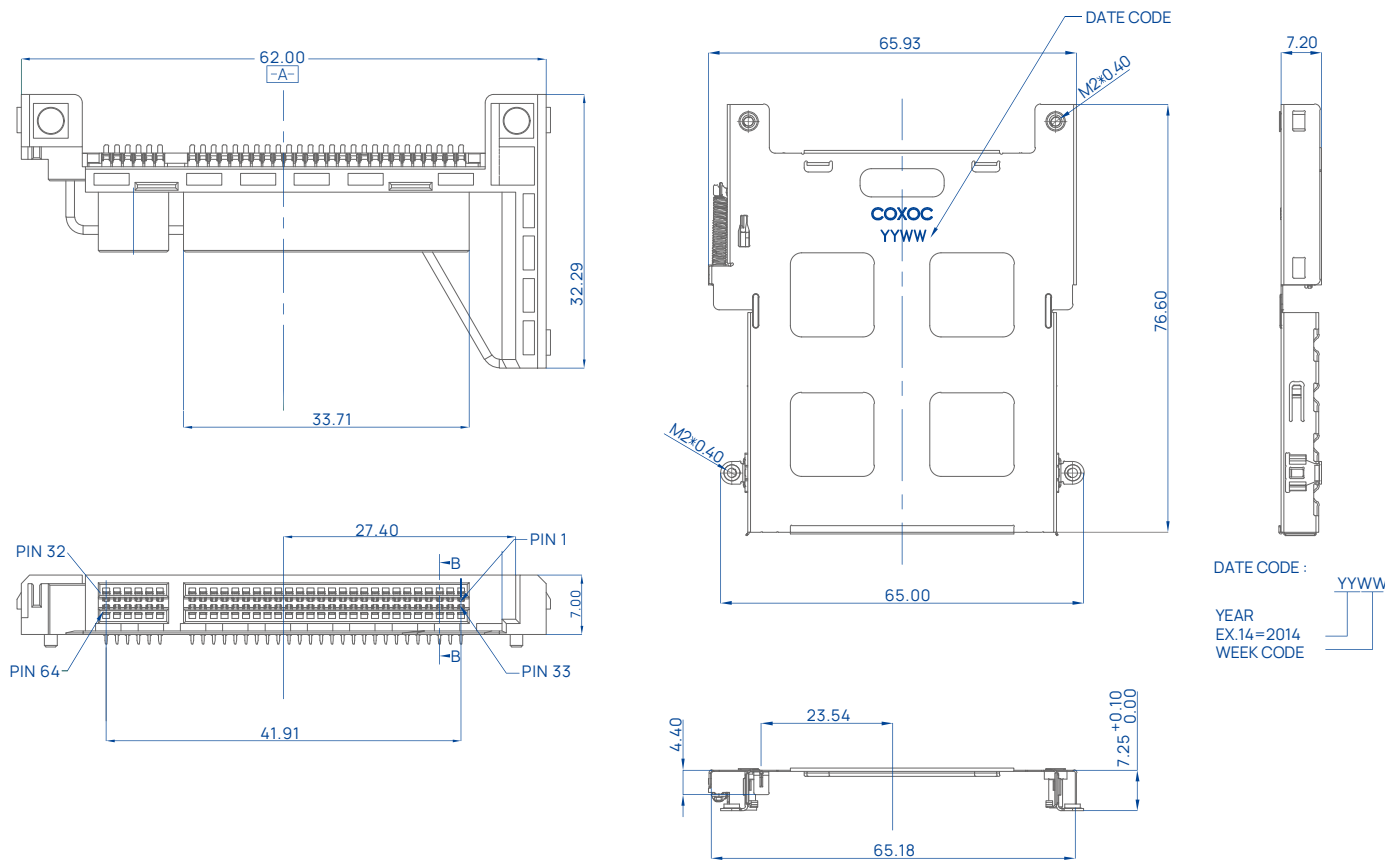
CFexpress Type C & D Connector



CFexpress Type C & D Connector
Part No. 57528010010



CFexpress Type C & D Bracket
Part No. F7528010010



Specification

Part No.	57528010010	
Contact	64	
Material		
Insulator	Material	Thermal Plastic UL94V-0
Contact	Material	Copper Alloy
	Plating	Under Plate:50u" Nickel Contact Area:1u" ~30u" Selective Gold Solder Tails Area:100u" ~200u" Tin/Lead Free (Matte Tin)
Metal	Material	Stainless
	Plating	Non
Spring	Material	Copper Alloy
	Plating	Under Plate : 50u" Nickel
Electrical		
Rated Current(Max.)	3.0 AMP (DC) Max.	Mate Connector Measure by Dry Circuit.
Rated Voltage(Max.)	100 V	
Insulation Resistance	Initial:1000 MΩ Min.	Apply 500 VDC Between Adjacent Terminals or Ground.
Contact Resistance	40mΩ Max. at initial state. 60mΩ Max. after endurance test.	Mate Dummy Card Measure by Dry Circuit, 20mV Max, 10m A.
Dielectric Strength	No Breakdown	Apply 500 VAC for 1 Minute Between Adjacent Terminals or Ground.
Temperature Range	-55°C to +85°C	95% R.H. Max.
Storage Temperature	-25°C to +65°C	
Mechanical		
Insertion Force(Max.)	50 N	Insert Connectors at The Speed Rate of 25±3 Mm/Min.
Extraction Force	4.9 N / 55 N (Min./Max.)	Retention Connectors at The Speed Rate of 25±3 Mm/Min.
Retention Force(Min.)	9.8 N	Apply Axial Pull Out Force at 25±3 Mm/Min. on The Assembly in The Housing.
Durability	10,000 Cycle	Operations Using Memory Card at The Rate of 400-600 Cycles within 1 Hours



CFast

CFast Application

A variant of CompactFlash known as CFast is based on the Serial ATA bus, rather than the Parallel ATA/IDE bus for which all previous versions of CompactFlash are designed. CFast is also known as CompactFast. CFast 1.0/1.1 supports a higher maximum transfer rate than current CompactFlash cards, using SATA 2.0 (300 MByte/s) interface, while PATA is limited to 167 MByte/s using UDMA 7.

The CFast 2.0 specification was released in the second quarter of 2012, updating the electrical interface to SATA 3.0 (600 MByte/s). As of 2014, the only product employing CFast 2.0 cards was the Arri Amira digital production camera, allowing frame rates of up to 200 fps; a CFast 2.0 adapter for the Arri Alexa/XT camera was also released.

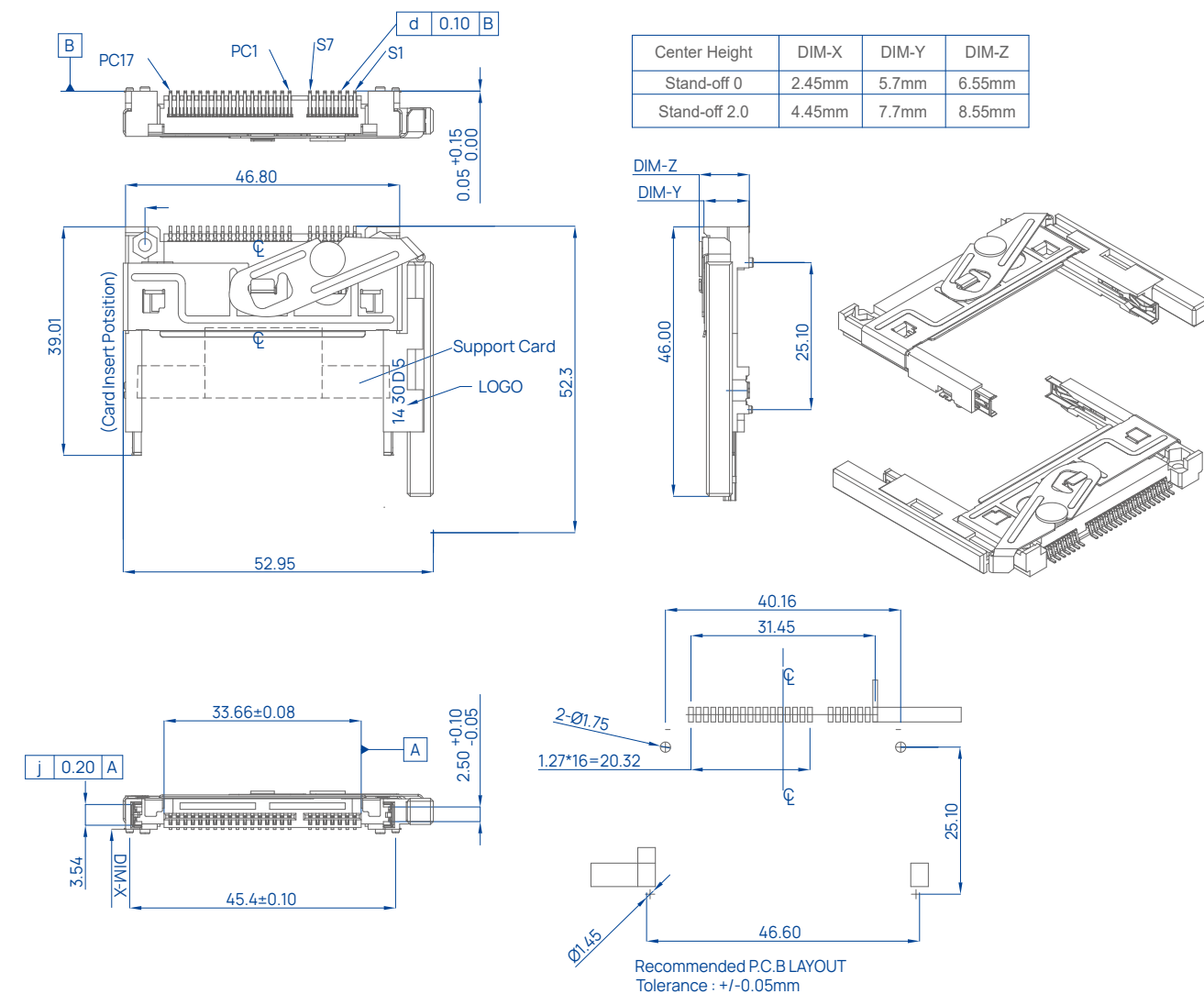
Application

- Digital Camera
- Readers for various other Flash media
- Microdrive
- RFID
- Barcode scanner
- GPS
- Wi-Fi
- Ethernet
- Bluetooth

Product Characteristics

- PASS PCIe Gen3 and Gen4 Speed
- High data bit rate up to 16 Gbits/s
- Excellent resistance against cross-talk and RF EMC
- Mechanical robustness according to automotive requirements
- THR and THT capable for automated assemblies

A 3D perspective view of a metal bracket assembly. The bracket is made of silver-colored metal and has a Z-shaped profile. It features two black plastic connectors, one at each end of the long arm. A small black circular component is visible on the top surface of the bracket.



Part No.	5750104XXXX
Contact	24
Material	
Insulator	Thermal Plastic ,UL94V-0
Contact	Copper Alloy
Shell	Steel
Contact Plating	
Under Plate	50u" ~ 100u" Nickel
Contact Area	15u" Selective Gold
Solder Tails Area	100u" ~ 200u" Tin (Lead Free)
Electrical	
Current Rating	1.5 Amps Max.
Contact Resistance	30 Mohms Max.
Insulation Resistance	1000 Mohms Min. @500 VDC
Dielectric Withstanding Voltage	500 VAC / Minute
Temperature Range	-55°C DC to +85°C DC

CFast Series

Product List	Description	Part No.
	50Pin, Male, Black	5751501XXXX
	50Pin, SMT Type, 0mm Stand off Distance	5752303XXXX
	50Pin, SMT Type, 2.2mm Stand off Distance	57523040010
	50Pin, SMT Type, 1.64mm Stand off Distance	5752301XXXX
	50Pin, SMT Type, 1.64mm Stand off Distance	5752302XXXX

CFast Series

Product List	Description	Part No.
	50Pin, SMT Type, Male, w/ Pick Pad, 2.2mm Stand off Distance	5752201XXXX
	50Pin, Slim Type, 2.2mm Stand off Distance	5752402XXXX
	50Pin, Slim Type, w/ Pick Pad, 0mm Stand off Distance	5752401XXXX
	50Pin, Slim Type, w/ Pick Pad, 2.2mm Stand off Distance	5752403XXXX
	50Pin, Slim Type, 40.16mm Pos Distance	5752501XXXX

CFast Series

Product List	Description	Part No.
	24Pin, Female, Tray, Black	57502010010
	24Pin, Bottom Cover	F7502020010
	24Pin, Top Cover	F75020110010
	24Pin, Male, w/o Ejector, 0mm Stand off Height	57501030010
	24Pin, Male, w/o Ejector, 2.0mm Stand off Height	57501030020
	24Pin, Male, w/ Ejector, 2.0mm Stand off Height	57501040010





 **CHANT SINCERE CO., LTD.**

7F-2, No 188, Sec. 3, Datong Road
Xizhi, New Taipei City 22103, Taiwan

 www.coxoc.com.tw

 +886-2-8647-1251

 service@coxoc.com.tw



www.coxoc.com.tw/en