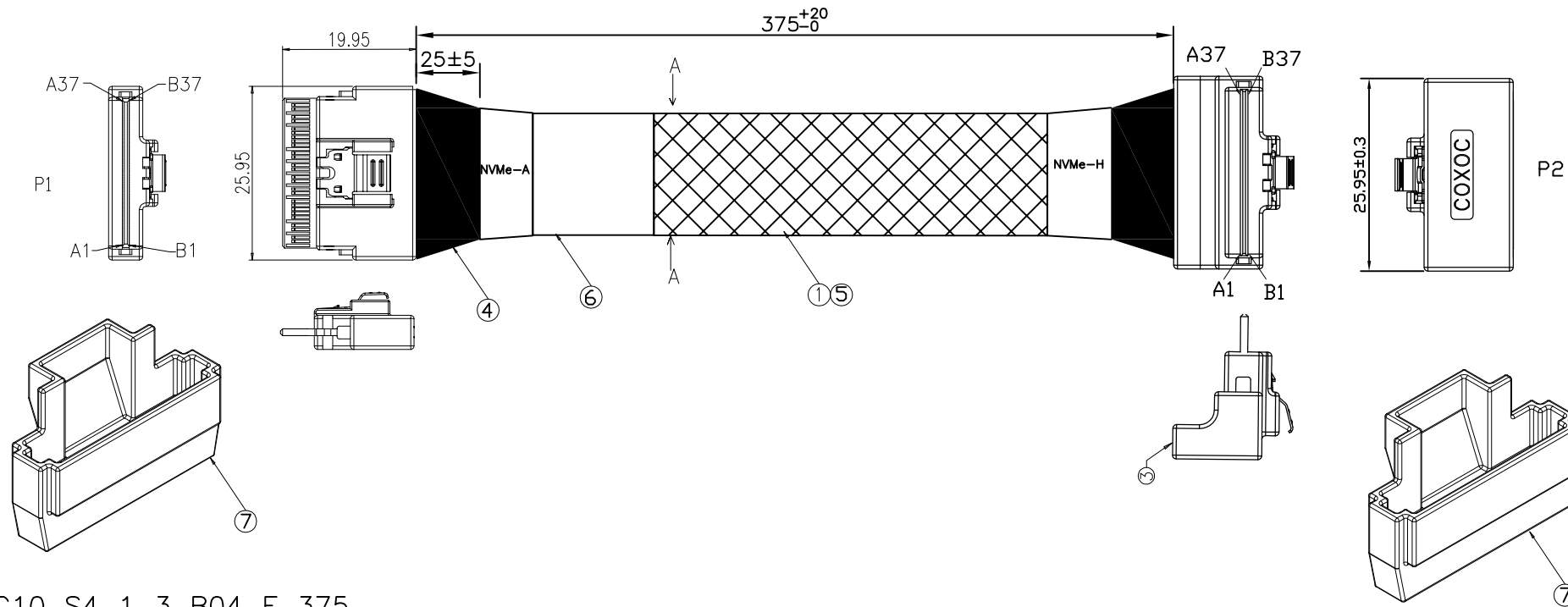


NOTE:
 1. THE CABLE ASSEMBLY SHOULD BE RoHS2.0 COMPLIANT.
 2. THE CABLE ASSEMBLY SHALL MEET BELOW IMPEDANCE REQUIREMENT:
 TERMINATION AREA: 85±15% OHMS, CABLE ABSOLUTE AREA: 85±10% OHMS.
 3. ELECTRICAL AND MECHANICAL PERFORMANCE SHOULD MEET THE PCIE GEN4 INDUSTRIAL STANDARD.



PART NO

C10 S4 1 3 B04 E 375
 1 2 3 4 5 6 7

1. SERIES NO.
 C10=SATA TYPE
 2. CONNECTOR OPTION
 S4= Slimline SAS/ Slimline RA
 3. CONNECTOR TYPE
 1=M/M

4. CABLE COLOR
 3=BLACK
 5. TYPE.
 6. GREEN OPTION:
 E=RoHS
 7. LENGTH NO.
 375=375mm

8	LABEL:14*74MM, WHITE	2
7	protective cover	2
6	LABEL 70*40mm WHITE	1
5	EXPANDO TUB:7.0mm,Black,SINGLE(OD7~25mm)	A/R
4	ACETATE TAPE:W=1 INCH	A/R
3	SLIMLINE 8i CONNECTOR,Right angel,Au30'	1
2	SLIMLINE 8i CONNECTOR,Vertical type,Au30'	1
1	SAS Cable:UL20744(#30x2C+2*D+A+HM)*24C,Silver Plated 85 Ohm 24G	A/R
ITEM	DESCRIPTION	QTY

UNLESS OTHERWISE SPECIFIED TOLERANCE	
ANG.	±0°
0.	±0
.0	±0.5
.00	±0.3

SCALE: AS SHOWN	UNIT: mm
DRAWN Yang	04/22/2019
CHECKED	/ /
APPROVED	/ /

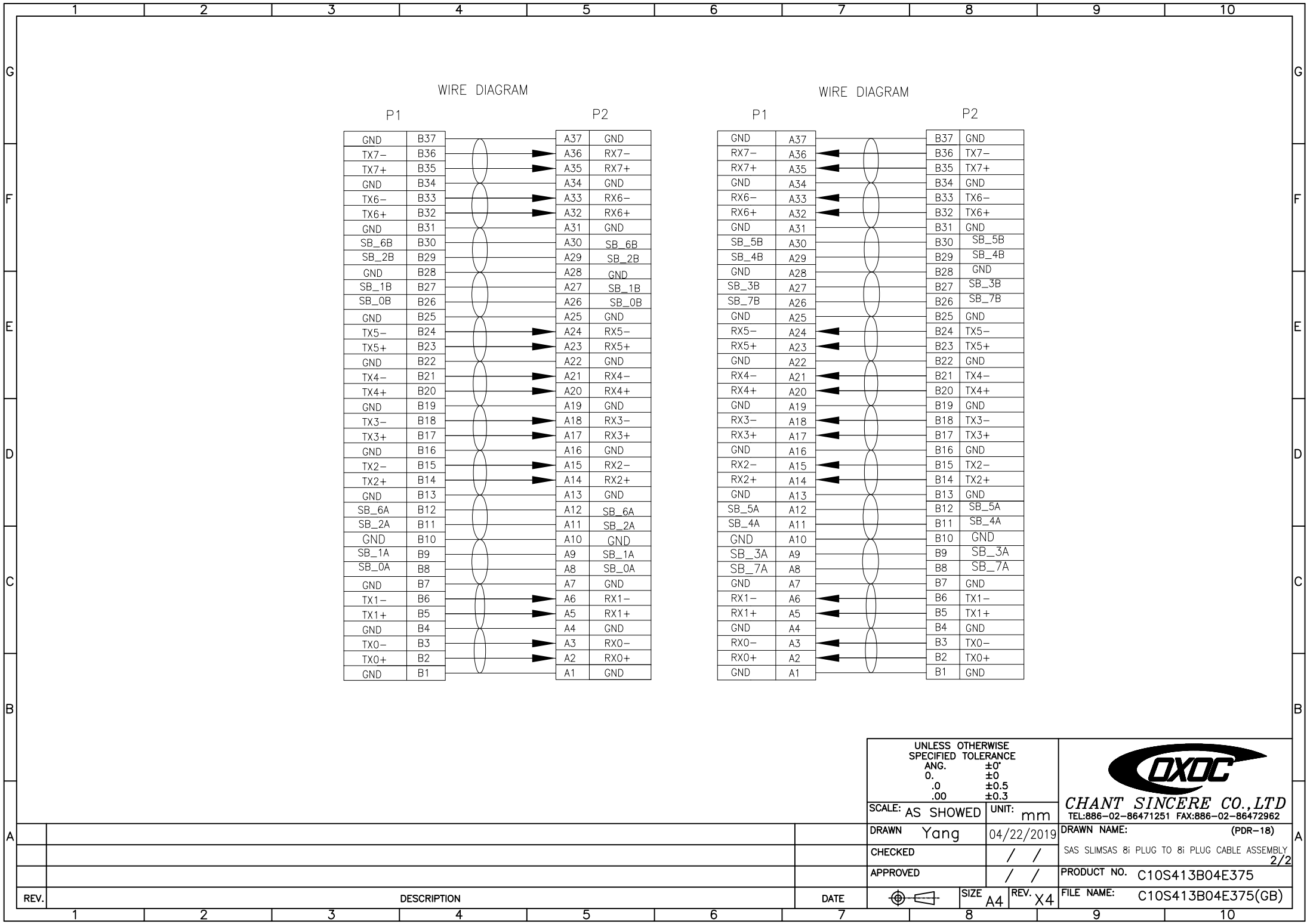
OXOC

CHANT SINCERE CO., LTD
 TEL:886-02-86471251 FAX:886-02-86472962

DRAWN NAME: (PDR-18)
 SAS SLIMSAS 8i PLUG TO 8i PLUG CABLE ASSEMBLY 1/2

PRODUCT NO. C10S413B04E375
 FILE NAME: C10S413B04E375(GB)

REV.	DESCRIPTION	DATE	SIZE	REV.	FILE NAME
1			A4	X4	C10S413B04E375(GB)



UNLESS OTHERWISE SPECIFIED TOLERANCE
 ANG. ±0°
 0. ±0
 .0 ±0.5
 .00 ±0.3

SCALE: AS SHOWN UNIT: mm

DRAWN Yang 04/22/2019

CHECKED / /

APPROVED / /

DATE SIZE A4 REV. X4



CHANT SINCERE CO., LTD
 TEL:886-02-86471251 FAX:886-02-86472962

DRAWN NAME: (PDR-18)

SAS SLIMSAS 8i PLUG TO 8i PLUG CABLE ASSEMBLY 2/2

PRODUCT NO. C10S413B04E375

FILE NAME: C10S413B04E375(GB)

REV.	DESCRIPTION	DATE
1		
2		
3		
4		
5		
6		
7		
8		
9		
10		