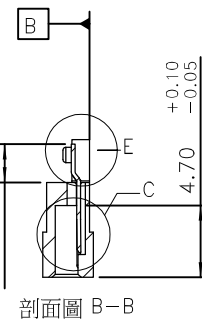
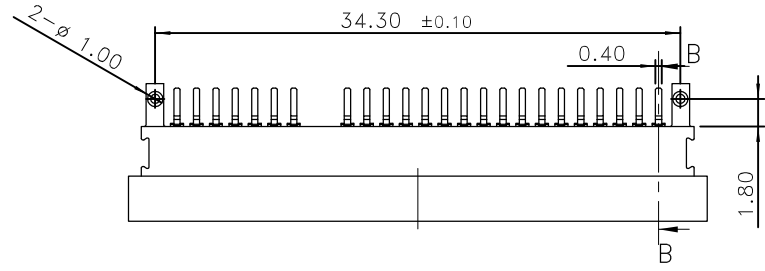
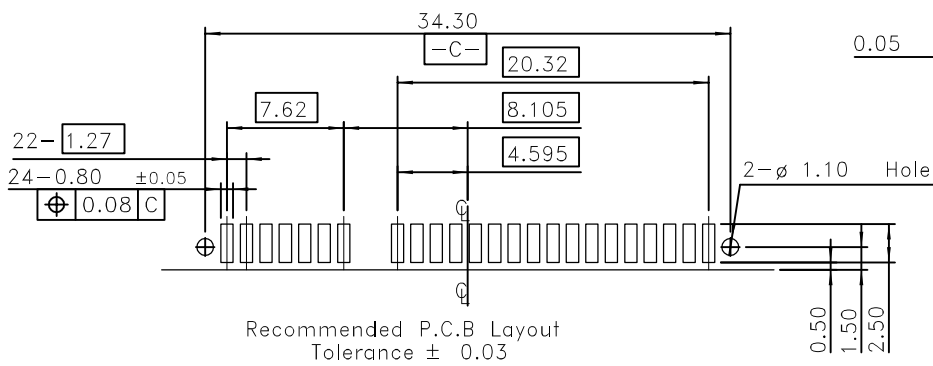
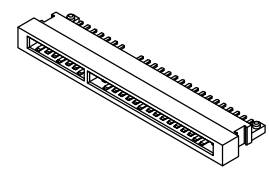
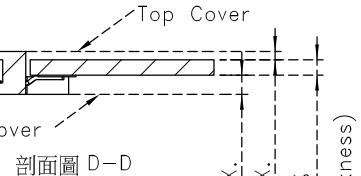
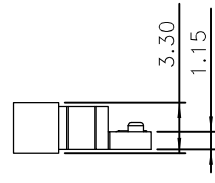
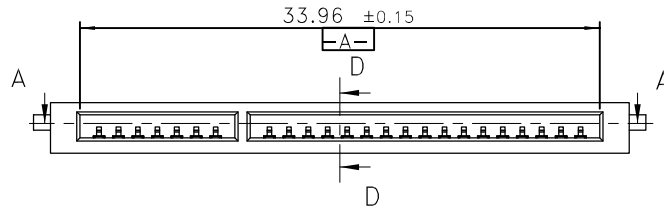


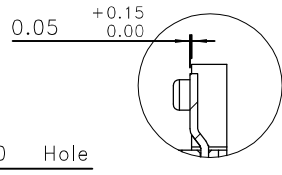
剖面圖 A-A



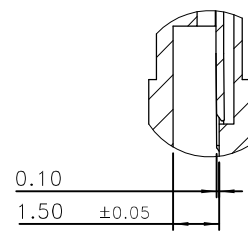
剖面圖 B-B



Recommended P.C.B Layout
Tolerance ± 0.03



細部放大圖 E



細部放大圖 C

SPECIFICATION
MATERIAL
 Insulator: Thermoplastic , rated UL94V-0
 Contacts: Copper Alloy
 Shell: Stainless
CONTACT PLATING
 Underplate: 50u"~100u" Nickel
 Contact area: 15~30u" Selective gold
 Solder tails area: 100u"~200u" Tin/Lead Free

Part no.

S 752D H 24 P X T S2 1 X 3
 1 2 3 4 5 6 7 8 9 10 11

- 1.S=SEMI FINISHED PRODUCT
- 2.SERIES NO. : 752
- 3.GREEN OPTION:
H=RoHS (Halogen Free-Matte)
- 4.CONTACT NUMBER:
24=24PIN
- 5.CONTACT TYPE:
F=FEMALE
- 6.CONTACT AREA PLATING:
C=15u" GOLD
- 7.SOLDER TAILS AREA PLATING:
T=100u"~200u" TIN
- 8.APPLY TYPE:
S2=S2 Type
- 9.Card Type:
1=3.30mm(Type I)
- 10.PACKING STYLE:
A=TRAY
- 11.INSULATOR COLOR:
3=Black

DIM #	PIN#
DIM I	0.5±0.1
DIM J	0.9±0.1
DIM K	1.6±0.1

UNLESS OTHERWISE SPECIFIED TOLERANCE	
ANG.	±5°
0.	±0.5
.0	±0.3
.00	±0.2



CHANT SINCERE CO.,LTD
 TEL:886-02-86471251 FAX:886-02-86472962

SCALE: AS SHOWN	UNIT: mm
DRAWN PEARL	05/31/2016
CHECKED	/ /
APPROVED	/ /

DRAWN NAME:
CFast Card Conn.
(PDR-12131)

PRODUCT NO. S752DH24FXTS21X3

FILE NAME: C-S752DH24FXTS21A3(GB)

REV.	DESCRIPTION	DATE