

SPECIFICATION

MATERIAL

Insulator: Thermoplastic, rated UL94V-0

Contacts: Copper Alloy

Shell: Steel

CONTACT PLATING

Underplate: 50u"~150u" Nickel

Contact area: 1u"~30u" Selective gold

Solder tails area: 100u"~200u" Matte Tin (Lead Free)

ELECTRICAL

Operation voltage: 40V AC Max.

Current rating: 0.5 A Min.

Contact resistance: Contact=30m Ω, Shell=50m Ω

Insulation resistance: 100 Mohms min @ 500 VDC

Mated: 10 Mohms min @ 150 VDC

Dielectric withstanding voltage: 500 VAC / minute

Temperature range: -20°C TO +85°C

Mating cycles: 10,000 insertions

Part no.

909 JH 20 FSTC4N5C C

1 2 3 4 5 6 7 8 9 10 11 12

1.SERIES NO.

909=Display Port

2.J=DIP+SMT

3.GREEN OPTION:

H=RoHS (Matte Tin)

(Halogen Free)

4.CONTACT NUMBER:

20=20 PINS

5.CONTACT TYPE:

F=FEMALE

6.CONTACT AREA PLATING:

S=1u" GOLD

7.SOLDER TAILS AREA PLATING:

T=100u"~200u" TIN(Lead Free)

8.APPLY TYPE:

C4=Mini Display Port

9.SHELL PLATING:

N=Nickel

10.5=Off-set 4.20mm (HTN)

11.PACKING STYLE:

C=TAPE REEL

12.INSULATOR COLOR:

3=Black

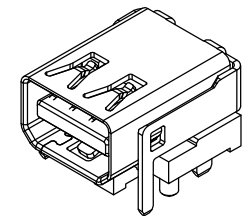
DATE CODE:

YY=Year YYWW

ex:2011=11

WW=Week code

ex:20 week=20



| | |
|--------------------------------------|--------|
| UNLESS OTHERWISE SPECIFIED TOLERANCE | |
| ANG. | ± 2° |
| .0 | ± 0.30 |
| .0 | ± 0.20 |
| .00 | ± 0.10 |

| | | | |
|--------|----------|-------|----|
| SCALE: | AS SHOWN | UNIT: | mm |
|--------|----------|-------|----|

| | | |
|-------|-----|-----------|
| DRAWN | 熊麗麗 | 09/18/12' |
|-------|-----|-----------|

| | |
|---------|-----|
| CHECKED | / / |
|---------|-----|

| | |
|----------|-----|
| APPROVED | / / |
|----------|-----|

| | | | |
|------|----|------|---|
| SIZE | A4 | REV. | C |
|------|----|------|---|



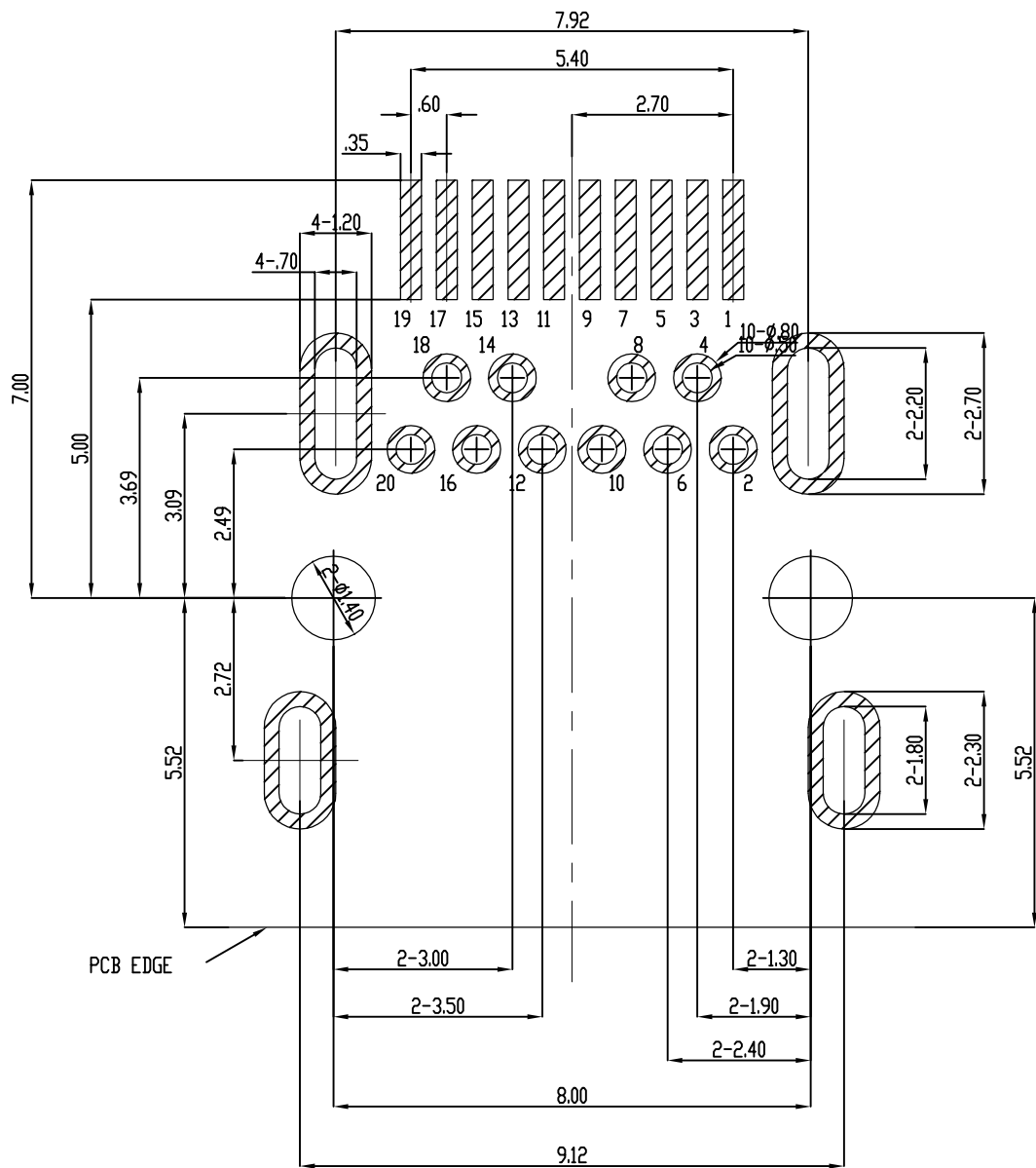
CHANT SINCERE CO.,LTD
TEL:886-02-86471251 FAX:886-02-86472962

DRAWN NAME:
MINI Display Port
Off-set 4.20mm 1/2

PRODUCT NO. 909JH20FSTC4N5CC

FILE NAME: C-909JH20FSTC4N5CC(GA)

| REV. | DESCRIPTION | DATE |
|------|-------------|------|
| 1 | | |
| 2 | | |
| 3 | | |
| 4 | | |
| 5 | | |
| 6 | | |
| 7 | | |
| 8 | | |
| 9 | | |
| 10 | | |



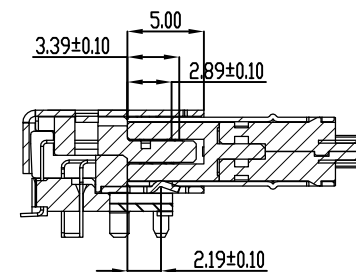
RECOMMENDED P.C.B. LAYOUT
TOLERANCES: $\pm 0.05\text{mm}$

SOURCE SIDE

| PIN NUMBER | PIN NAME |
|------------|-----------------|
| 1 | GND |
| 2 | Hot Plug Detect |
| 3 | ML_Lange0(p) |
| 4 | CONFIG 1 |
| 5 | ML_Lange0(n) |
| 6 | CONFIG 2 |
| 7 | GND |
| 8 | GND |
| 9 | ML_Lange1(p) |
| 10 | ML_Lange3(p) |
| 11 | ML_Lange1(n) |
| 12 | ML_Lange3(n) |
| 13 | GND |
| 14 | GND |
| 15 | ML_Lange2(p) |
| 16 | AUX_CH(p) |
| 17 | ML_Lange2(n) |
| 18 | AUX_CH(n) |
| 19 | GND |
| 20 | DP_PWR(PWR OUT) |

SINK SIDE

| PIN NUMBER | PIN NAME |
|------------|-----------------|
| 1 | GND |
| 2 | Hot Plug Detect |
| 3 | ML_Lange3(n) |
| 4 | CONFIG 1 |
| 5 | ML_Lange3(p) |
| 6 | CONFIG 2 |
| 7 | GND |
| 8 | GND |
| 9 | ML_Lange2(n) |
| 10 | ML_Lange0(n) |
| 11 | ML_Lange2(p) |
| 12 | ML_Lange0(p) |
| 13 | GND |
| 14 | GND |
| 15 | ML_Lange1(n) |
| 16 | AUX_CH(p) |
| 17 | ML_Lange1(p) |
| 18 | AUX_CH(n) |
| 19 | GND |
| 20 | DP_PWR(PWR OUT) |



Fully mated Mini DisplayPort Connector showing mating levels

| | | | |
|--------------------------------------|---------------|---|----------------------------------|
| UNLESS OTHERWISE SPECIFIED TOLERANCE | | | |
| ANG. | $\pm 5^\circ$ | | |
| 0. | ± 0.50 | CHANT SINCERE CO.,LTD TEL:886-02-86471251 FAX:886-02-86472962 | |
| .0 | ± 0.30 | SCALE: AS SHOWN | UNIT: mm |
| .00 | ± 0.20 | DRAWN 熊麗麗 | 09/18/12' |
| | | CHECKED | // |
| | | APPROVED | // |
| | | PRODUCT NO. | 909JH20STC4N5CC |
| REV. | | DATE | FILE NAME: C-909JH20STC4N5CC(GA) |

| REV. | DESCRIPTION | DATE | SIZE | REV. |
|------|-------------|------|------|------|
| 1 | | | A4 | C |