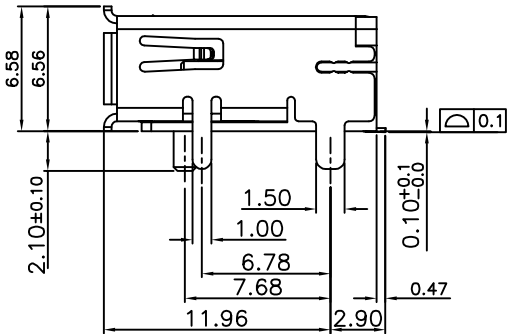
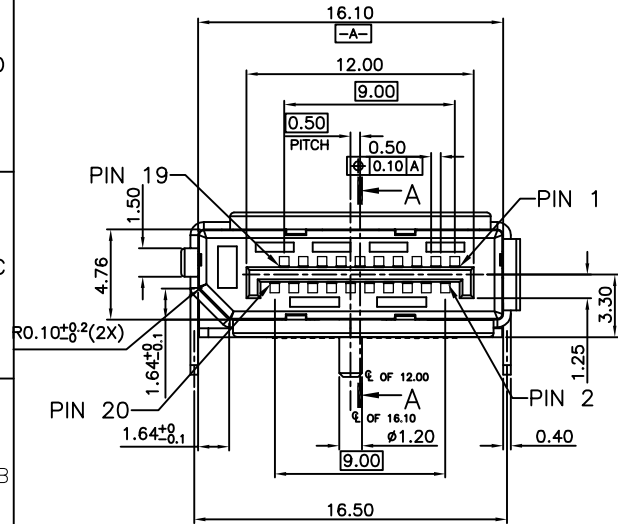


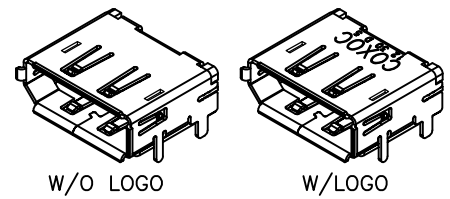
RECCOMENDER PCB LAYOUT(THICKNESS=1.6±0.15)



LOGO: COXOC  
 YEAR: EX.12=2012  
 WEEK CODE: 12 30 D 5  
 DAY CODE:  
 Sunday(星期日)= 1  
 Monday(星期一)= 2  
 Tuesday(星期二)= 3  
 Wednesday(星期三)= 4  
 Thursday(星期四)= 5  
 Friday(星期五)= 6  
 Saturday(星期六)= 7

**SPECIFICATION**  
**MATERIAL**  
 Insulator: Thermal Plastic, Rated UL94V-0  
 Contacts: Copper Alloy  
 Shell: Copper Alloy  
**CONTACT PLATING**  
 Underplate: 50u"~100u" Nickel  
 Contact area: 15u"~30u" Selective Gold  
 Solder tails area: 100u"~200u" Tin(Lead Free)  
**ELECTRICAL**  
 Operation voltage: 40V  
 Current rating: 0.5A min.  
 Contact resistancr: 30mohms  
 Insulation resistance: 100Mohms  
 Dielectric withstanding voltage: 500V AC/Minute  
 Temperature range: -20°C to +85°C  
 Mating cycles: 10,000 insertions  
 PART NO. 909 D F 20 E X I 01 N X X X  
 1 2 3 4 5 6 7 8 9 10 11 12

- 1.SERIES NO. 909=DISPLAY PORT
- 2.TYPE D=SMT
- 3.GREEN OPTION F=RoHS(Matte)
- 4.CONTACT NUMBER 20
- 5.CONTACT TYPE F=FEMALE
- 6.CONTACT AREA PLATING C=15u" GOLD
- 7.SOLDER AREA PLATING T=TIN
- 8.TYPE 01=STANDARD(板上型) (SHELL DIP)
- 9.SHELL PLATING N=NICKEL
- 10.MYLAR OPTION: D=W/O MYLAR,W/P EG (SHELL DIP,W/O FLANGE)
- 11.PACKING A=TRAY
- 12.INSULATOR COLOR 3=BLACK



UNLESS OTHERWISE SPECIFIED TOLERANCE		
ANG.	±2°	
0.	±0.50	<b>CHANT SINCERE CO.,LTD</b> TEL:886-02-86471251 FAX:886-02-86472962 DRAWN NAME: Display Port Receptacle PRODUCT NO. 909DF20FXT01NXXX FILE NAME: C-909DF20FXT01NDCX(GA)
0	±0.30	
.00	±0.20	
SCALE: AS SHOWN	UNIT: mm	
DRAWN: PEARL	03/31/2016	
CHECKED:	/ /	
APPROVED:	/ /	

REV.	DESCRIPTION	DATE	SIZE A4	REV. D
------	-------------	------	---------	--------