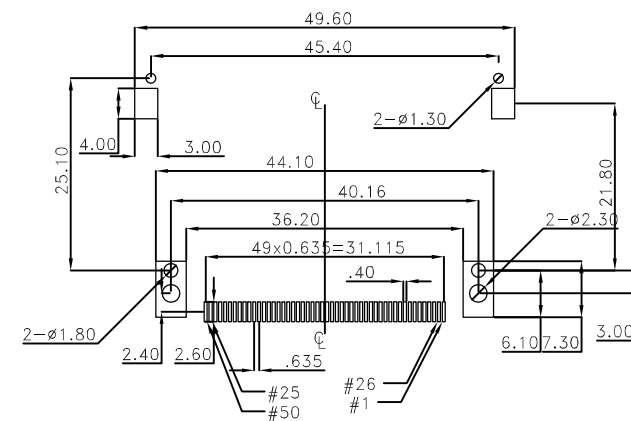
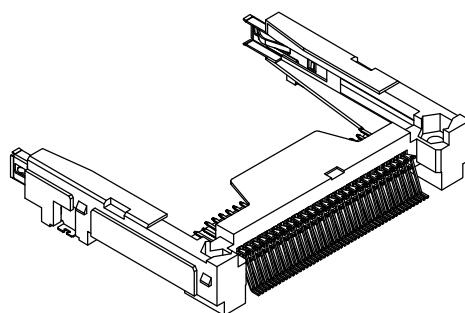
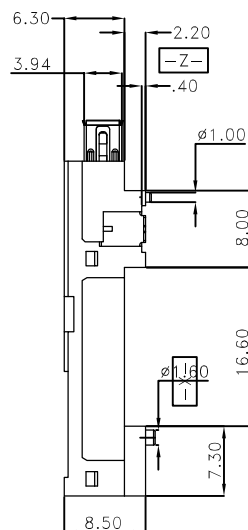
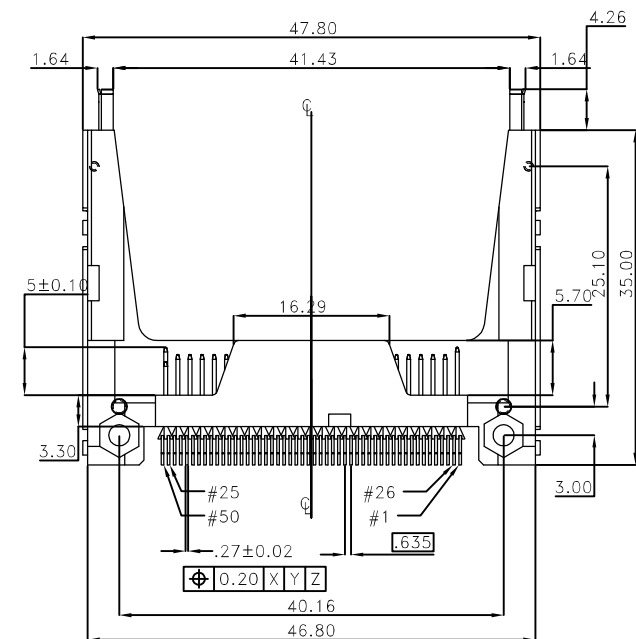


Pin Type	Interface Dim. L	Pin No.
POWER	5.00 mm	1,13,38,50
GENERAL	4.25 mm	All others pins
DETECT	3.50 mm	25,26

SPECIFICATION
 MATERIAL
 Insulator: Thermal Plastic UL94V-0
 Contacts: Copper alloy
 Mount Ear: Copper alloy
 CONTACT PLATING
 Underplate: 50u"~150u" Nickel
 Contact Area: 1u"~30u" Selective Gold
 Solder tails area: 100u" Min. Tin(Lead Free)
 Part no.

752 D F 50 M X T 12 1 5 A 1
 1 2 3 4 5 6 7 8 9 10 11 12

- | | |
|--|--|
| 1.SERIES NO.
752=C.F.A. | 7.SOLDER TAILS AREA PLATING
T=100u" Min. TIN(Lead Free) |
| 2.TYPE
D=SMT TYPE | 8.APPLY TYPE:
12=12 TYPE |
| 3.ENVIRONMENT PROTECTION
F=RoHS (Matte Tin) | 9.SHELL PLATING
1=扣點中心距23.0mm |
| 4.CONTACT NUMBER
50=50 PINS | 10.STAND OFF DISTANCE
5=2.2mm W/PICK PAD |
| 5.CONTACT TYPE
M=Male | 11.PACKING STYLE:
A=TRAY |
| 6.CONTACT PLATING
C=15u" Gold (Selective) | 12.INSULATOR C
1=White |



RECOMMENDED P.C.B. LAYOUT
 TOLERANCE : ±0.05

UNLESS OTHERWISE SPECIFIED TOLERANCE	
ANG.	±5°
0.	±0.5
.0	±0.3
.00	±0.2



CHANT SINCERE CO.,LTD

TEL:886-02-86471251 FAX:886-02-86472962

SCALE: AS SHOWN	UNIT: mm
DRAWN RITA	09/18/2014
CHECKED	
APPROVED	
DATE	

DRAWN NAME:	
CFA TYPE 2 (W/GROUNDING EXT. & PICK PAD) STANDARD TYPE (Standoff 2.2)	
PRODUCT NO.	752DF50MXT1215X1
FILE NAME:	C-752DF50MXT1215X1(GA)

REV.	DESCRIPTION	DATE	SIZE	REV. C
1			A4	
2				
3				
4				
5				
6				
7				
8				
9				
10				