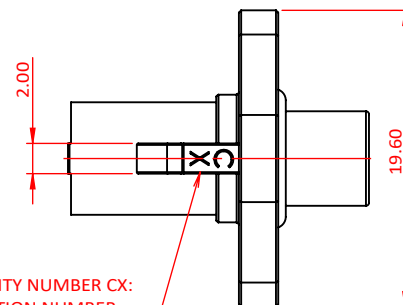
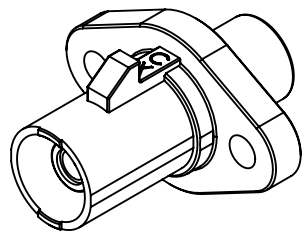


**SPECIFICATION**  
**MATERIALS AND FINISH:**  
 1. INSULATOR: PTFE, COLOR: WHITE  
 2. CONTACT: COPPER ALLOY  
 PLATING: 3u" GOLD OVER 50u"~150u" NICKEL  
 3. SPRING SHELL: COPPER ALLOY  
 PLATING: 50u"~150u" NICKEL  
 4. OUTER SHELL: ZINC ALLOY  
 PLATING: 120u"~240u" NICKEL OVER 600u"~800u" CU

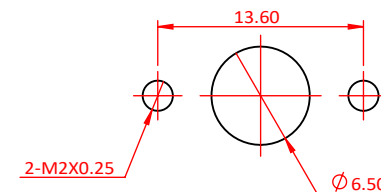
**ELECTRICAL:**  
 1. IMPEDANCE: 50Ω  
 2. INSULATOR RESISTANCE: 1000 MΩ MIN.(DC 500V.)  
 3. WITHSTANDING VOLTAGE: : AC 500 Vrms  
 4. CURRENT RATING: 3A(DC)  
 5. CONTACT RESISTANCE: 20 mΩ INITIAL (AFTER 40mΩ MAX.)

**MECHANICAL:**  
 1. DURABILITY: 25 CYCLES  
 2. OPERATING TEMPERATURE RANGE: -40°C TO +105°C  
 3. USCAR-17 COMPLIANT

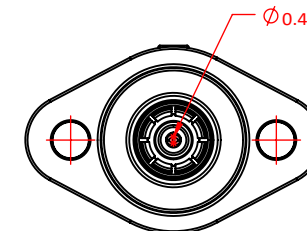
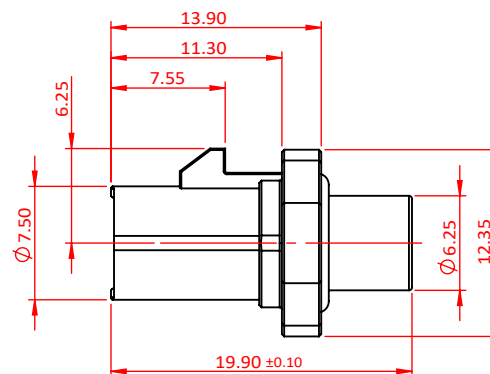
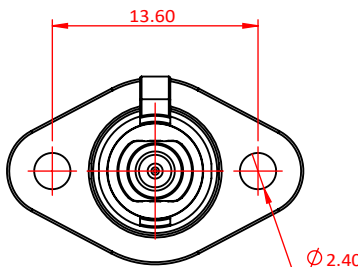
PACKING STYLE: TRAY



MODEL CAVITY NUMBER CX:  
 C:CORPORATION NUMBER  
 X:CAVITY INDEX(1&2)



RECOMMENDED PANEL THICKNESS: 2.00mm  
 TOLERANCES: 0.05mm



STANDARD		
A	F	Z

X=CODE			
NEW P/N	OLD P/N	GREEN OPTION	NOTE
7014102002X	N/A	RoHF	IP69K
7014102001X	S410DE01MRRC22AX	RoHS	IP69K

UNLESS OTHERWISE SPECIFIED TOLERANCE	SIP Crk Cpk	 CHANT SINCERE CO.,LTD
ANG. ±2° 0. ±0.30 .0 ±0.20 .00 ±0.10		
SCALE: AS SHOWN	UNIT: mm	

Zone	Revision	Description	Date	Drawn	Checked	Approved	Rev.	Part No.	Code	Customer
	D	ECN-2308051(TINA)NEW RoHF OPTION	22AUG2023	KEVIN_ZHENG	JERRY_CHOU	JERRY_CHOU	D		GC	
	C	ECN-2305026(ANDY)MODIFY SPEC	09MAY2023							
	B	ECN-2302021(ANDY)MODIFY P/N&ADD CODING MARKING	27DEC2022					7014102XXXX		

SIZE A4	SHEET 1/1	REV. D	TITLE: SMB-CM TO FAKRA ADAPTER & UN-MATED WATER-PROOF
---------	-----------	--------	---