

C B

SPECIFICATION

MATERIALS AND FINISH:

1. INSULATOR: PTFE, COLOR: WHITE
2. CONTACT: COPPER ALLOY
PLATING: 3u" GOLD OVER 50u"~150u" NICKEL
3. SPRING SHELL: COPPER ALLOY
PLATING: 50u"~150u" NICKEL
4. OUTER SHELL: ZINC ALLOY
PLATING: 120u"~240u" NICKEL OVER 600u"~800u" CU

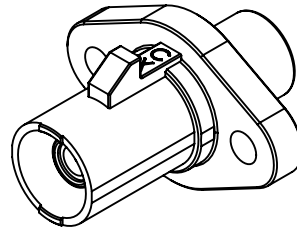
ELECTRICAL:

1. IMPEDANCE: 50Ω
2. INSULATOR RESISTANCE: 1000 MΩ MIN.(DC 500V.)
3. WITHSTANDING VOLTAGE: : AC 500 Vrms
4. CURRENT RATING: 3A(DC)
5. CONTACT RESISTANCE: 20 mΩ INITIAL (AFTER 40mΩ MAX.)

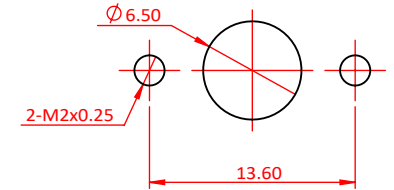
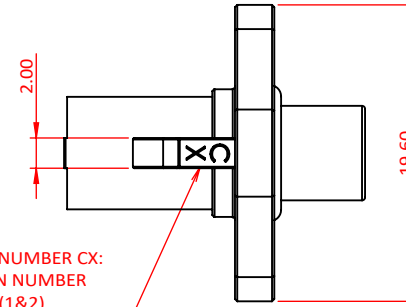
MECHANICAL:

1. DURABILITY: 25 CYCLES
2. OPERATING TEMPERATURE RANGE: -40°C TO +105°C
3. USCAR-17 COMPLIANT

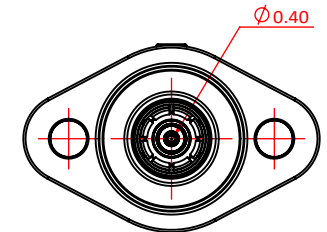
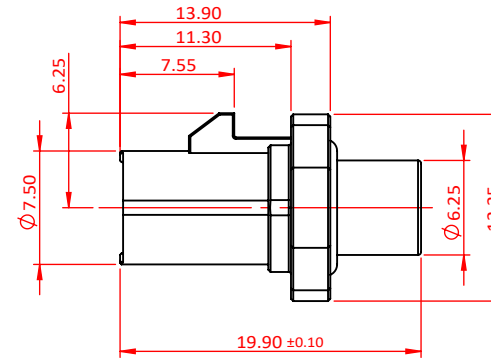
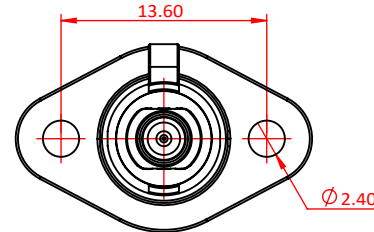
PACKING STYLE: TRAY



MODEL CAVITY NUMBER CX:
C:CORPORATION NUMBER
X:CAVITY INDEX(1&2)



RECOMMENDED PANEL THICKNESS: 2.0mm
TOLERANCES: 0.05mm



B

STANDARD		
A	F	Z

X=CODE

7014101001X	S410DE01MRRC12AX	SMB CM To FAKRA PLUG Adapter X CODE
NEW P/N	OLD P/N	NOTE
UNLESS OTHERWISE SPECIFIED TOLERANCE ANG. ±5° 0. ±0.50 .0 ±0.30 .00 ±0.20	SIP Crk Cpk	 CHANT SINCERE CO.,LTD TEL:+886-2-8647-1251 WWW.COXOC.COM.TW
SCALE: 1:1	UNIT: mm	
DRAWN: SUNNY_LIU	10 05 2023	TITLE: SMB-CM TO FAKRA ADAPTER
CHECKED: ANDY_GAU	19 05 2023	PART NO. 7014101001X
APPROVED: JERRY_CHOU	09 06 2023	CODE: GC CUSTOMER:
	SIZE A4 SHEET 1/1	REV. C

F1	C	ECN-2305027(ANDY)MODIFY SPEC	10OCT2023
C1, F1	B	ECN-2302007(ANDY)CHANGE NUMBER, ADD CODING MARKING	16JAN2023
	A	ECN-2207054(ANDY)X6 CHANGE TO A	21JUL2022
Zone	Revision	Description	Date
1	2	3	4
5	6	7	8
9	10		