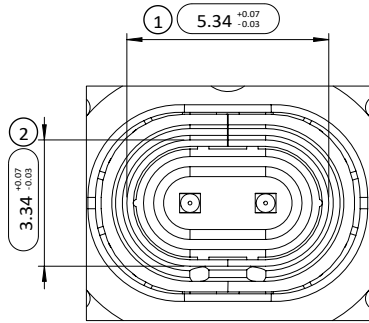
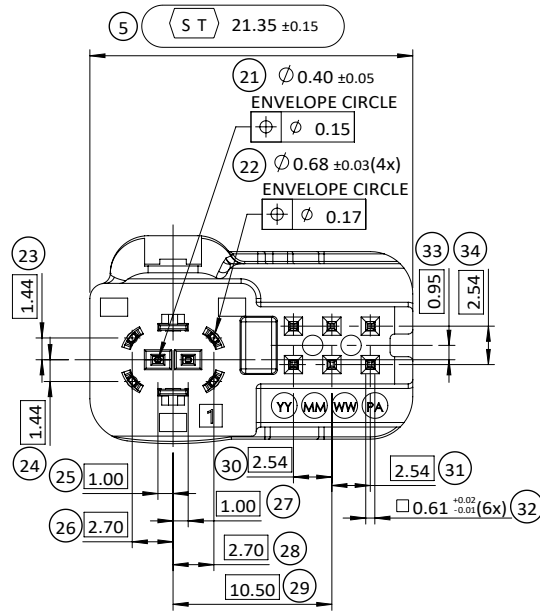
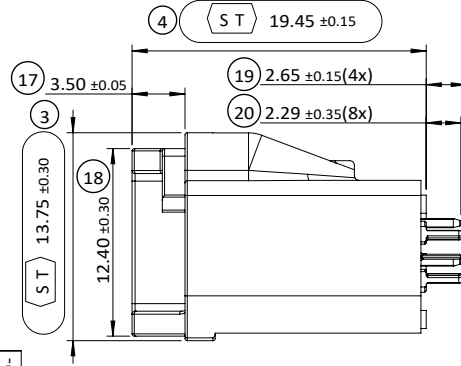
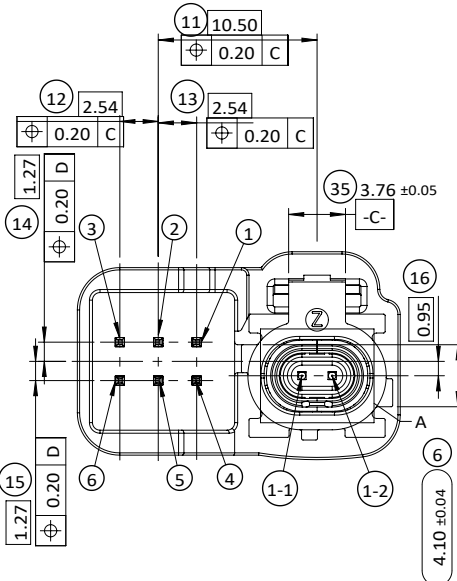
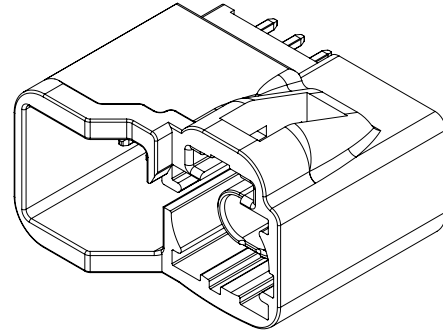


RoHS  
compliant



DETAIL A  
SCALE 5 : 1



**SPECIFICATION**

**MATERIAL AND FINISH:**

1. CODING HOUSING: PA, COLOR SEE PAGE 3
2. CAP: LCP, BLACK
3. CONTACT: COPPER ALLOY  
PLATING CONTACT AREA: 6u" AU OVER 80~160u" NI  
SOLDER TAIL AREA: 80~160u" SN (MATTE) OVER 80~160u" NI
4. POWER PINS: COPPER ALLOY  
PLATING: 40~160u" SN(MATTE) OVER 80~200u" NI
5. OUTER CONTACT(SHEET): PHOSPHOR BRONZE  
PLATING: 80~160u" SN(MATTE) OVER 80~160u" NI

**ELECTRICAL CHARACTERISTIC:**

1. CHARACTERISTIC IMPEDANCE: 100 Ω
2. FREQUENCY RANGE: DC TO 10.0 GHz
3. RETURN LOSS: ≥ 30 dB, 0.01 GHz to 3 GHz  
≥ 25 dB, 3 GHz to 6 GHz  
≥ 20 dB, 6 GHz to 10 GHz
4. INSULATION RESISTANCE: ≥100 MΩ MIN.
5. SIGNAL CONTACT RESISTANCE: ≤10 mΩ
6. OUTER CONTACT RESISTANCE: ≤7.5 mΩ
7. WORKING VOLTAGE: ≤60V DC
8. POWER CURRENT: ≤1.5A DC
9. POWER CURRENT MQS PINS: ≤5A DC

**MECHANICAL CHARACTERISTIC:**

1. DURABILITY: ≥20 CYCLES
2. ENGAGEMENT FORCE EACH HCMTD: ≤15 N
3. ENGAGEMENT FORCE EACH MQS: ≤5 N
4. RETENTION FORCE LATCH: ≥110 N
5. CODING EFFICIENCY: ≥80

**ENVIRONMENT:**

1. OPERATING TEMPERATURE RANGE: -40°C TO +105°C

**PACKING:**

1. TAPE REEL

X=CODING, SEE PAGE 3/3

UNLESS OTHERWISE SPECIFIED TOLERANCE ANG. +5° 0. +0.50 .0 +0.30 .00 +0.20	SIP Crmk Cpk	
DRAWN: CANDY_CHEN	03 Feb 2026	PART NO. 5440602001X
CHECKED: JERRY_CHOU	05 Feb 2026	
APPROVED: JERRY_CHOU	05 Feb 2026	REV. A
DATE: 03FEB2026	DESCRIPTION: ECN-2602008(JIN)X4 CHANGE TO A	CODE: GC
SIZE: A4	SHEET: 1/3	CUSTOMER:

ZONE	REVISION	DESCRIPTION	DATE
1	A	ECN-2602008(JIN)X4 CHANGE TO A	03FEB2026



RoHS  
compliant



A	B	C	D	E	F	G
JET BLACK SIMILAR RAL 9005	PURE WHITE SIMILAR RAL 9010	LIGHT BLUE SIMILAR RAL 5012	CLARET VIOLET SIMILAR RAL 4004	MAY GREEN SIMILAR RAL 6017	NUT BROWN SIMILAR RAL 8011	PLATINUM GREY SIMILAR RAL 7036
H	J	K	L	M	O	Z
LIGHT PINK SIMILAR RAL 3015	BEIGE SIMILAR RAL 1001	CURRY SIMILAR RAL 1027	YELLOW GREEN SIMILAR RAL 6018	PASTEL ORANGE SIMILAR RAL 2003	LIGHT GREEN SIMILAR RAL 6027	WATER BLUE SIMILAR RAL 5021

UNLESS OTHERWISE SPECIFIED TOLERANCE ANG. +5° 0. +0.50 .0 +0.30 .00 ±0.20	SIP Crmk Cpk	 <b>CHANT SINCERE CO.,LTD</b>
SCALE: 2:1	UNIT: mm	
DRAWN: CANDY_CHEN	03 Feb 2026	TITLE: PDR-24004 CAR ETHERNET 1X1 + MQS 6P (VE)
CHECKED: JERRY_CHOU	05 Feb 2026	PART NO. 5440602001X
APPROVED: JERRY_CHOU	05 Feb 2026	CODE: GC
	SIZE A4	SHEET 3/3
	REV. A	CUSTOMER:

	A	ECN-2602008(JIN)X4 CHANGE TO A	03FEB2026
ZONE	REVISION	DESCRIPTION	DATE
1	2	3	4

1 2 3 4 5 6 7 8 9 10

G

F

E

D

C

B

A