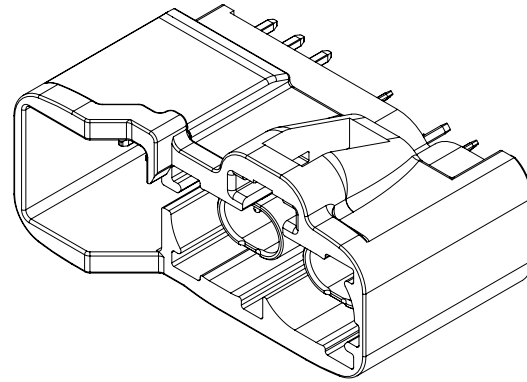


DETAIL A  
SCALE 5 : 1



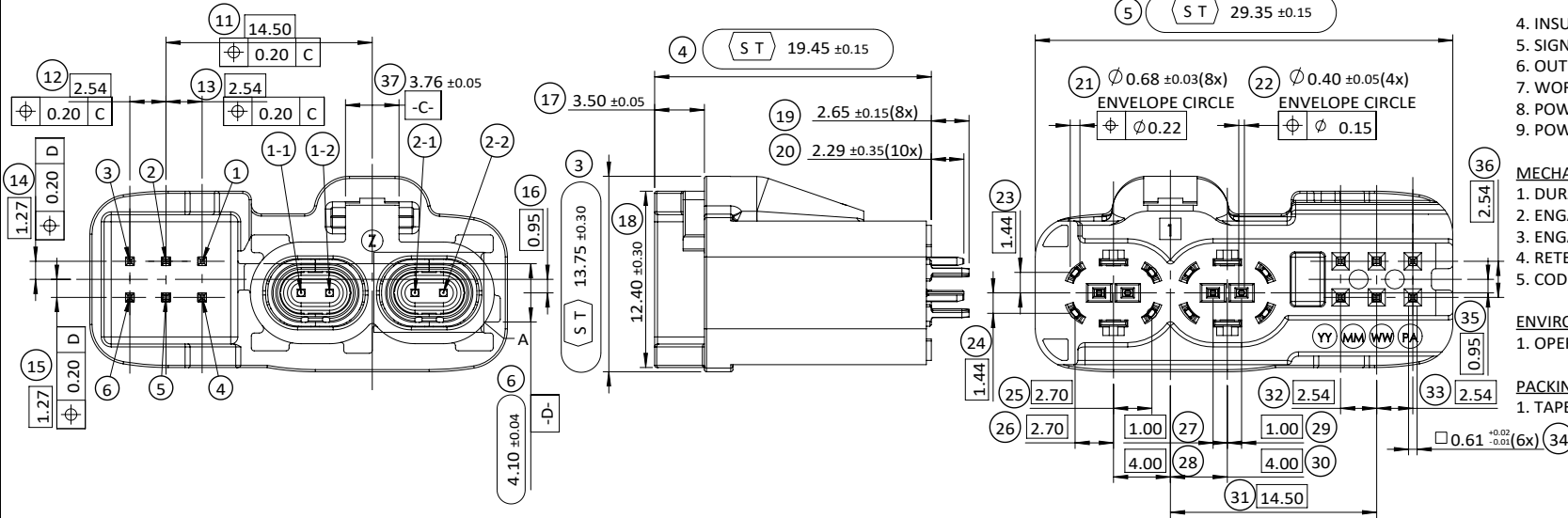
- SPECIFICATION**  
**MATERIAL AND FINISH:**
- CODING HOUSING: PA, COLOR SEE PAGE 3
  - CAP: LCP, BLACK
  - CONTACT: COPPER ALLOY  
PLATING CONTACT AREA: 6u" AU OVER 80~160u" NI  
SOLDER TAIL AREA: 80~160u" SN (MATTE) OVER 80~160u" NI
  - POWER PINS: COPPER ALLOY  
PLATING: 40~160u" SN(MATTE) OVER 80~200u" NI
  - OUTER CONTACT(SHEET): PHOSPHOR BRONZE  
PLATING: 80~160u" SN(MATTE) OVER 80~160u" NI

- ELECTRICAL CHARACTERISTIC:**
- CHARACTERISTIC IMPEDANCE: 100 Ω
  - FREQUENCY RANGE: DC TO 10.0 GHz
  - Return loss: ≥ 30 dB, 0.01 GHz to 3 GHz  
≥ 25 dB, 3 GHz to 6 GHz  
≥ 20 dB, 6 GHz to 10 GHz
  - INSULATOR RESISTANCE: ≥100 MΩ MIN.
  - SIGNAL CONTACT RESISTANCE: ≤10 mΩ
  - OUTER CONTACT RESISTANCE: ≤7.5 mΩ
  - WORKING VOLTAGE: ≤60V DC
  - POWER CURRENT: ≤1.5A DC
  - POWER CURRENT MQS PINS: ≤5A DC

- MECHANICAL CHARACTERISTIC:**
- DURABILITY: ≥20 CYCLES
  - ENGAGEMENT FORCE EACH HCMTD: ≤25 N
  - ENGAGEMENT FORCE EACH MQS: ≤5 N
  - RETENTION FORCE LATCH: ≥110 N
  - CODING EFFICIENCY: ≥120 N

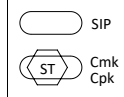
- ENVIRONMENT:**
- OPERATING TEMPERATURE RANGE: -40°C TO +105°C

- PACKING STYLE:**
- TAPE REEL



X=CODING, SEE PAGE 3/3

UNLESS OTHERWISE SPECIFIED TOLERANCE	ANG.	+5°
	0.	+0.50
	.0	+0.30
	.00	+0.20
	0.61 ±0.02/-0.01 (6x)	(34)



CHANT SINCERE CO.,LTD

SCALE: 2:1	UNIT: mm
DRAWN: CANDY_CHEN	03 Feb 2026
CHECKED: JERRY_CHOU	05 Feb 2026
APPROVED: JERRY_CHOU	05 Feb 2026

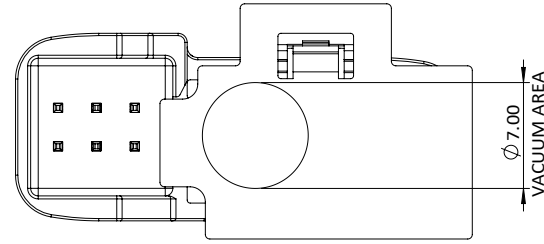
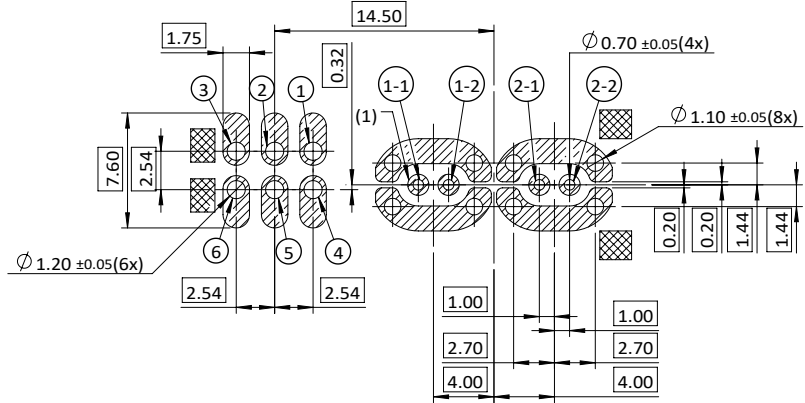
TITLE: PDR-24005  
CAR ETHERNET 1x2 + MQS 6P (VE)

PART NO. 5440601001X

ZONE	REVISION	DESCRIPTION	DATE
1	A	ECN-2602003(JIN)X4 CHANGE TO A	03FEB2026

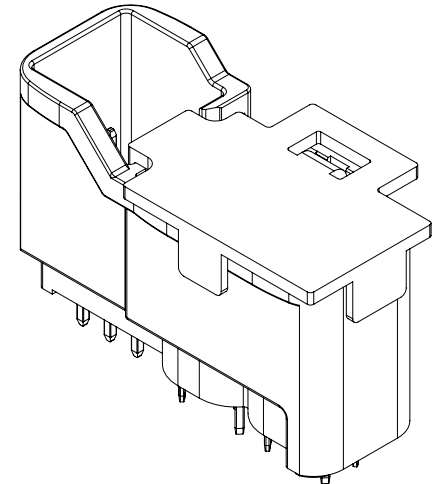
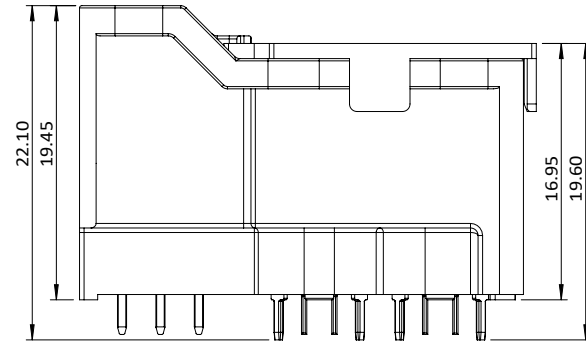
REV. A	CODE: GC	CUSTOMER:
--------	----------	-----------

RoHS  
compliant



THE STATED DIMENSIONS ARE ONLY RECOMMENDATIONS.  
THIS GIVEN LAYOUT IS NOT OPTIMISED TO FIT ALL OF THE POSSIBLE BOARD CONFIGURATIONS REGARDING RF-PERFORMANCE, IT REPRESENTS A RECOMMENDATION FOR OPTIMAL PLACEMENT OF THE CONNECTOR.  
IN ORDER TO GUARANTEE OPTIMUM HIGH FREQUENCY PROPERTIES OF THE CONNECTOR, AN RF-ANALYSIS OF THE CONNECTOR TO BOARD TRANSITION IS RECOMMENDED.

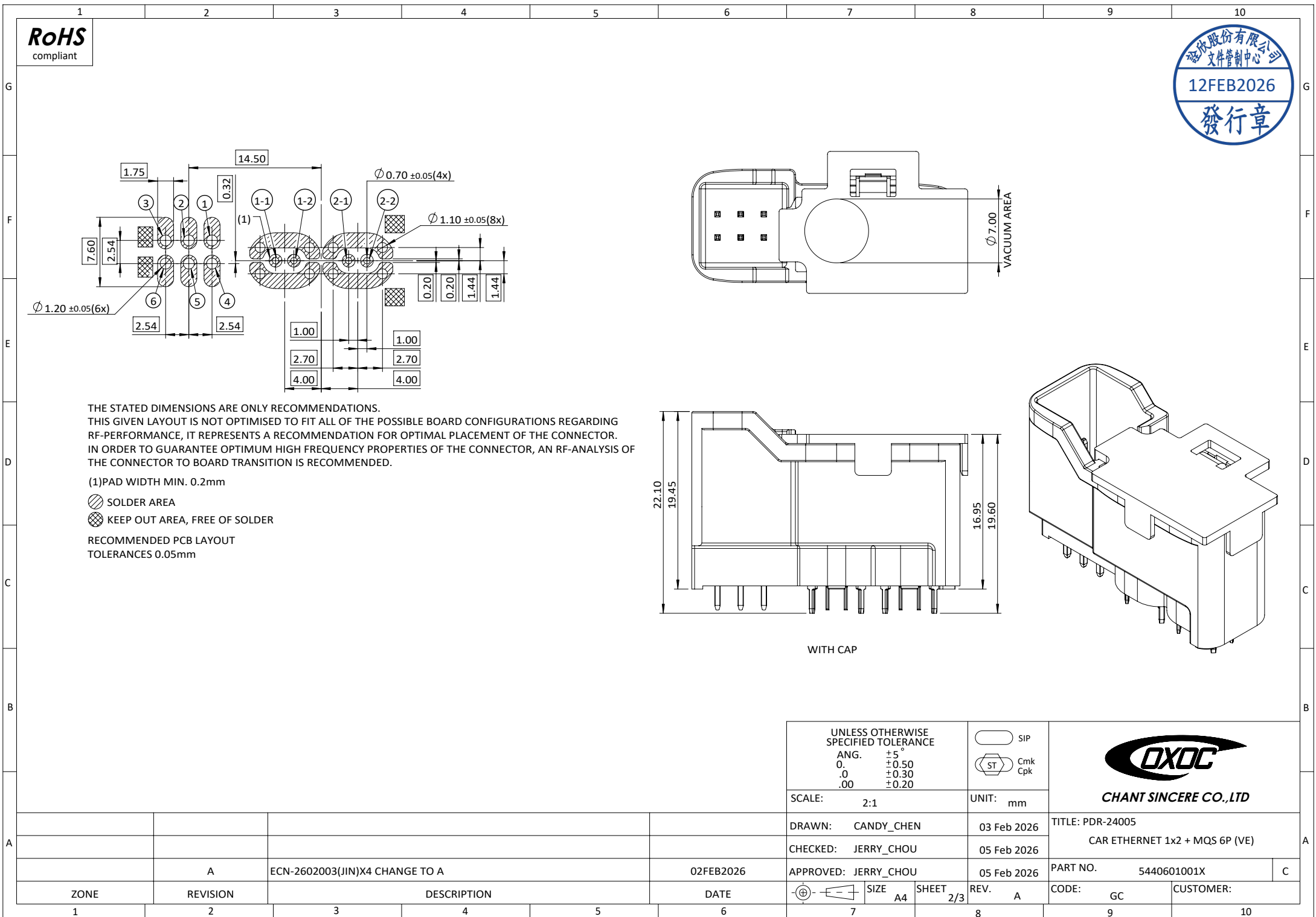
- (1) PAD WIDTH MIN. 0.2mm
  - SOLDER AREA
  - KEEP OUT AREA, FREE OF SOLDER
- RECOMMENDED PCB LAYOUT  
TOLERANCES 0.05mm



WITH CAP

UNLESS OTHERWISE SPECIFIED TOLERANCE		SIP	 <b>CHANT SINCERE CO.,LTD</b>
ANG.	+5°	Crmk Cpk	
0.	+0.50		
.0	+0.30		
.00	+0.20		
SCALE:	2:1	UNIT:	mm
DRAWN:	CANDY_CHEN	03 Feb 2026	TITLE: PDR-24005
CHECKED:	JERRY_CHOU	05 Feb 2026	CAR ETHERNET 1x2 + MQS 6P (VE)
APPROVED:	JERRY_CHOU	05 Feb 2026	PART NO. 5440601001X
	SIZE A4	SHEET 2/3	REV. A
			CODE: GC
			CUSTOMER:

	A	ECN-2602003(JIN)X4 CHANGE TO A	02FEB2026	
ZONE	REVISION	DESCRIPTION	DATE	
1	2	3	4	5

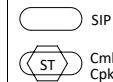


RoHS  
compliant



A	B	C	D	E	F	G
JET BLACK SIMILAR RAL 9005	PURE WHITE SIMILAR RAL 9010	LIGHT BLUE SIMILAR RAL 5012	CLARET VIOLET SIMILAR RAL 4004	MAY GREEN SIMILAR RAL 6017	NUT BROWN SIMILAR RAL 8011	PLATINUM GREY SIMILAR RAL 7036
H	J	K	L	M	O	Z
LIGHT PINK SIMILAR RAL 3015	BEIGE SIMILAR RAL 1001	CURRY SIMILAR RAL 1027	YELLOW GREEN SIMILAR RAL 6018	PASTEL ORANGE SIMILAR RAL 2003	LIGHT GREEN SIMILAR RAL 6027	WATER BLUE SIMILAR RAL 5021

UNLESS OTHERWISE SPECIFIED TOLERANCE	
ANG.	+5°
0.	+0.50
.0	+0.30
.00	+0.20



CHANT SINCERE CO.,LTD

SCALE: 2:1	UNIT: mm
DRAWN: CANDY_CHEN	03 Feb 2026
CHECKED: JERRY_CHOU	05 Feb 2026
APPROVED: JERRY_CHOU	05 Feb 2026

TITLE: PDR-24005  
CAR ETHERNET 1x2 + MQS 6P (VE)

PART NO. 5440601001X

ZONE	REVISION	DESCRIPTION	DATE
1	2	3	4
	A	ECN-2602003(JIN)X4 CHANGE TO A	02FEB2026

	SIZE A4	SHEET 3/3	REV. A	CODE: GC	CUSTOMER:
7	8	9	10		