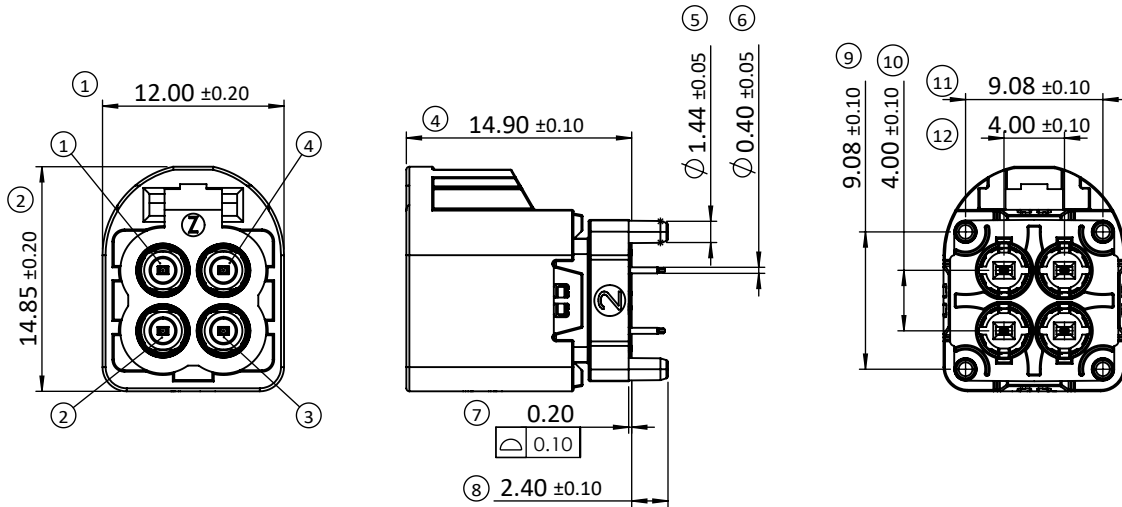
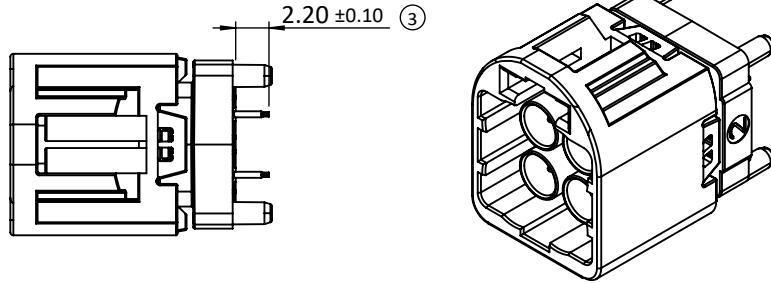


RoHS
compliant



SPECIFICATION

MATERIAL AND FINISH:

1. CODING HOUSING: PA
2. CONTACT: COPPER ALLOY
PLATING TAIL AREA: 6u" AU OVER 80~160u" NI
SOLDER TAIL AREA: 80~160u" SN (MATTE) OVER 40~160u" NI
3. CONTACT CYLINDER: COPPER ALLOY
PLATING AREA: 40~120u" SN(MATTE) OVER 40~120u" NI
4. OUTER CONTACT(PCB): ZAMAK
PLATING AREA: 120~240u" SN(MATTE) OVER 120~240u" NI
OVER 600~800u" CU
5. INNER HOUSING: HIGT TEMPERATURE PLASTIC, BLACK

ELECTRICAL CHARACTERISTIC:

1. CHARACTERISTIC IMPEDANCE: 50 Ω
2. FREQUENCY RANGE: DC TO 9.0 GHz
3. INSULATOR RESISTANCE: ≥1000 MΩ MIN.
4. WITHSTANDING VOLTAGE: AC 800Vrms MIN. 60s
5. VOLTAGE RATING: AC 335Vrms
6. CURRENT RATING: 1.0 A MAX.
7. CENTER CONTACT RESISTANCE: ≤10 mΩ
8. OUTER CONTACT RESISTANCE: ≤5 mΩ

MECHANICAL CHARACTERISTIC:

1. DURABILITY: ≥25 CYCLES
2. ENGAGEMENT FORCE: ≤45 N
3. RETENTION FORCE LATCH: ≥110 N
4. MISMATING ORIENTATION EFFECTIVENESS: ≥150 N $\triangle B$

ENVIRONMENT:

1. OPERATING TEMPERATURE RANGE: -40°C TO +105°C

PACKING:

1. TAPE REEL

NOTE:

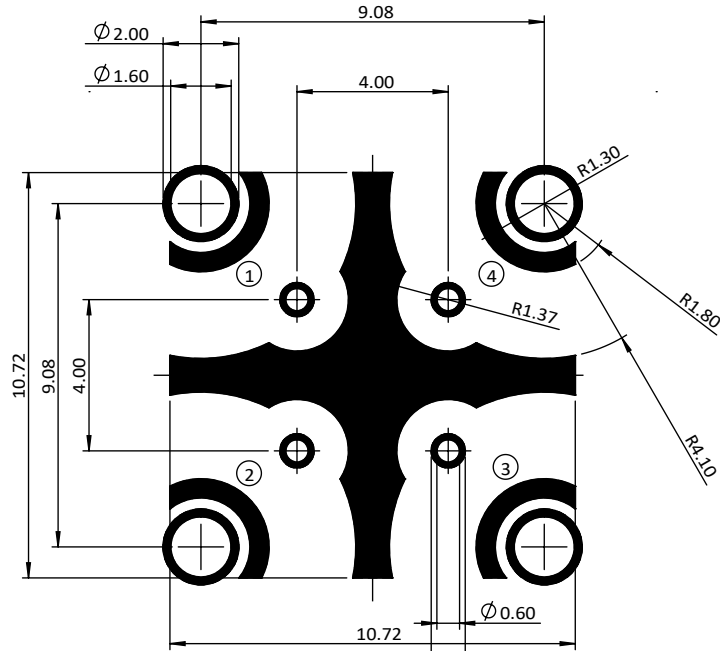
ALL MATERIALS MUST BE USCAR-2, USCAR-17 ;
SUPPORTING DOCUMENTATION MUST BE MADE AVAILABLE ON REQUEST

X=CODING, SEE PAGE 3/3

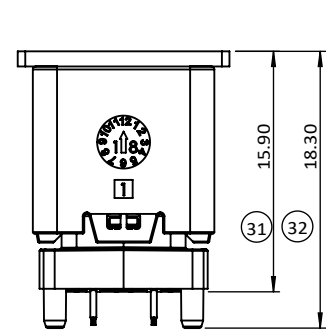
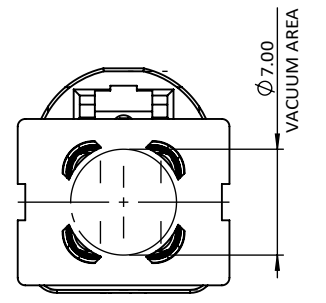
1	5420201001X	410AF04C6TB8T1CX	
ITEM	NEW P/N	OLD P/N	NOTE
	UNLESS OTHERWISE SPECIFIED TOLERANCE	SIP Cmk Cpk	 CHANT SINCERE CO.,LTD
SCALE:	2:1	UNIT: mm	
DRAWN:	RITA_CHANG	04 Jul 2025	TITLE: PDR-22032 MINI FAKRA AM PLUG-2X2(VE)
CHECKED:	JERRY_CHOU	04 Jul 2025	
APPROVED:	MARK_YEN	04 Jul 2025	PART NO. 5420201001X
	SIZE A4	SHEET 1/3	REV. B
			CODE: GC
			CUSTOMER:

D9, E7	B	ECN-2507015(CHRIS_HUANG)	
	A	ECN-2407095(JERRY)X4 CHANGE TO A	31JUL2024
ZONE	REVISION	DESCRIPTION	DATE
1	2	3	4

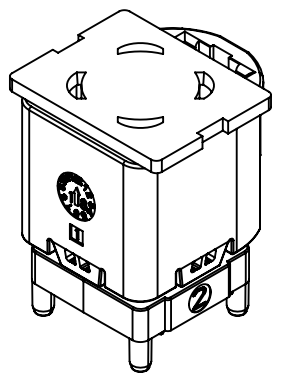
RoHS
compliant



SCALE 5:1
RECOMMENDED PCB LAYOUT
TOLERANCES ±0.05mm



WITH CAP



The stated dimensions are only recommendations.
A wide variety of transmissionline topologies and pcb-parameters like permittivity, substrate thickness, and board-stackup are applied by customers. These parameters have a strong impact on the high frequency performance of the mounted connector.
Please note, that the given layout is not optimised to fit all of the possible board configurations regarding RF-performance, it represents a recommendation for optimal solderability of the connector.
In order to guarantee optimal high frequency properties of the connector, an RF-analysis of the connector to board transition is recommended.

UNLESS OTHERWISE SPECIFIED TOLERANCE		SIP
ANG.	+5°	Cmk Cpk
0.	+0.50	
.0	+0.30	
.00	+0.20	
SCALE:	2:1	UNIT: mm
DRAWN:	RITA_CHANG	04 Jul 2025
CHECKED:	JERRY_CHOU	04 Jul 2025
APPROVED:	MARK_YEN	04 Jul 2025
	SIZE A4	SHEET 2/3

CHANT SINCERE CO.,LTD	
TITLE: PDR-22032	
MINI FAKRA AM PLUG-2X2(VE)	
PART NO.	5420201001X
CODE:	GC
CUSTOMER:	

	B	ECN-2507015(CHRIS_HUANG)SEE PAGE 1/3	04JUL2025
	A	ECN-2407095(JERRY)X4 CHANGE TO A	31JUL2024
ZONE	REVISION	DESCRIPTION	DATE

RoHS
compliant



A	B	C	D	E	F	G	Z
JET BLACK SIMILAR RAL 9005	PURE WHITE SIMILAR RAL 9010	LIGHT BLUE SIMILAR RAL 5012	CLARET VIOLET SIMILAR RAL 4004	MAY GREEN SIMILAR RAL 6017	NUT BROWN SIMILAR RAL 8011	GERY SIMILAR RAL 7036	WATER BLUE SIMILAR RAL 5021

UNLESS OTHERWISE SPECIFIED TOLERANCE		SIP Cmk Cpk	 CHANT SINCERE CO.,LTD
ANG.	±5°		
0.	±0.50		
.0	±0.30		
.00	±0.20		
SCALE:	2:1	UNIT:	mm
DRAWN:	RITA_CHANG	04 Jul 2025	TITLE: PDR-22032
CHECKED:	JERRY_CHOW	04 Jul 2025	MINI FAKRA AM PLUG-2X2(VE)
APPROVED:	MARK_YEN	04 Jul 2025	PART NO. 5420201001X
	SIZE A4	SHEET 3/3	REV. B
			CODE: GC
			CUSTOMER:

ZONE	REVISION	DESCRIPTION	DATE
	B	ECN-2507015(CHRIS_HUANG)SEE PAGE 1/3	04JUL2025
	A	ECN-2407095(JERRY)X4 CHANGE TO A	31JUL2024