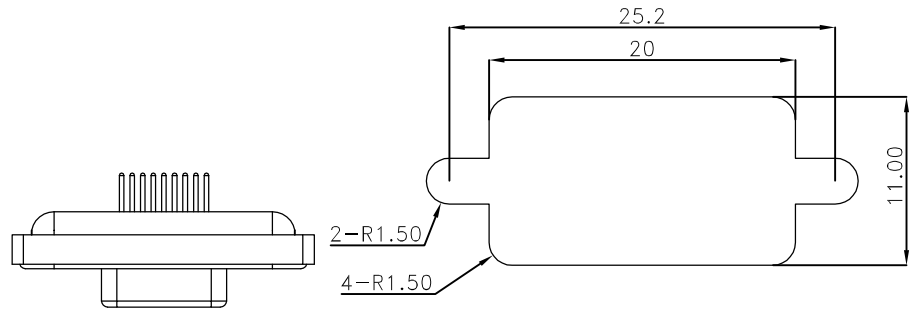


SPECIFICATION
 MATERIAL
 Insulator: Thermoplastic
 Contacts: Copper Alloy
 Shell: Steel
 O-ring: Silicone
 Sealant: Epoxy-Resin
 Rivet: Copper Alloy

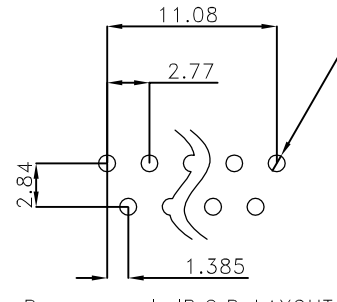
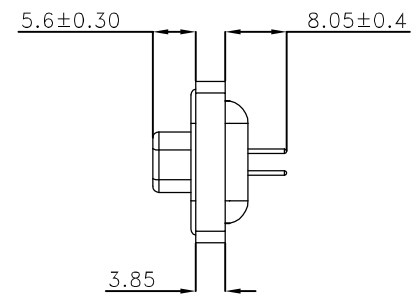
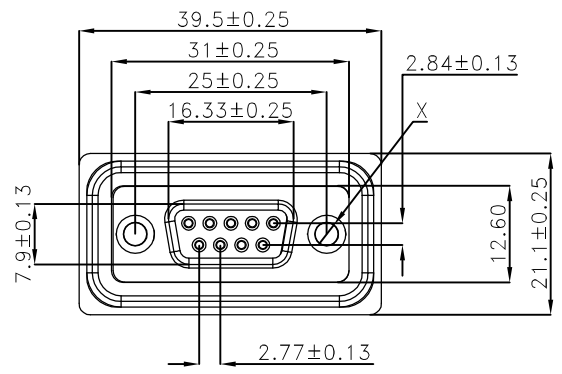
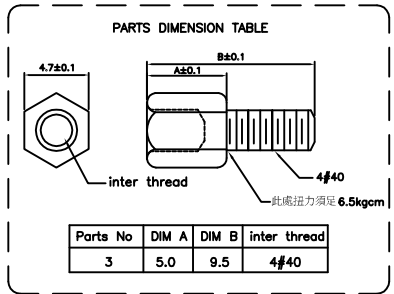
CONTACT PLATING
 Underplate :50u"~150u" Nickel
 Contact Area :1u"~30u" Selective Gold
 Rivet :50u"~100u" Nickel
 ELECTRICAL
 Operation Voltage :250 VAC Max
 Current Rating :3 Amps Max
 Contact Resistance :15 Mohms Min 500 VDA
 Dielectric Withstanding Voltage 1000 VAC/Minute
 Temperature Range :-55°C TO +105°C
 Degree of Protection :IP67(IEC 60529)
 PART NO.

249 A E XX F S S A3 N X A 3
 1 2 3 4 5 6 7 8 9 10 11 12

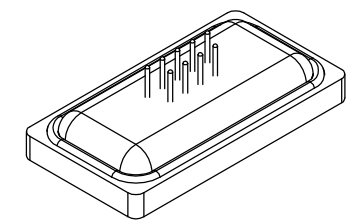
- 1.SERIES NO. ALL-01
- 2.TYPE NO. 0.0
- 3.GREEN OPTION: A=Standard E=RoHS (Bright)
- 4.CONTACT NUMBER: 09 15 25 37
- 5.CONTACT TYPE: F=Female
- 6.PLATED ON THE CONTACT SIDE: S=Gold Flash
- 7.PLATED ON THE SOLDERING SIDE: S=Gold Flash
- 8.TYPE: A3=203A
- 9.SHELL PLATING: N=Nickel Plated
- 10.PROCESS OPTION△ DIM FOR "X"
- 11.PACKING: 2=Fixed Hex-Rivet 4.5*4.9(4#40) A=TRAY
- 12.INSULATOR COLOR 3=Black



Recommended Panel Cut-Out
 TOLERANCE: ±0.05mm



Recommended P.C.B LAYOUT
 TOLERANCE : ±0.05mm



PIN	A	B	C	D	X	Y	Z
9	39.50	31.00	25.00	16.34	25.20	20	11.08
15	48.00	39.30	33.32	24.66	33.50	28.30	19.39
25	61.50	53.20	47.04	38.38	47.20	42.00	33.24
37	77.80	69.50	63.50	54.84	63.70	58.50	49.86

UNLESS OTHERWISE SPECIFIED TOLERANCE	
ANG.	±5°
0.	±0.50
.0	±0.30
.00	±0.20

SCALE: AS SHOWN UNIT: mm

DRAWN **RITA** 05/09/2013
 CHECKED / /
 APPROVED / /

DATE SIZE A4 REV. B



CHANT SINCERE CO.,LTD
 TEL:886-02-86471251 FAX:886-02-86472962

DRAWN NAME: WATER-PROOF D-SUB (DIP180° FEMALE)

PRODUCT NO. 249AEXXFSSA3NXA3

FILE NAME: C-249AEXXFSSA3NXA3

REV.	DESCRIPTION	DATE
1		
2		
3		
4		
5		
6		