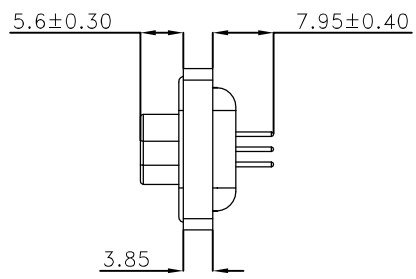
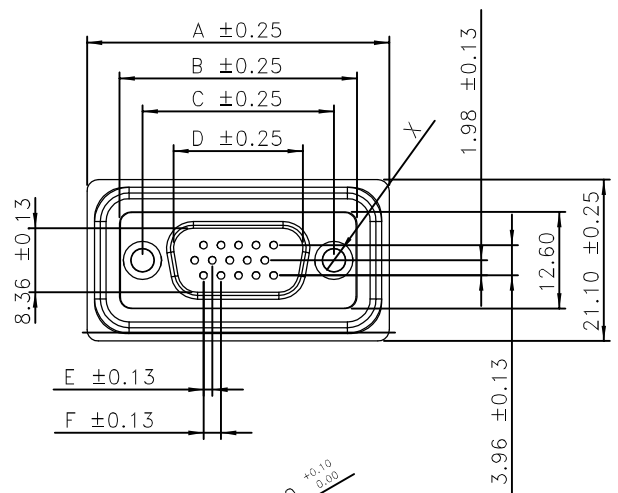


SPECIFICATION
MATERIAL
 Insulator: Thermoplastic
 Contacts: Copper Alloy
 Shell: Steel
 O-ring: Silicone
 Sealant: Epoxy-Resin
 Rivet: Copper Alloy

CONTACT PLATING
 Underplate :50u"~150u" Nickel
 Contact Area :1u"~30u" Selective Gold
 Rivet :50u"~100u" Nickel

ELECTRICAL
 Operation Voltage :250 VAC Max
 Current Rating :3 Amps Max
 Contact Resistance :15 Mohms Min 500 VDA
 Dielectric Withstanding Voltage 1000 VAC/Minute
 Temperature Range :-55°C TO +105°C
 Degree of Protection :IP67(IEC 60529)
 PART NO.

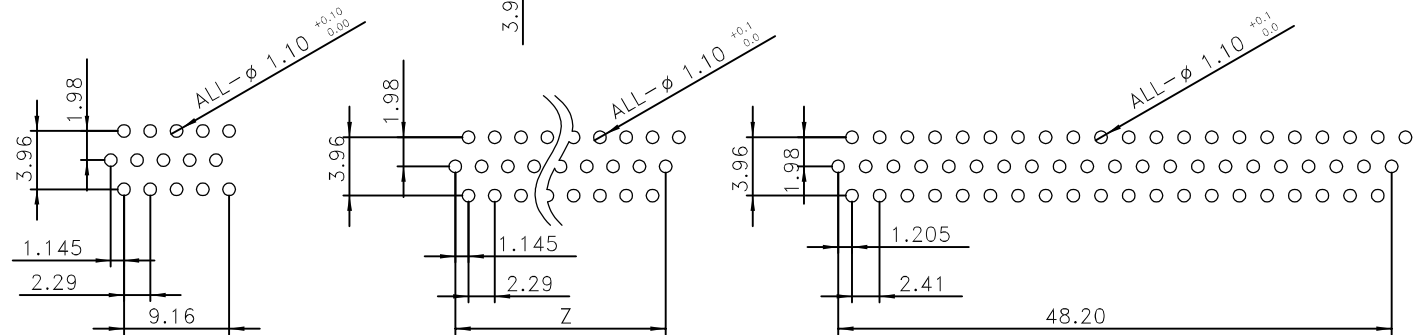


PARTS DIMENSION TABLE

Parts No	DIM A	DIM B	inter thread
3	5.0	9.5	4#40

149 A E XX M S S A2 Q X A 3
 1 2 3 4 5 6 7 8 9 10 11 12

- SERIES NO.
- TYPE
A=Standard
- GREEN OPTION:
E=RoHS (Bright)
- CONTACT NUMBER:
15 26 44 62
- CONTACT TYPE:
M=MALE
- PLATED ON THE CONTACT SIDE:
S=Gold Flash
- PLATED ON THE SOLDERING SIDE:
S=Gold Flash
- TYPE:
A2=102A
- SHELL PLATING:
Q=Nickel Plated+Dimple
- PROCESS OPTION
DIM FOR "X"
2=Fixed Hex-Rivet 4.5*4.9(4#40)
- PACKING:
A=Tray
- INSULATOR COLOR.
3=Black



Recommended P.C.B Layout For 15PIN TOLERANCE: ±0.05mm
 Recommended P.C.B Layout For 26PIN Z=18.32 For 44PIN Z=32.06 TOLERANCE: ±0.05mm
 Recommended P.C.B Layout For 62PIN TOLERANCE: ±0.05mm

PIN	A	B	C	D	E	F	W	Y
15	39.50	31.00	25.00	16.90	1.145	2.29	25.20	20
26	48.00	39.30	33.32	25.20	1.145	2.29	33.50	28.30
44	61.50	53.20	47.04	38.90	1.145	2.29	47.20	42.00
62	77.80	69.50	63.50	55.40	1.205	2.41	63.70	58.50

UNLESS OTHERWISE SPECIFIED TOLERANCE
 ANG. ±5°
 0. ±0.50
 .0 ±0.30
 .00 ±0.20



CHANT SINCERE CO.,LTD
 TEL:886-02-86471251 FAX:886-02-86472962

SCALE: AS SHOWN UNIT: mm
 DRAWN PEARL 07/30/2013
 CHECKED / /
 APPROVED / /

DRAWN NAME:
 WATER-PROOF HIGH DENSITY D-SUB(DIP180° MALE)
 PRODUCT NO. 149AEXXMSSA2QXA3

REV.	DESCRIPTION	DATE	SIZE	REV.	FILE NAME:
			A4	C	C-149AEXXMSSA2QXA3