

NOTES:  
 MATERIAL:  
 CAGE: COPPER ALLOY THICKNESS 0.25mm  
 CONNECTOR:  
 PLASTIC HOUSING: HIGH TEMPERATURE LCP, UL94 V-0.  
 LIGHT PIPE: POLYCARBONATE; COLOR: CLEAR  
 SPRING: STAINLESS STEEL, THICKNESS 0.20mm  
 CONTACTS: PHOSPHOR BRONZE, THICKNESS 0.20mm  
 PLATING: 15 $\mu$ " MIN. GOLD ON MATING AREA,  
 150 $\mu$ " MIN. MATE TIN ON SOLDER TAILS.  
 PACKAGING: TRAY PACKAGING.  
 OPERATING TEMPERATURE: -40°C TO +85°C  
 STORAGE TEMPERATURE: -55°C TO +105°C  
 PART NUMBER:

902 G H B6 B C T AA X 1 A 3  
 1 2 3 4 5 6 7 8 9 10 11 12

- |                              |                                     |
|------------------------------|-------------------------------------|
| 1.SERIES NO.                 | 9.SHELL PLATING:                    |
| 2.TYPE: G=PressFit           | 0=Non Plating/Spring                |
| 3.GREEN OPTION:              | N=Ni Plating(50 $\mu$ " Min)/Spring |
| H=RoHS+HF(Matte Plated)      | 10.PROCESS OPTION:                  |
| 4.PORT NO:                   | 1=With Inner&Outer Light Pipe       |
| B6=2x6                       | 11.PACKAGE OPTION:                  |
| 5.CONTACT TYPE:              | A=Tray                              |
| B=Female                     | 12.INSULATOR COLOR:                 |
| 6.CONTACT PLATING:           | 3=BLACK                             |
| C=15 $\mu$ " Gold            |                                     |
| 7.SOLDER TAILS AREA PLATING: |                                     |
| T=Tin plated                 |                                     |
| 8.TYPE OPTION:               |                                     |
| AA=SFP ASSEMBLY              |                                     |
| (Non Grounding Pin)          |                                     |

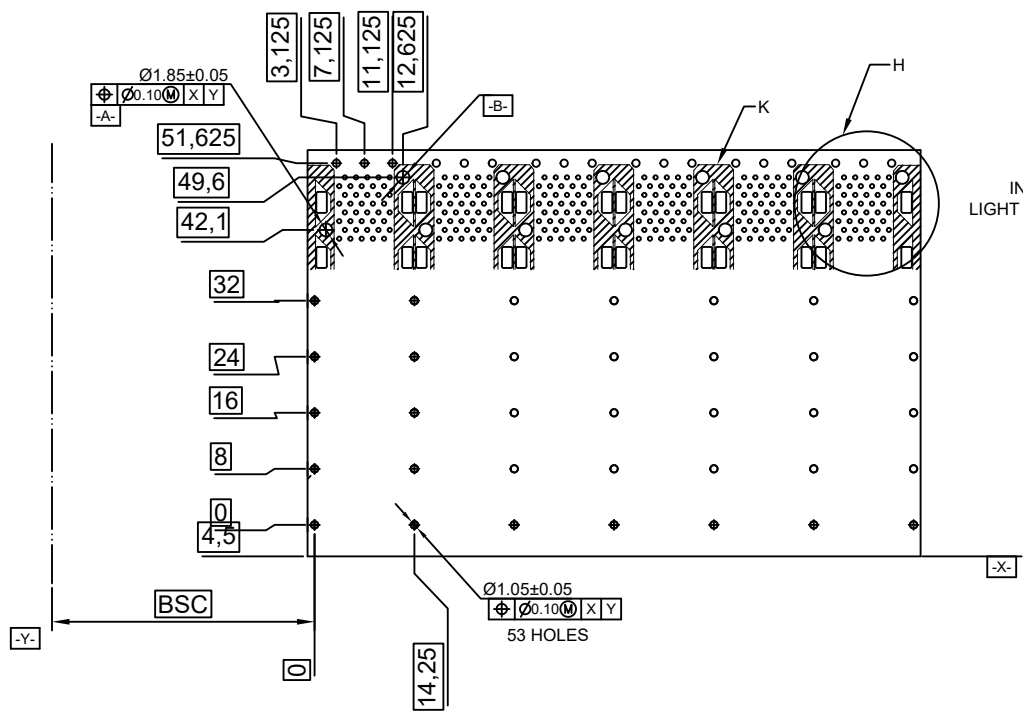
UNLESS OTHERWISE SPECIFIED TOLERANCE	
.X $\pm$ 0.20	.X $\pm$ 1°
.XX $\pm$ 0.15	.XX $\pm$ 5°
.XXX $\pm$ 0.10	



SCALE: AS SHOWN	UNIT: mm
DRAWN: PEARL	07/11/2019
CHECKED:	
APPROVED:	

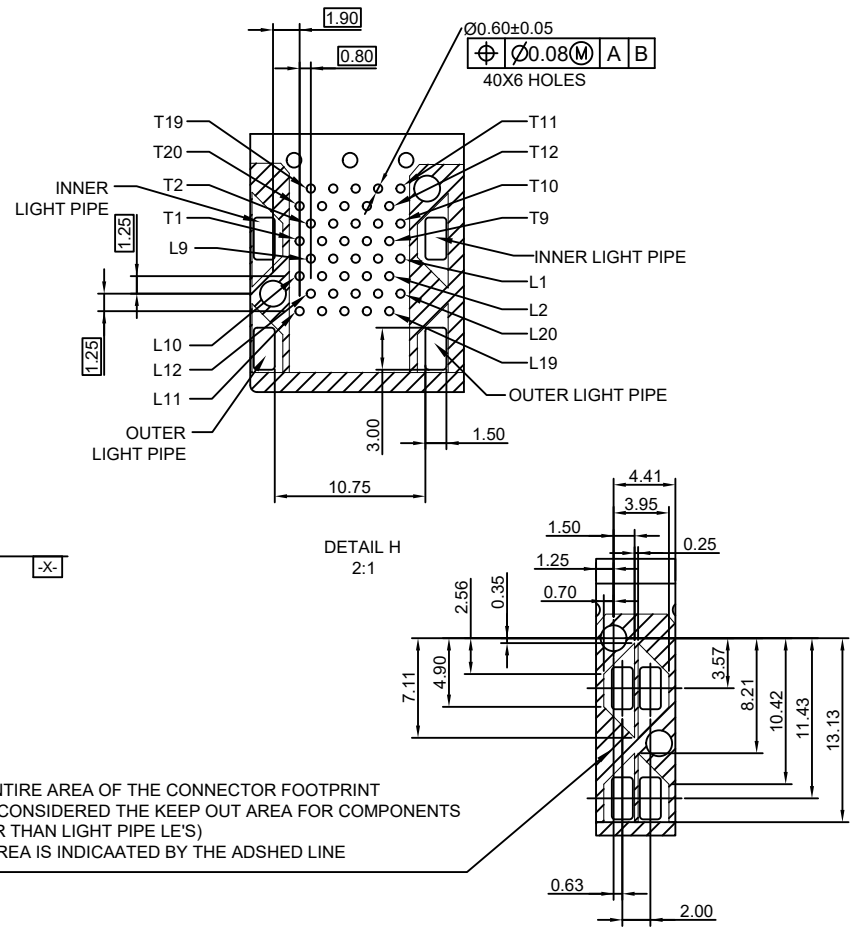
CHANT SINCERE CO.,LTD  
 TEL:886-02-86471251 FAX:886-02-86472362  
 DRAWN NAME:  
 SFP ASSY.2X6  
 PRESS FIT, NON Grounding Pin 1/4  
 PRODUCT NO. 902GHB6BCTAA1A3  
 FILE NAME: 902GHB6BCTAA01A3(X07)

REV.	DESCRIPTION	DATE	SIZE	REV.	FILE NAME
1			A4	X1	902GHB6BCTAA01A3(X07)



ECOMMENDED PCB CONFIGURATION

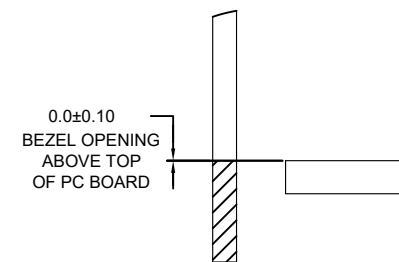
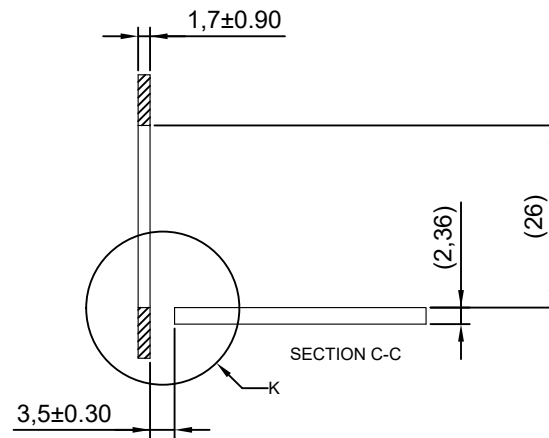
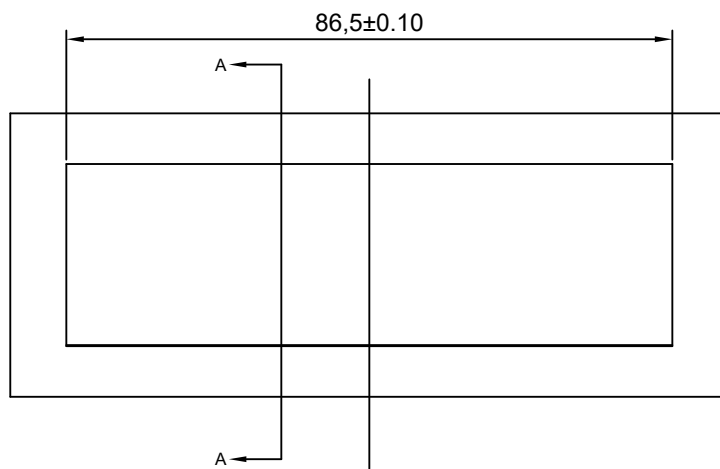
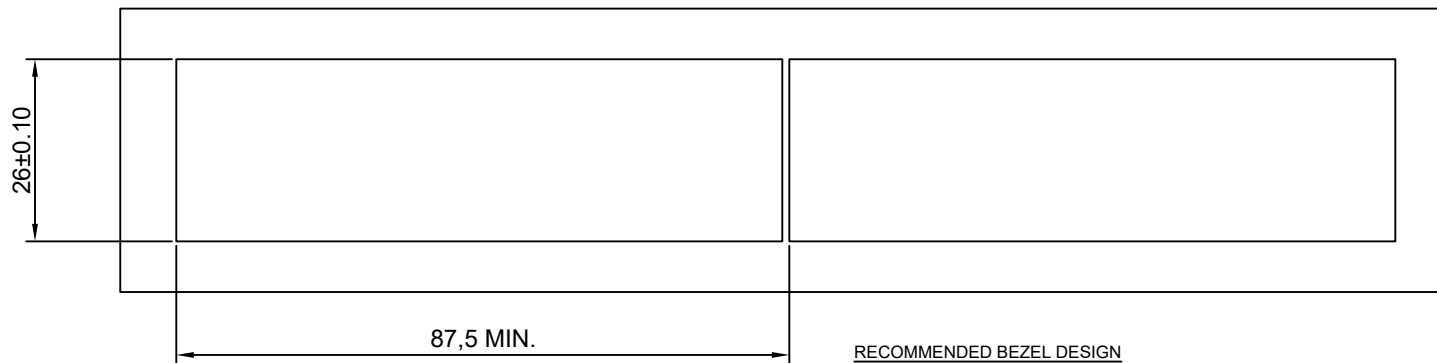
THE ENTIRE AREA OF THE CONNECTOR FOOTPRINT TO BE CONSIDERED THE KEEP OUT AREA FOR COMPONENTS (OTHER THAN LIGHT PIPE LE'S) THIS AREA IS INDICATED BY THE ADSDHED LINE



DETAIL LIGHT PIPE LOCATION AND OTHER ZONES  
DETAIL H 2:1  
DETAIL K 2:1

UNLESS OTHERWISE SPECIFIED TOLERANCE		
.X±0.20	.X±1°	
.XX±0.15	.XX±5°	<b>CHANT SINCERE CO.,LTD</b> TEL:886-02-86471251 FAX:886-02-86472362
.XXX±0.10		DRAWN NAME: SFP ASSY.2X6 CHECKED: PRESS FIT, NON Grounding Pin 2/4 APPROVED:
SCALE: AS SHOWN	UNIT: mm	PRODUCT NO. 902GHB6BCTAAX1A3
DRAWN: PEARL	07/11/2019	FILE NAME: 902GHB6BCTAA01A3(X07)

REV.	DESCRIPTION	DATE	SIZE	A4	REV.	X1
1						
2						
3						
4						
5						
6						
7						
8						
9						
10						



UNLESS OTHERWISE SPECIFIED TOLERANCE

.X±0.20	.X±1°
.XX±0.15	.XX±5°
.XXX±0.10	

SCALE: AS SHOWN UNIT: mm

DRAWN: PEARL 07/11/2019

CHECKED:

APPROVED:

SIZE A4 REV. X1



CHANT SINCERE CO.,LTD  
TEL 886-02-86471251 FAX 886-02-86472362

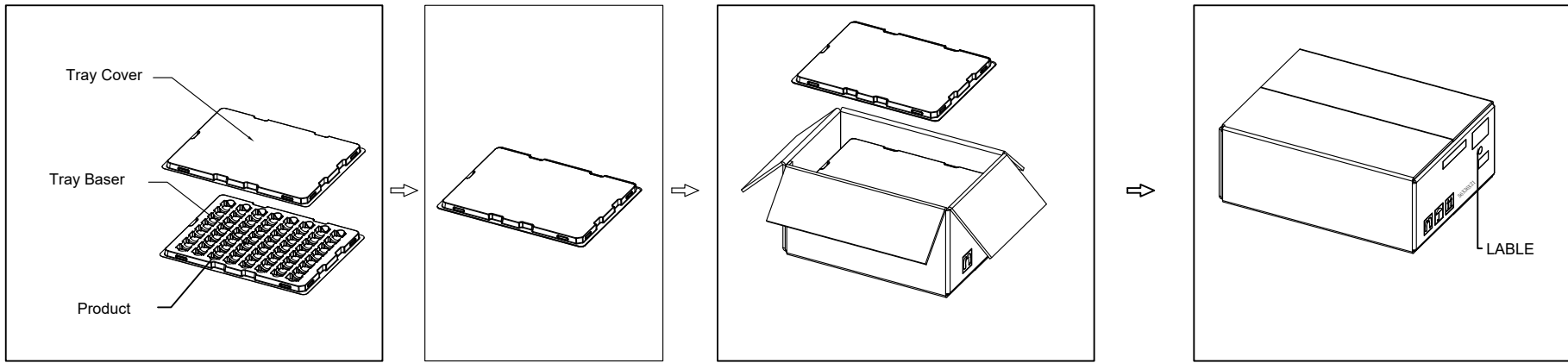
DRAWN NAME:  
SFP ASSY.2X6  
PRESS FIT, NON Grounding Pin 3/4

PRODUCT NO. 902GHB6BCTAAX1A3

FILE NAME: 902GHB6BCTAA01A3(X07)


REV.	DESCRIPTION	DATE

PACKAGE INFORMATION AND LABLE



PACKING QUANTITY : 6 PCS FINISHED GOODS PER TRAY

4 TRAYS (24 PCS FINISHED GOODS) PER CARTON BOX

UNLESS OTHERWISE SPECIFIED TOLERANCE		 <b>CHANT SINCERE CO.,LTD</b> TEL:886-02-86471251 FAX:886-02-86472362	
.X±0.20	.X±1°		
.XX±0.15	.XX±5°	SCALE: AS SHOWN	UNIT: mm
.XXX±0.10		DRAWN: PEARL	07/11/2019
		CHECKED:	
		APPROVED:	
			PRODUCT NO. 902GHB6BCTAA01A3
			FILE NAME: 902GHB6BCTAA01A3(X07)

REV.	DESCRIPTION	DATE	SIZE	A4	REV.	X1
1						
2						
3						
4						
5						
6						
7						
8						
9						
10						