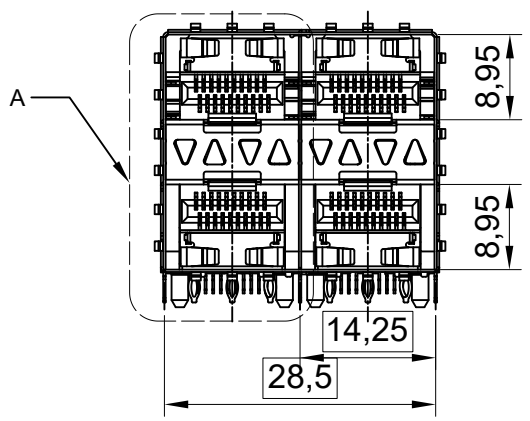


DETAIL A
1:1



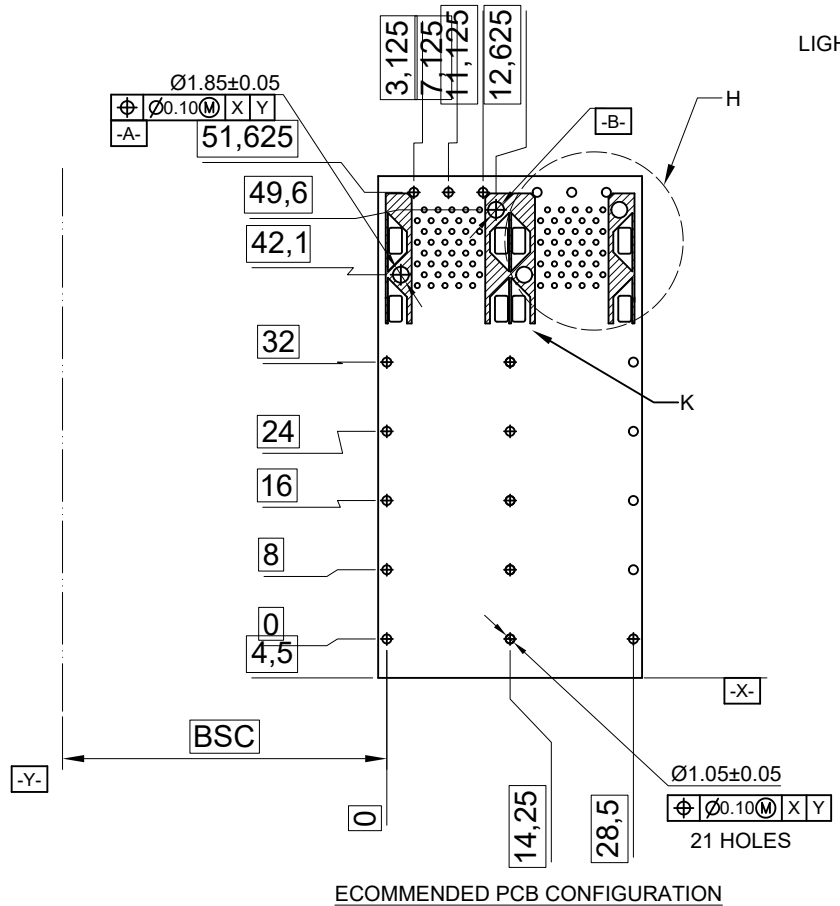
NOTES:
 MATERIAL:
 CAGE: COPPER ALLOY THICKNESS 0.25mm
 CONNECTOR:
 PLASTIC HOUSING: HIGH TEMPERATURE LCP, UL94 V-0.
 LIGHT PIPE: POLYCARBONATE; COLOR: CLEAR
 SPRING: STAINLESS STEEL, THICKNESS 0.20mm
 CONTACTS: PHOSPHOR BRONZE, THICKNESS 0.20mm
 PLATING: 15μ" MIN. GOLD ON MATING AREA,
 150μ" MIN. MATE TIN ON SOLDER TAILS.
 PACKAGING: TRAY PACKAGING.
 OPERATING TEMPERATURE: -40°C TO +85°C
 STORAGE TEMPERATURE: -55°C TO +105°C

PART NUMBER:
 902 G H B2 B C T AA X 1 A 3
 1 2 3 4 5 6 7 8 9 10 11 12

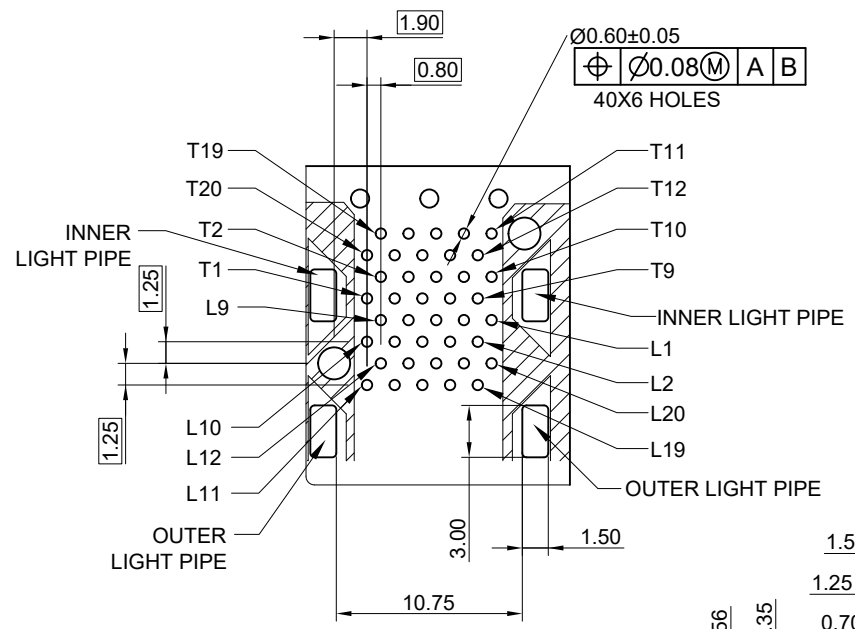
- 1.SERIES NO.
- 2.TYPE: G=PressFit
- 3.GREEN OPTION:
H=RoHS+HF(Matte Plated)
- 4.PORT NO:
B2=2x2
- 5.CONTACT TYPE:
B=Female
- 6.CONTACT PLATING:
C=15u" Gold
- 7.SOLDER TAILS AREA PLATING:
T=Tin plated
- 8.TYPE OPTION:
AA=SFP ASSEMBLY
(Non Grounding Pin)
- 9.SHELL PLATING:
0=Non Plating/Spring
N=Ni Plating(50u" Min)/Spring
- 10.PROCESS OPTION:
1=With Inner&Outer Light Pipe
- 11.PACKAGE OPTION:
A=Tray
- 12.INSULATOR COLOR:
3=BLACK

UNLESS OTHERWISE SPECIFIED TOLERANCE			
.X±0.20	.X±1°		
.XX±0.15	.XX±5°	CHANT SINCERE CO.,LTD TEL:886-02-86471251 FAX:886-02-86472362	
SCALE: AS SHOWN	UNIT: mm	DRAWN NAME: SFP ASSY.2X2	
DRAWN: PEARL	07/11/2019	CHECKED: PRESS FIT, NON Grounding Pin 1/4	
CHECKED:		APPROVED:	
APPROVED:		PRODUCT NO. 902GHB2BCTAA1A3	
REV.		DATE	FILE NAME: 902GHB2BCTAA01A3(X07)

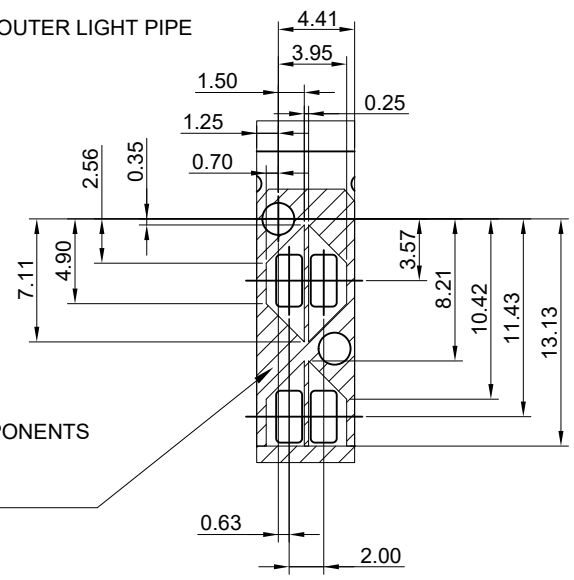
REV.	DESCRIPTION	DATE
1		
2		
3		
4		
5		
6		
7		
8		
9		
10		



ECOMMENDED PCB CONFIGURATION



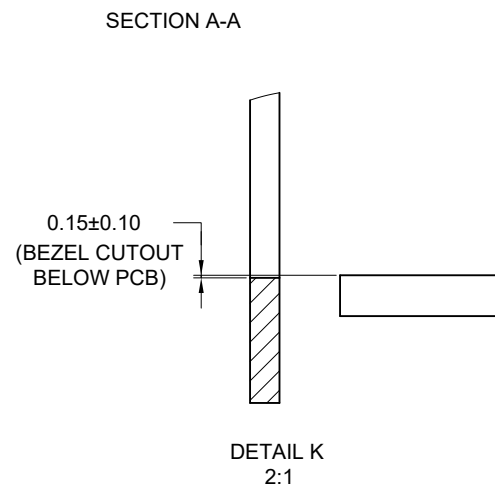
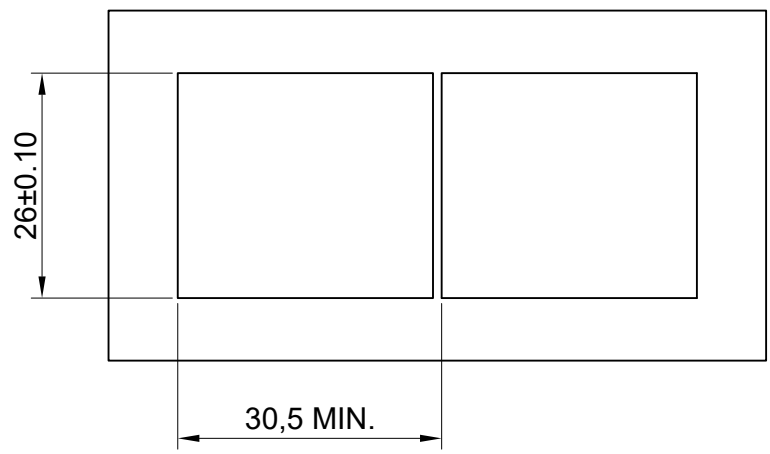
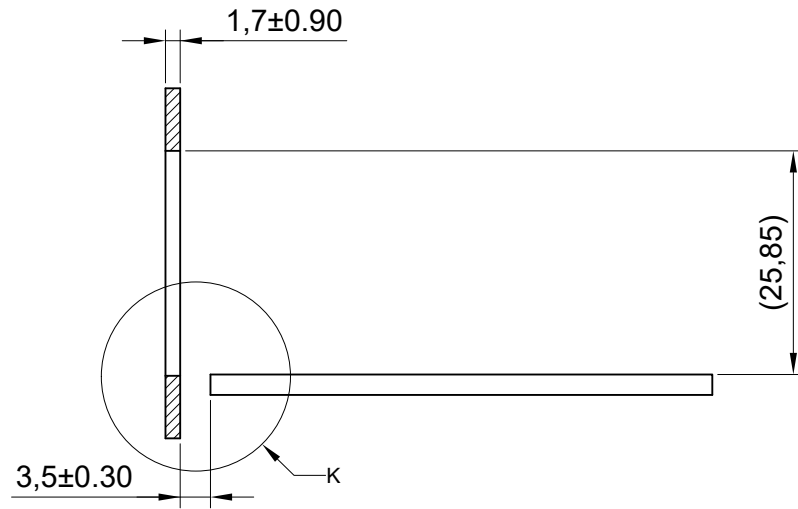
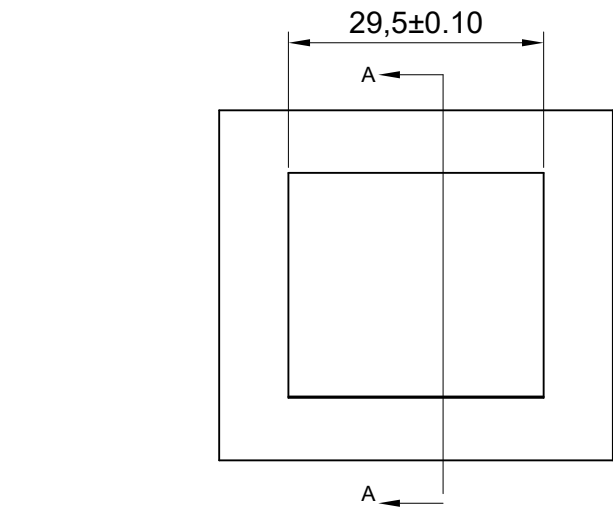
THE ENTIRE AREA OF THE CONNECTOR FOOTPRINT
 TO BE CONSIDERED THE KEEP OUT AREA FOR COMPONENTS
 (OTHER THAN LIGHT PIPE LE'S)
 THIS AREA IS INDICAATED BY THE AD SHED LINE



DETAIL LIGHT PIPE LOCATION AND OTHER ZONES
DETAIL K
2:1

UNLESS OTHERWISE SPECIFIED TOLERANCE		
.X±0.20	.X±1°	
.XX±0.15	.XX±5°	CHANT SINCERE CO.,LTD TEL:886-02-86471251 FAX:886-02-86472362
.XXX±0.10		DRAWN NAME: SFP ASSY.2X2
SCALE: AS SHOWN	UNIT: mm	CHECKED: PRESS FIT, NON Grounding Pin 2/4
DRAWN: PEARL	07/11/2019	APPROVED: PRODUCT NO. 902GHB2BCTAAX1A3
DATE	SIZE A4	FILE NAME: 902GHB2BCTAA01A3(X07)
REV.	REV. X1	

REV.	DESCRIPTION	DATE	SIZE	REV.	FILE NAME
1			A4	X1	902GHB2BCTAA01A3(X07)



RECOMMENDED BEZEL DESIGN

SECTION A-A

DETAIL K
2:1

UNLESS OTHERWISE SPECIFIED TOLERANCE	
.X±0.20	.X±1°
.XX±0.15	.XX±5°
.XXX±0.10	



CHANT SINCERE CO.,LTD
TEL 886-02-86471251 FAX 886-02-86472362

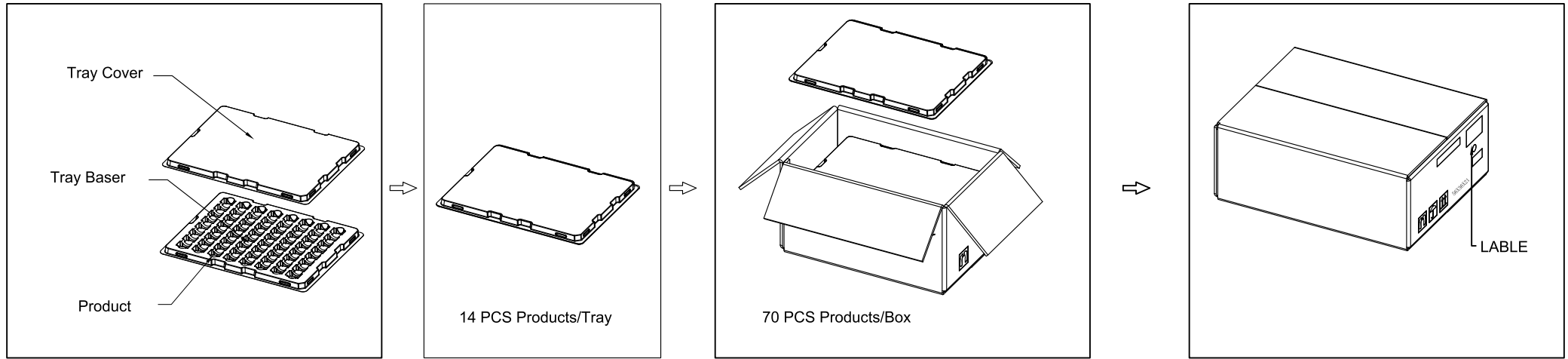
SCALE:	AS SHOWN	UNIT:	mm
DRAWN:	PEARL	DATE:	07/11/2019
CHECKED:			
APPROVED:			

DRAWN NAME:	SFP ASSY.2X2
	PRESS FIT, NON Grounding Pin 3/4
PRODUCT NO.	902GHB2BCTAAX1A3
FILE NAME:	902GHB2BCTAA01A3(X07)

REV.	DESCRIPTION	DATE


SIZE	A4	REV.	X1
------	----	------	----

PACKAGE INFORMATION AND LABEL



PACKING QUANTITY : 14 PCS FINISHED GOODS PER TRAY

5 TRAYS (70 PCS FINISHED GOODS) PER CARTON BOX

UNLESS OTHERWISE SPECIFIED TOLERANCE .X±0.20 .X±1° .XX±0.15 .XX±5° .XXX±0.10		 CHANT SINCERE CO.,LTD TEL:886-02-86471251 FAX:886-02-86472362	
SCALE: AS SHOWN	UNIT: mm		
DRAWN: PEARL	07/11/2019	DRAWN NAME: SFP ASSY.2X2	
CHECKED:		PRESS FIT, NON Grounding Pin 4/4	
APPROVED:		PRODUCT NO. 902GHB2BCTAAX1A3	
REV.	DESCRIPTION	DATE	FILE NAME: 902GHB2BCTAA01A3(X07)
1	2	3	4
5	6	7	8
9	10		