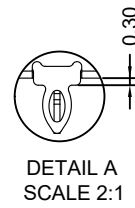
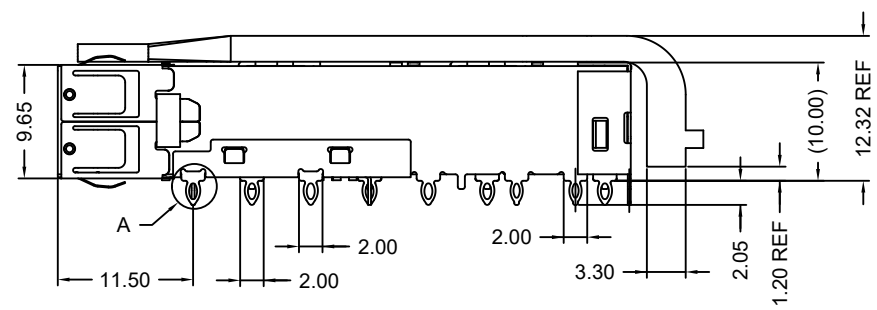
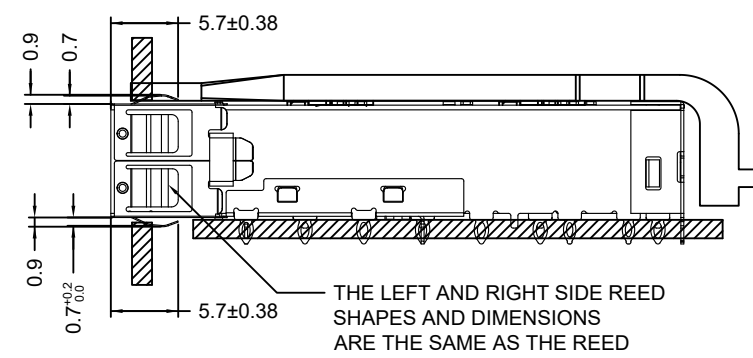


1.MATERIAL:  
 CAGE: COPPER ALLOY, THICKNESS 0.25mm  
 LIGHT PIPE: CLEAR POLYCARBONATE  
 2.PACKAGING: TRAY PACKAGING  
 3.TEMPERATURE RANGE:  
 OPERATING : -40°C TO +85°C  
 NON OPERATING : -55°C TO +105°C

PART NUMBER:  
 902 G X A4 S 5 X C2 X 0 A 0  
 1 2 3 4 5 6 7 8 9 10 11 12

1.SERIES NO.  
 2.TYPE: G=PressFit  
 3.GREEN OPTION:  
 E=RoHS(For W/O Light Pipe)  
 G=RoHS+HF(For W/Light Pipe)  
 4.PORT NO:  
 A4=1x4  
 5.CONTACT TYPE:  
 S=SILVER COPPER  
 6.STRUCTURE TYPE:  
 5=with Light Pipe Structure  
 7.LIGHT PIPES TYPE:  
 0=W/O Light Pipe  
 2=W/Light Pipe(Un-assembly)

8.TYPE OPTION:  
 C2=SFP+ Cage  
 9.SHELL PLATING/TYPE:  
 0=Non Plating/Spring  
 N=Ni Plating/Spring  
 10.HEAT SINK DEFINITION:  
 0=W/O Heatsink  
 A=Tray  
 12.INSULATOR COLOR:  
 0=Non Function



UNLESS OTHERWISE SPECIFIED TOLERANCE  
 .X±0.20 .X±1°  
 .XX±0.15 .XX±5°  
 .XXX±0.10



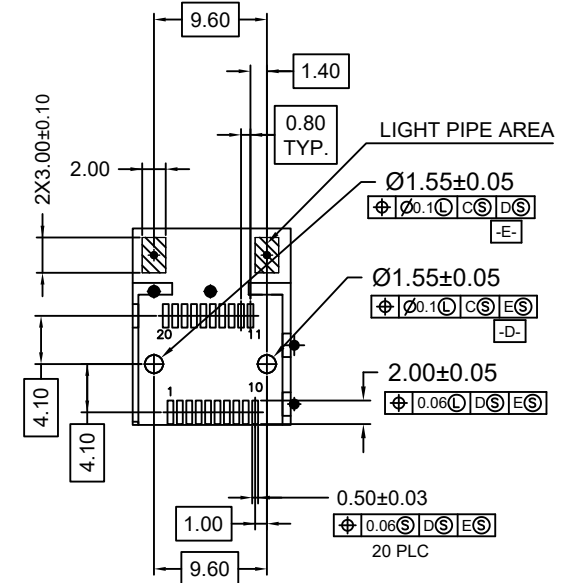
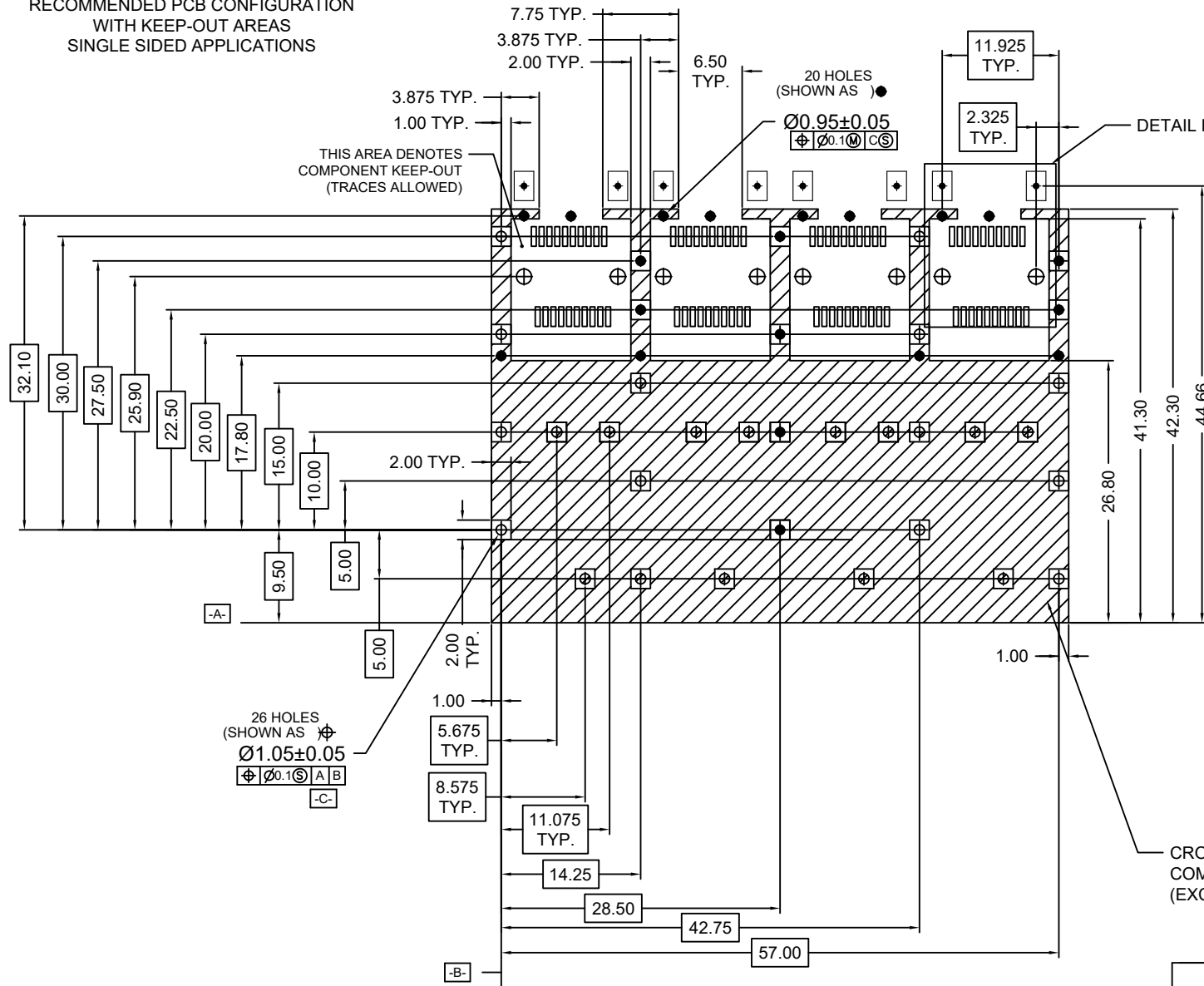
CHANT SINCERE CO., LTD  
 TEL:886-02-86471251 FAX:886-02-86472962

SCALE: AS SHOWN UNIT: mm  
 DRAWN Phoebe 03/12/2019  
 CHECKED / /  
 APPROVED / /

DRAWN NAME: SFP+ 1X4 CAGE  
 PRODUCT NO. 902GXA4S5XC2X0A0  
 FILE NAME: 902GEA4S50C2N0A0(X07)

REV.	DESCRIPTION	DATE

RECOMMENDED PCB CONFIGURATION  
WITH KEEP-OUT AREAS  
SINGLE SIDED APPLICATIONS



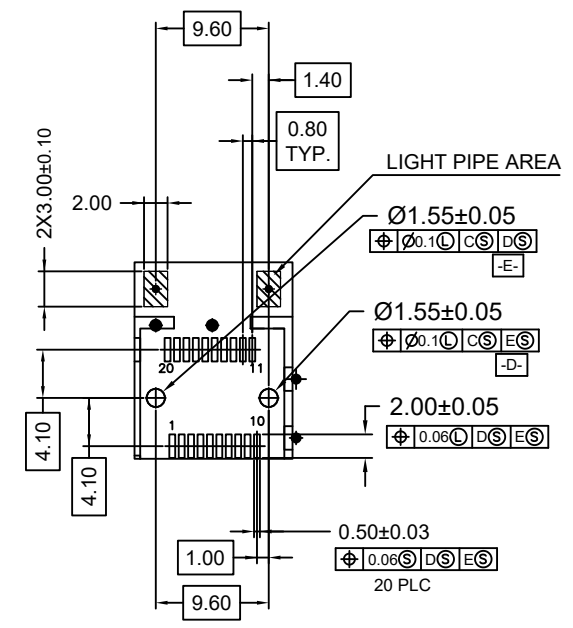
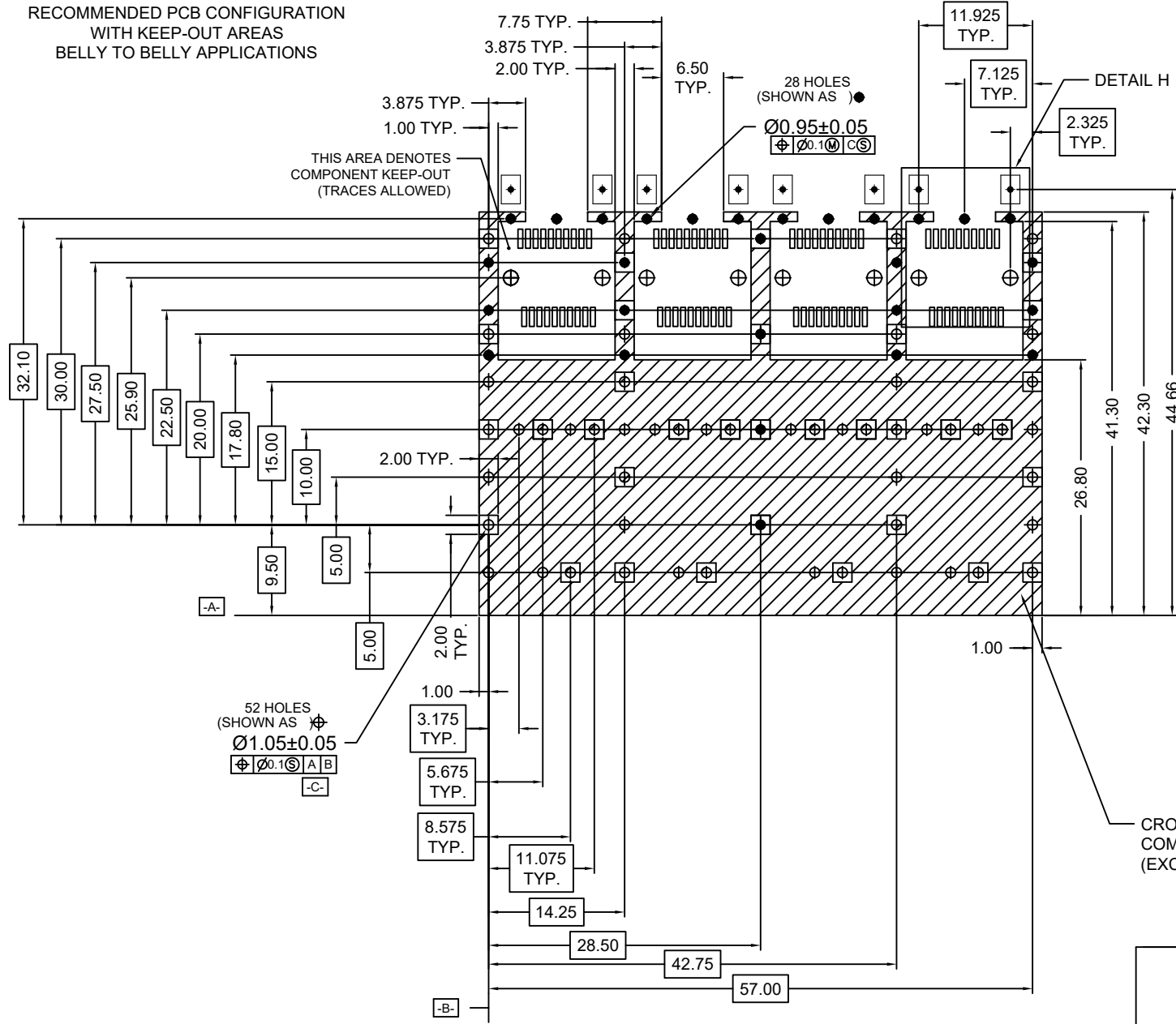
DETAIL H  
RECOMMENDED CONNECTOR LAYOUT  
4X INDIVIDUALLY

CROSS-HATCHED AREA DENOTES  
COMPONENT AND TRACE KEEP-OUT  
(EXCEPT CHASSIS GROUND)

UNLESS OTHERWISE SPECIFIED TOLERANCE			<b>CHANT SINCERE CO., LTD</b> TEL:886-02-86471251 FAX:886-02-86472962
.X±0.20	.X±1°		
.XX±0.15	.XX±5°		
.XXX±0.10			
SCALE: AS SHOWN	UNIT: mm	DRAWN NAME: SFP+ 1X4 CAGE	
DRAWN Phoebe	03/12/2019	PRODUCT NO. 902GXA4S5XC2X0A0	
CHECKED	/ /	FILE NAME: 902GEA4S50C2N0A0(X07)	
APPROVED	/ /		

REV.	DESCRIPTION	DATE
1		
2		
3		
4		
5		
6		
7		

RECOMMENDED PCB CONFIGURATION  
WITH KEEP-OUT AREAS  
BELLY TO BELLY APPLICATIONS



CROSS-HATCHED AREA DENOTES  
COMPONENT AND TRACE KEEP-OUT  
(EXCEPT CHASSIS GROUND)

UNLESS OTHERWISE SPECIFIED TOLERANCE	
.X±0.20	.X±1°
.XX±0.15	.XX±5°
.XXX±0.10	

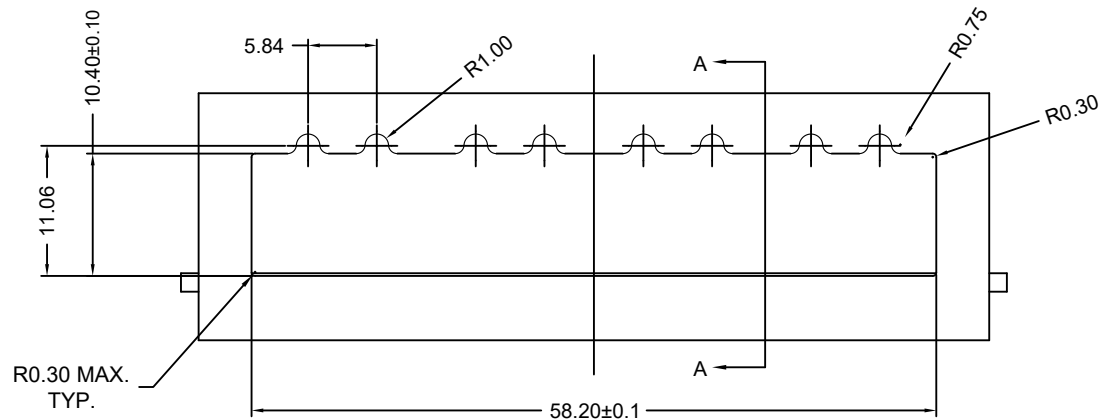


**CHANT SINCERE CO., LTD**  
TEL:886-02-86471251 FAX:886-02-86472962

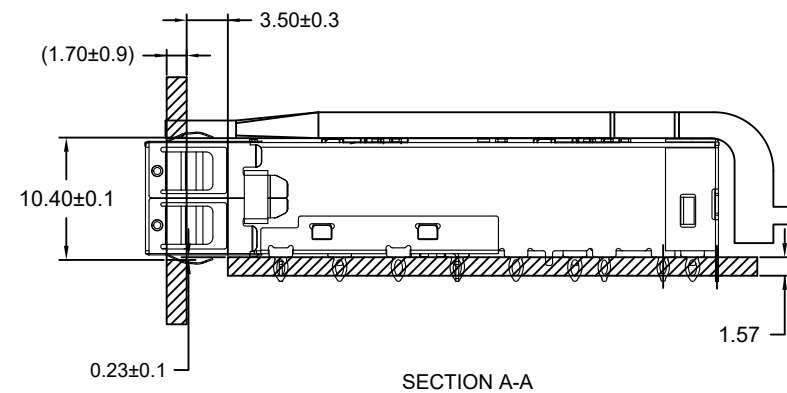
SCALE: AS SHOWN	UNIT: mm
DRAWN Phoebe	03/12/2019
CHECKED / /	
APPROVED / /	

DRAWN NAME:	SFP+ 1X4 CAGE
PRODUCT NO.	902GXA4S5XC2X0A0
FILE NAME:	902GEA4S50C2N0A0(X07)

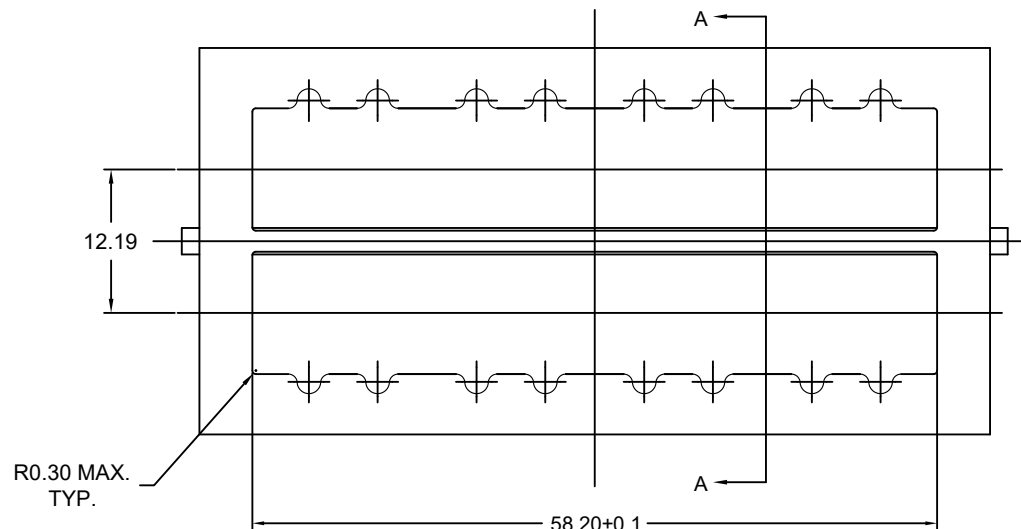
REV.	DESCRIPTION	DATE	SIZE	REV.
1			A4	A



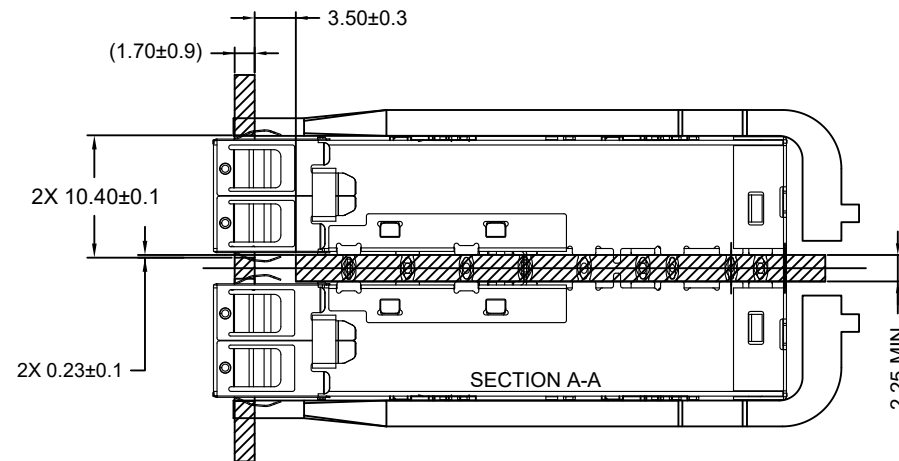
**RECOMMENDED BEZEL DESIGN  
SINGLE SIDED APPLICATIONS**




SECTION A-A



**RECOMMENDED BEZEL DESIGN  
BELLY TO BELLY APPLICATIONS**

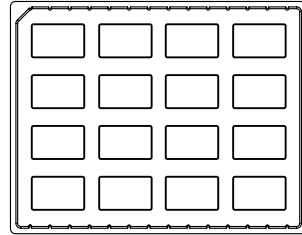


SECTION A-A

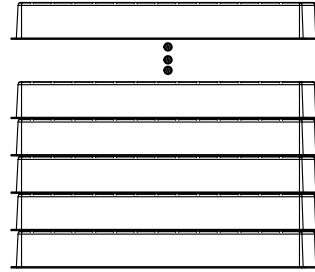
UNLESS OTHERWISE SPECIFIED TOLERANCE		 <b>CHANT SINCERE CO., LTD</b> TEL:886-02-86471251 FAX:886-02-86472962	
.X±0.20	.X±1°		
.XX±0.15	.XX±5°	SCALE: AS SHOWN	UNIT: mm
.XXX±0.10		DRAWN Phoebe	03/12/2019
		CHECKED	/ /
		APPROVED	/ /
		DATE	
		SIZE A4	REV. A
		DRAWN NAME:	SFP+ 1X4 CAGE
		PRODUCT NO.	902GXA4S5XC2X0A0
		FILE NAME:	902GEA4S50C2N0A0(X07)

REV.	DESCRIPTION	DATE
1		
2		
3		
4		
5		

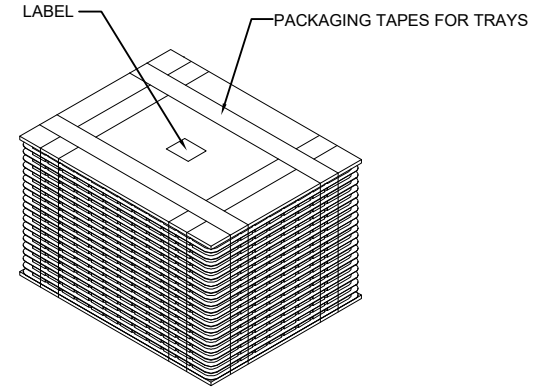
# PACKAGE INFORMATION AND LABEL



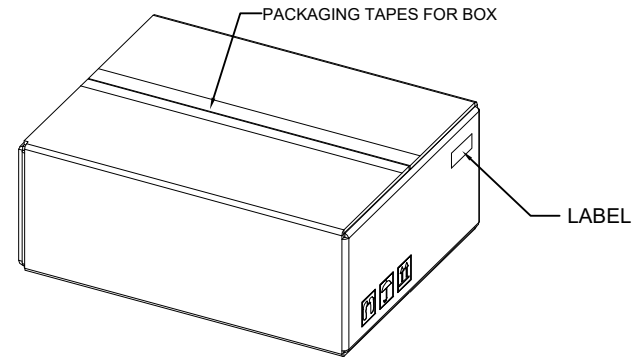
1. PRODUCTS IN TRAYS



2. TRAYS OVERLAY:  
(THE NEXT TRAY NEED ROTATE 180 DEGREE AND PUT IT ON PREVIOUS TRAY.)  
(相邻两个吸塑间水平方向成180度摆放)




3. LABEL & PACKAGING TAPES FOR TRAYS:



4. LABEL & PACKAGING TAPES FOR BOX

PACKAGING LISTS	
ITEM	QTY
PRODUCT	90 PCS
TRAY	5 PCS
BOX(L340*W265*H200MM)	1 PCS
LABLE	2 PCS
PACKAGING TAPES	8 M (ABOUT)

UNLESS OTHERWISE SPECIFIED TOLERANCE .X±0.20      .X±1° .XX±0.15    .XX±5° .XXX±0.10		 <b>CHANT SINCERE CO., LTD</b> TEL:886-02-86471251 FAX:886-02-86472962	
SCALE: AS SHOWN	UNIT: mm		
DRAWN Phoebe	03/12/2019	DRAWN NAME: SFP+ 1X4 CAGE	
CHECKED	/ /	5/5	
APPROVED	/ /	PRODUCT NO. 902GXA4S5XC2X0A0	
REV. A	DATE	FILE NAME: 902GEA4S50C2N0A0(X07)	

REV.	DESCRIPTION	DATE