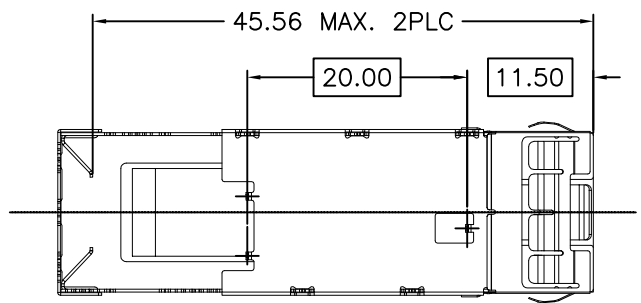
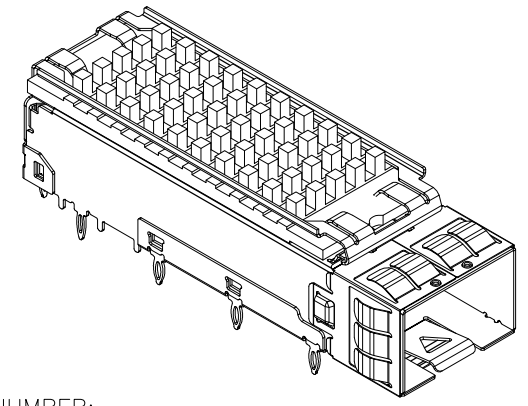
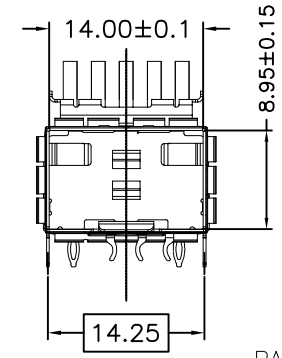
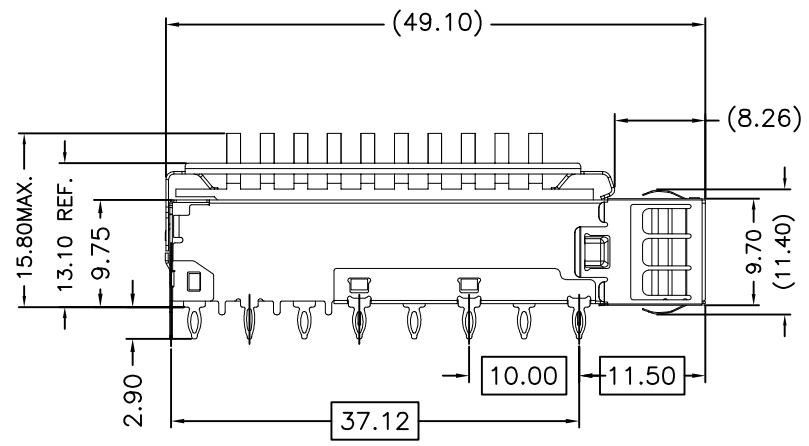
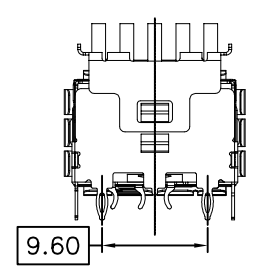
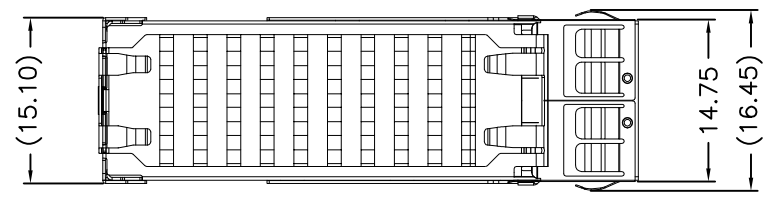


NOTES:
 1.MATERIAL:
 CAGE: COPPER ALLOY,NI PLATING(0.76um min),THICKNESS 0.25mm
 HEAT SINK : ALUMINUM(SURFACE TREATMENT:
 BLACK OXIDE)
 CLIP: STAINLESS STEEL
 2.PACKAGING: TRAY PACKAGING
 3.TEMPERATURE RANGE: -55°C TO +85°C



PART NUMBER:

902 G E A1 S F 0 C2 X S A 0
 1 2 3 4 5 6 7 8 9 10 11 12

- 1.SERIES NO.
- 2.TYPE: G=PressFit
- 3.GREEN OPTION:
E=RoHS
- 4.PORT NO:
A1=1x1
- 5.CONTACT TYPE:
S=Non Distribution
- 6.LAYOUT TYPE:
F=F Type
- 7.LIGHT PIPES TYPE:
0=W/O Light Pipe
- 8.TYPE OPTION:
C2=SFP+ Cage
- 9.SHELL PLATING/TYPE:
0=W/O Plating/Spring
N=Ni Plating/Spring
- 10.PROCESS OPTION:
S=W/Heatsink(15.8mm)
- 11.PACKAGE OPTION:
A=Tray
- 12.INSULATOR COLOR:
0=Non Function

UNLESS OTHERWISE SPECIFIED TOLERANCE	
.X±0.20	.X±1'
.XX±0.15	.XX±5'
.XXX±0.10	



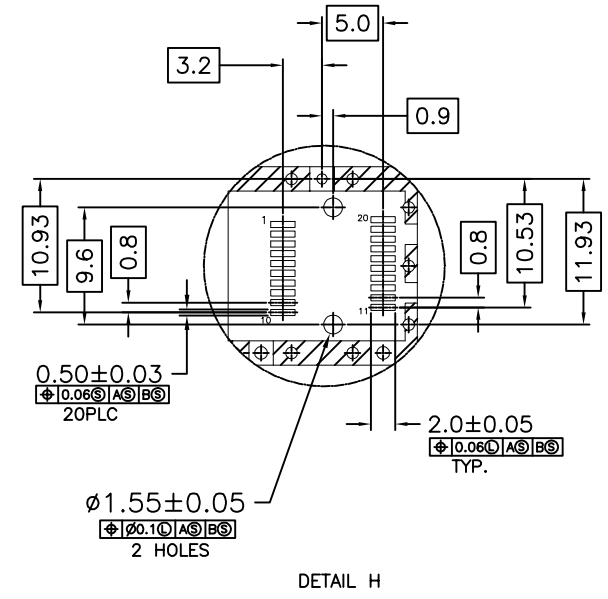
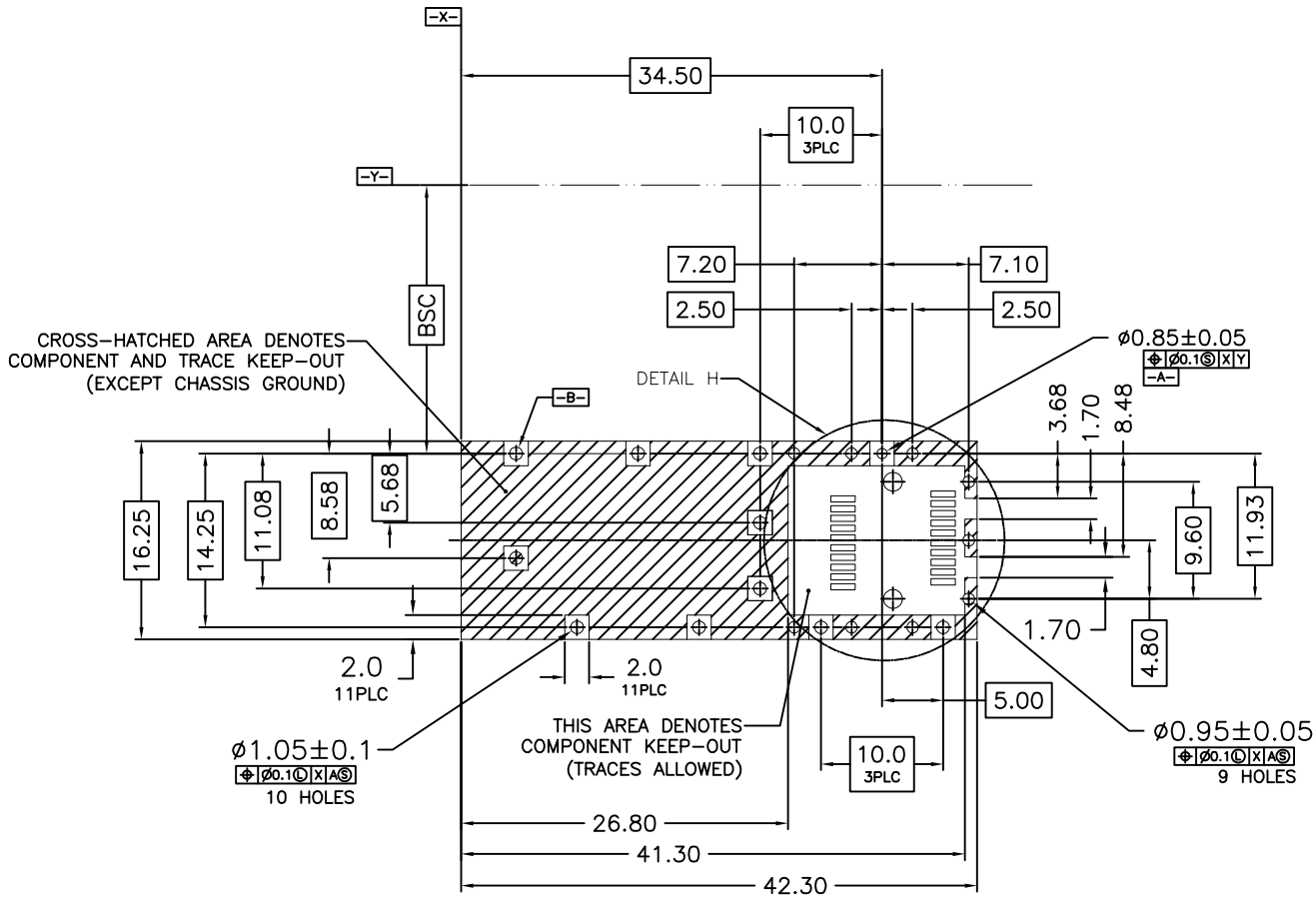
CHANT SINCERE CO.,LTD
 TEL:886-02-86471251 FAX:886-02-86472962

SCALE: AS SHOWN	UNIT: mm
DRAWN PEARL	02/10/2019
CHECKED	
APPROVED	

Title: SFP+ 1X1 CAGE,WITH HEAT SINK
 Part NO. 902GEA1SF0C2XSA0
 Code: X07 Customer:

Zone	Revision	DESCRIPTION	DATE
1			
2			
3			
4			
5			
6			

SIZE A4	REV. X1
---------	---------



ECOMMENDED PCB CONFIGURATION

UNLESS OTHERWISE SPECIFIED TOLERANCE	
.X±0.20	.X±1'
.XX±0.15	.XX±5'
.XXX±0.10	
SCALE: AS SHOWN	UNIT: mm
DRAWN PEARL	02/10/2019
CHECKED	
APPROVED	
SIZE A4	REV. X1

OXOC

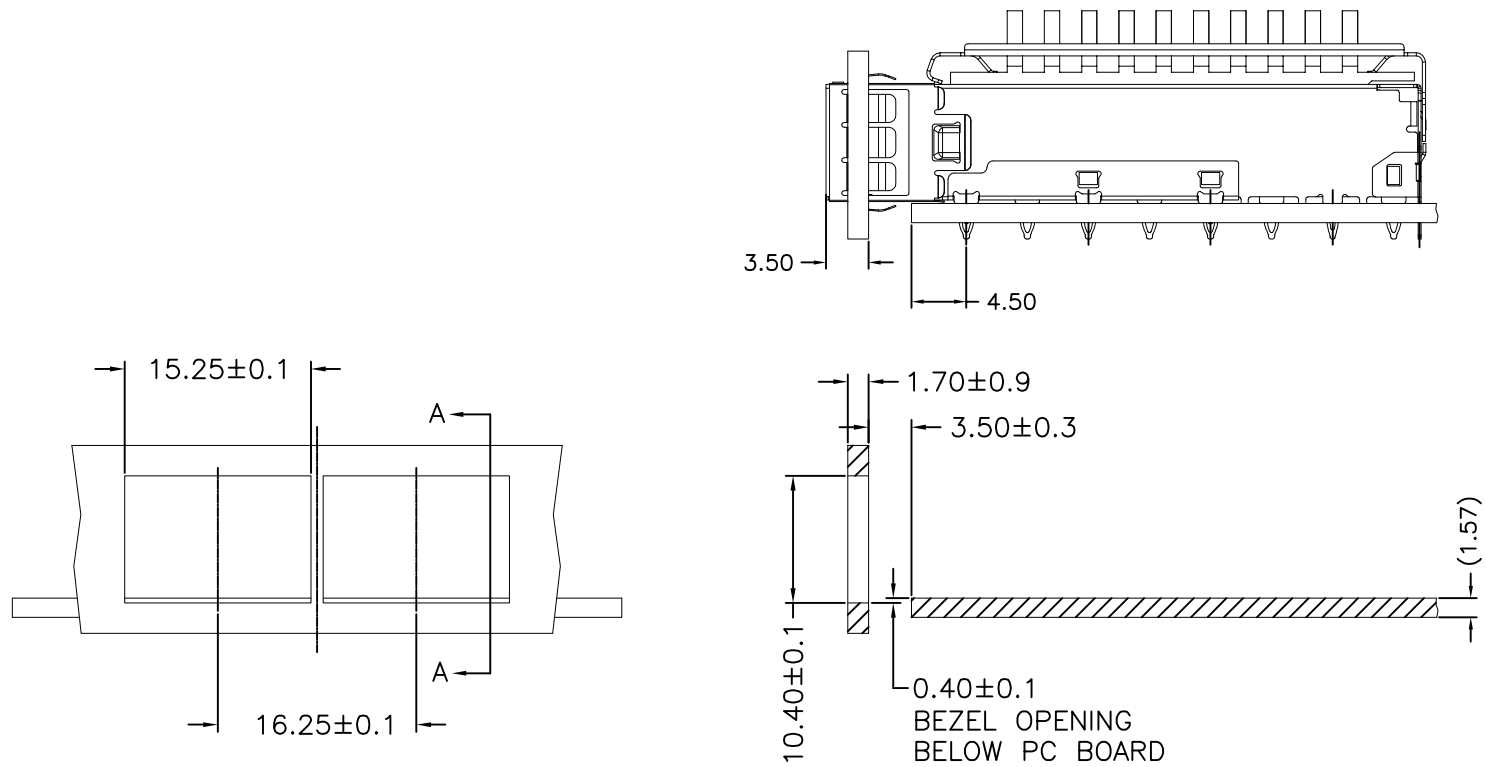
CHANT SINCERE CO.,LTD
TEL:886-02-86471251 FAX:886-02-86472962

Title: SFP+ 1X1 CAGE,WITH HEAT SINK

Part NO. 902GEA1SF0C2XSA0

Code: X07 Customer:

Zone	Revision	DESCRIPTION	DATE
1			
2			
3			
4			
5			
6			



RECOMMENDED BEZEL DESIGN

SECTION A-A

UNLESS OTHERWISE SPECIFIED TOLERANCE

.X±0.20 .X±1*
 .XX±0.15 .XX±5*
 .XXX±0.10



CHANT SINCERE CO.,LTD
 TEL:886-02-86471251 FAX:886-02-86472962

SCALE: AS SHOWN UNIT: mm

DRAWN PEARL 02/10/2019

CHECKED

APPROVED

Title: SFP+ 1X1 CAGE,WITH HEAT SINK 3/3

Part NO. 902GEA1SF0C2XSA0

Code: X07 Customer:

Zone	Revision	DESCRIPTION	DATE
1			
2			
3			
4			
5			
6			
7			
8			
9			
10			

SIZE A4 REV. X1