

NOTES:
 1.MATERIAL:
 CAGE: COPPER ALLOY, THICKNESS 0.25mm
 HEAT SINK : ALUMINUM(SURFACE TREATMENT:
 BLACK OXIDE)
 CLIP: STAINLESS STEEL
 2. FINISH
 SFP TOP CAGE : NI-PLATED OVER ALL
 SFP BOTTOM CAGE : NI-PLATED OVER ALL
 3.PACKAGING: TRAY PACKAGING
 4. TEMPERATURE:
 OPERATION : -40°C TO +85°C
 STORAGE : -55°C TO +105°C

PART NUMBER:

902 G E A1 P 0 0 C2 X P A 0
 1 2 3 4 5 6 7 8 9 10 11 12

- 1.SERIES NO.
- 2.TYPE: G=PressFit
- 3.GREEN OPTION:
E=RoHS
- 4.PORT NO:
A1=1x1
- 5.CONTACT TYPE:
P=Non Distribution
- 6.LAYOUT TYPE:
0=Standard
- 7.LIGHT PIPES TYPE:
0=W/O Light Pipe
- 8.TYPE OPTION:
C2=SFP+ Cage
- 9.SHELL PLATING/TYPE:
0=Non Plating/Spring
N=NI Plating/Spring
- 10.HEAT SINK DEFINITION:
P=H HEIGHT 13.5mm FOR PCI
- 11.PACKAGE OPTION:
A=Tray
- 12.INSULATOR COLOR:
0=Non Function

UNLESS OTHERWISE
 SPECIFIED TOLERANCE
 .X±0.20 .X±1'
 .XX±0.15 .XX±5"
 .XXX±0.10

SCALE: AS SHOWN UNIT: mm
 DRAWN: PEARL 02/26/2019
 CHECKED:
 APPROVED:



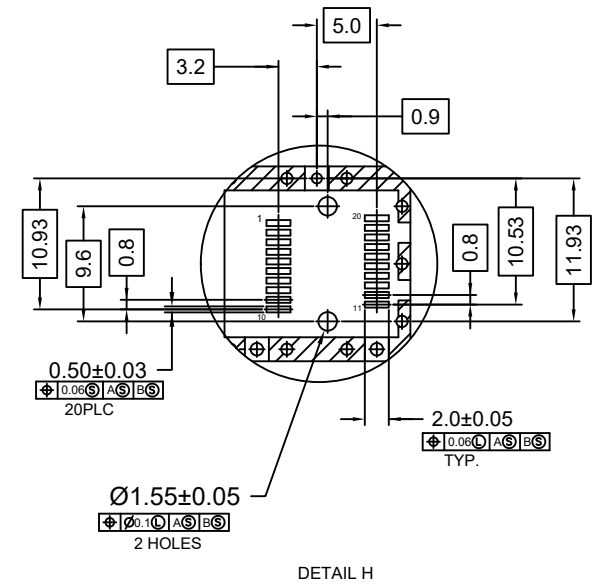
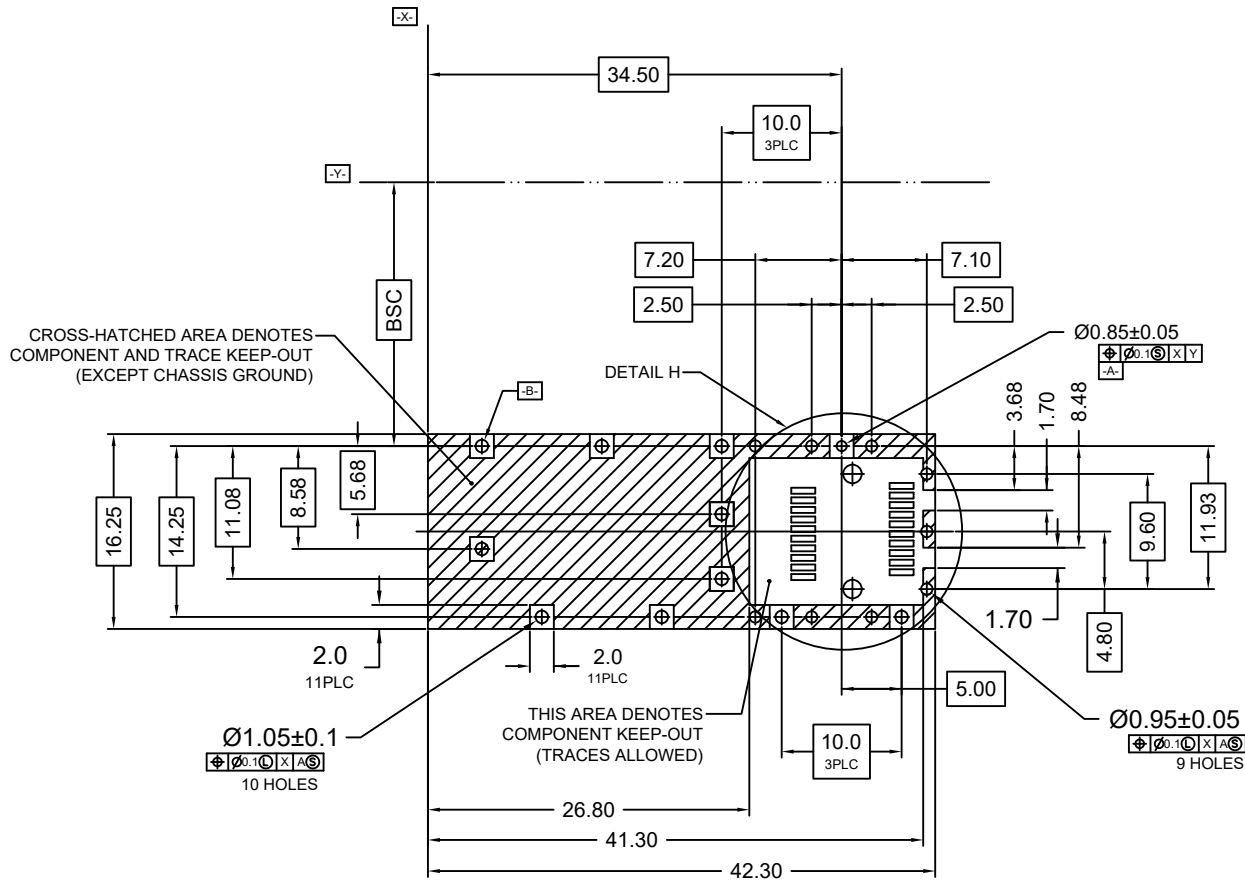
CHANT SINCERE CO.,LTD
 TEL:886-02-86471251 FAX:886-02-86472362

DRAWN NAME:
 SFP+ 1X1 ASSY WITH HEATSINK,
 PRESS FIT,WITH EMI SPRINGS 1/3



PRODUCT NO. 902GEA1P00C2XPA0

FILE NAME: 902GEA1P00C20PA0(X07)

REV.	DESCRIPTION	DATE	SIZE	REV.	FILE NAME
1			A4	X1	902GEA1P00C20PA0(X07)



ECOMMENDED PCB CONFIGURATION

UNLESS OTHERWISE SPECIFIED TOLERANCE .X±0.20 .X±1' .XX±0.15 .XX±5' .XXX±0.10 .XXX±0.10		 CHANT SINCERE CO.,LTD TEL:886-02-86471251 FAX:886-02-86472362	
SCALE: AS SHOWN	UNIT: mm		
DRAWN: PEARL	02/26/2019	DRAWN NAME: SFP+ 1X1 ASSY WITH HEATSINK, PRESS FIT, WITH EMI SPRINGS 2/3	
CHECKED:		PRODUCT NO. 902GEA1P00C2XPA0	
APPROVED:		FILE NAME: 902GEA1P00C20PA0(X07)	
REV.	DESCRIPTION	DATE	 SIZE A4 REV. X1

1	2	3	4	5	6	7	8	9	10
---	---	---	---	---	---	---	---	---	----

