

SPECIFICATION

MATERIAL

Insulator: Thermoplastic, rated UL94V-0

Upper Contact: Copper Alloy

Lower Contact: Copper Alloy

CONTACT PLATING

Underplate: 50u"~100u" Nickel

Contact area: Selective gold

Solder tails area: 100u"~200u" Tin (Lead Free)

ELECTRICAL

Current rating: 0.5 A per contact

Rated voltage: 30 VDC per contact

Insulation resistance: 1000 Megaohms minimum

Dielectric withstanding voltage: 300 VDC for 1 minute

Storage Temperature: -20°C TO +85°C

Part no.

902 D H 20 B X T 07 0 1 C X

1 2 3 4 5 6 7 8 9 10 11 12

1.Series No.

902=SFP Series

2.D=SMT Type

3.Green option:

H=RoHS(Matte)(Halogen Free)

4.Contact number:

20=20 pin

5.Contact type:

B=Female

6.Contact area plating:

C=15u" Gold

D=30u" Gold

7.Solder tails plating:

T=100u"~200u" Tin

8.Apply type:

07=SFP+ 28G

9.Shell plating:

0=none

10.Type:

1=Standard

11.Packing Style:

C=Tape reel

12. Insulator color:

3=Black

C=Black+Date Code

UNLESS OTHERWISE SPECIFIED TOLERANCE	
ANG.	± 5°
0.	± 0.50
.0	± 0.30
.00	± 0.20

SCALE:	AS SHOWN	UNIT:	mm
--------	----------	-------	----

DRAWN	PEARL	19/06/2020
CHECKED	Jason_h	23/06/2020
APPROVED	Lin	06/07/2020

REV.	B
------	---



CHANT SINCERE CO.,LTD  
TEL:886-02-86471251 FAX:886-02-86472962

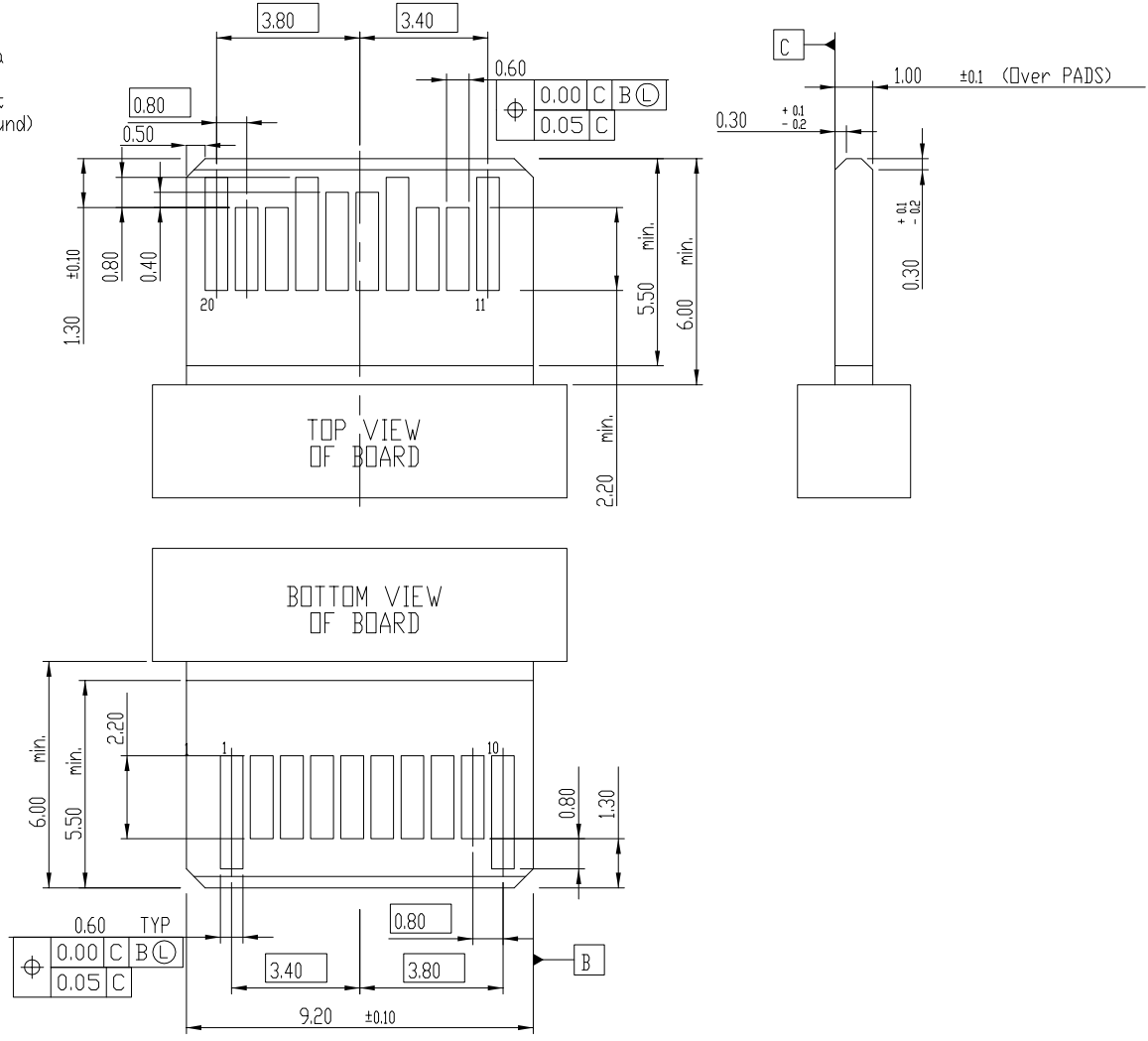
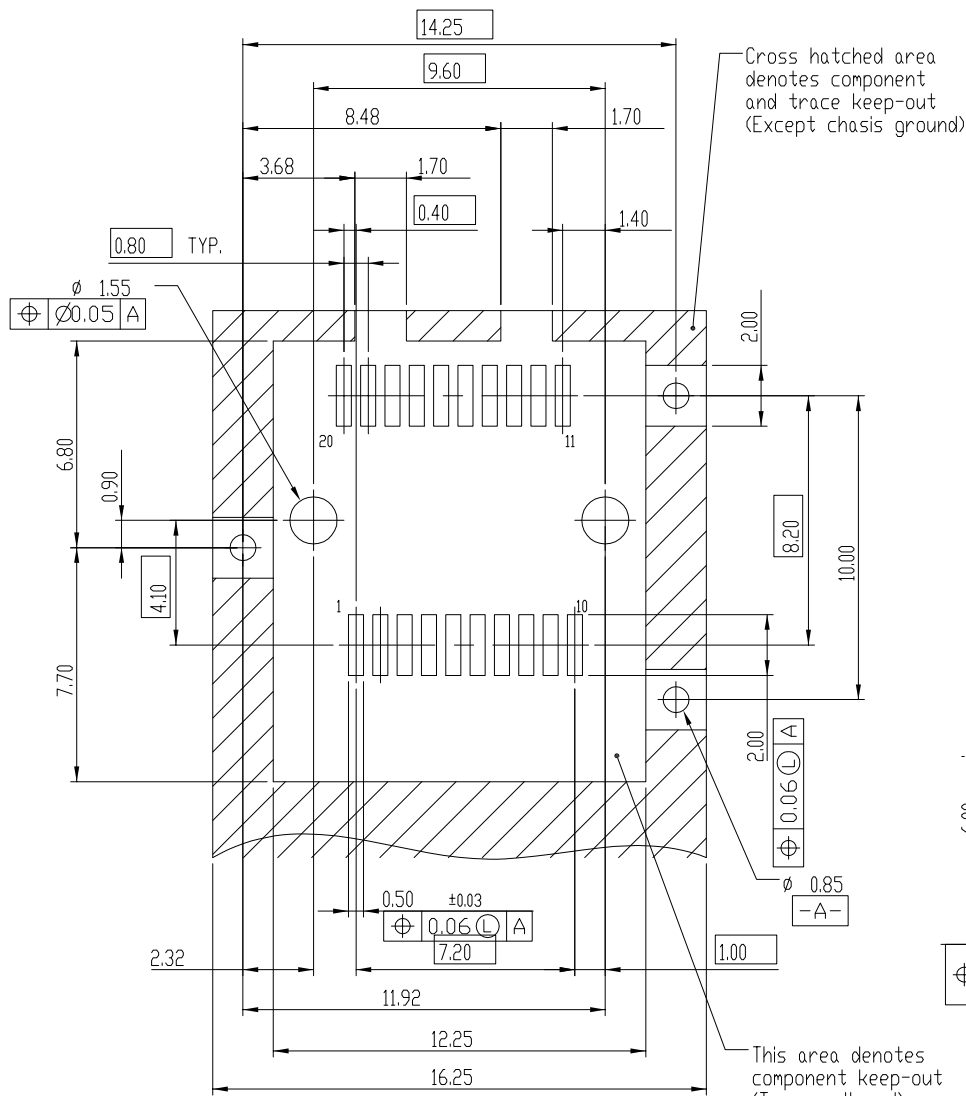
Title: (NDR-15007)

SFP+ 28G Connector 1/2

Part NO. 902DH20BXT0701CX C

Code: GC Customer:

Zone	Revision	DESCRIPTION	DATE	SIZE	REV.	Code	Customer:
1	2	3	4	5	6	7	8
1	2	3	4	5	6	7	8



UNLESS OTHERWISE SPECIFIED TOLERANCE	
ANG.	± 5°
0.	± 0.50
.0	± 0.30
.00	± 0.20



**CHANT SINCERE CO.,LTD**  
 TEL:886-02-86471251 FAX:886-02-86472962

SCALE:	AS SHOWN	UNIT:	mm
DRAWN	PEARL	19/06/2020	
CHECKED	Jason_h	23/06/2020	
APPROVED	Lin	06/07/2020	
		REV.	B

Title:	(NDR-15007)
SFP+ 28G Connector	2/2
Part NO.	902DH20BXT0701CX
Code:	GC
Customer:	

Zone	Revision	DESCRIPTION	DATE
1			
2			
3			
4			
5			
6			
7			
8			
9			
10			