

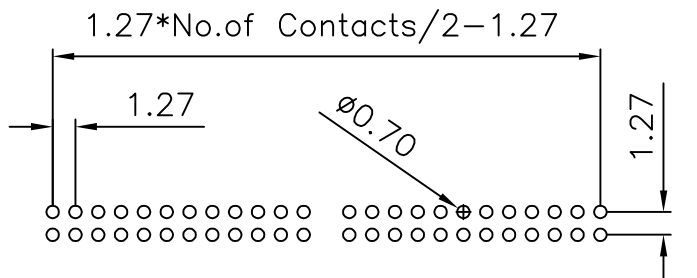
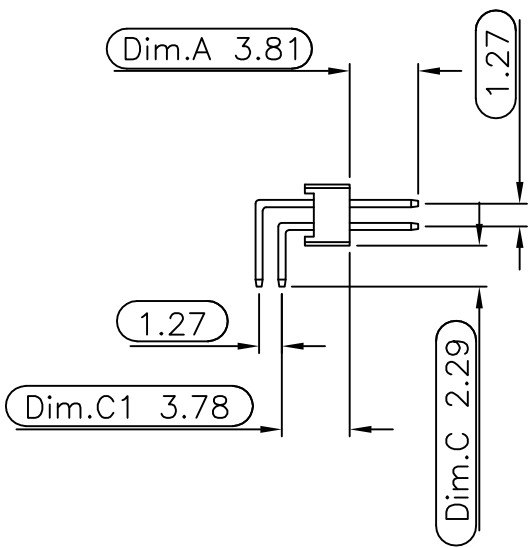
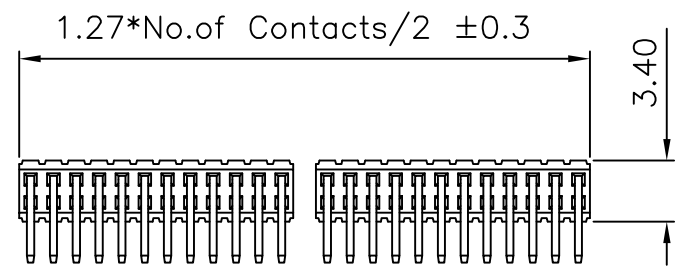
Current Rating: 1 Amps
 Insulator Resistance: 5000 Megohms min
 Contact Resistance: 20 m ohms max
 Dielectric Withstanding: 500 V AC
 Operating Temperature: -40° ~ +105° C
 Max Processing Temp: 230° C for 60 seconds
 Max Processing Temp: 260° C for 10 seconds
 Contact Material: Copper Alloy
 Standard: Brass
 Insulator Material: High Temperature
 Plastic,UL 94V-0

Standard:Gold Flash all over

PART NO.

714 A E XX X X E R 01 A F 3
 1 2 3 4 5 6 7 8 9 101112

- 1.SERIES NO.
- 2.TYPE: A=Standard
- 3.GREEN OPTION:
E=RoHS(Bright Plated)
- 4.CONTACT NUMBER:
04~80
- 5.CONTACT TYPE:
R=Male(PA6T)
N=Male(PA9T)
- 6.CONTACT AREA PLATING:
G=Gold Flash
- 7.ROW TYPE:
F=Dual Row
- 8.CONTACT OPTION:
R=Right Angle
- 9.CONTACT LENGTH:
01=01 TYPE
- 10.CONTACT OPTION:
A=Fully Loaded
- 11.PACKAGE OPTION:
F=BOX
- 12.INSULATOR COLOR:
3=Black



Recommended P.C. Board
Hole Layout

For SIP

UNLESS OTHERWISE SPECIFIED TOLERANCE	
.0	±0.30
.00	±0.20



CHANT SINCERE CO.,LTD
 TEL: 886-02-86471251 FAX: 886-02-86472962

SCALE: AS SHOWN	UNIT: mm
DRAWN PEARL	10/20/2017
CHECKED	/ /
APPROVED	/ /

DRAWN NAME:
PIN HEADER (PITCH: 1.27*1.27mm)
 PRODUCT NO. 714AEXXXFR01AF3

REV.	DESCRIPTION	DATE	SIZE A4	REV. X1	FILE NAME: 714AEXXXFR01AF3(C6)
------	-------------	------	---------	---------	--------------------------------