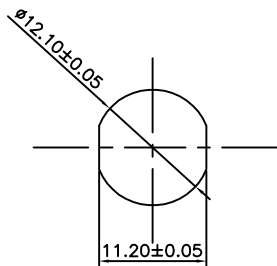


剖面圖 A-A



Recommended Panel
Cut- Out



SPECIFICATION

MATERIAL

Insulator: Thermal plastic, rated UL94V-0

Contacts: Copper Alloy

Contacts type: solder type

metal parts : copper with Ni plating

Contacts plating

Underplate: 50u"~100u" Nickel

Contact area: 1u" ~ 15u" Gold

Solder tails area: 1u" Gold

General Data

standard/Regulation: M12 connector IEC 61076-2-101

coding: A-standard

Number of position: 8

AWG Singal line: 24

Current rating: 2 Amps max.

Insulation resistance: 100 Mohms min @ 500 VDC

Degree of protection: IP 67

Temperature range: -20°C TO +85°C

Mating cycles: 100 insertions

Part no.

649 A E 08 M X S D2 N A X 3

1 2 3 4 5 6 7 8 9 10 11 12

1.SERIES NO.

649=M12 series

2. A-STANDAD

E=RoHS

3.GREEN OPTION:

08= 8PINS

4.CONTACT NUMBER:

M=MALE

5.CONTACT TYPE:

S=1u" GOLD

R=3u" GOLD

C=15u" GOLD

6.CONTACT AREA PLATING:

S=1u" GOLD

R=3u" GOLD

C=15u" GOLD

7.SOLDER TAILS AREA PLATING:

S=1u" GOLD

8.APPLY TYPE:

D2=M12 Through Pnel

9.SHELL PLATING:

N=Ni

10.CODING:

A=A Coding

11.PACKING STYLE:

A=TRAY

B=TAPE REEL

12.INSULATOR COLOR:

3=Black

UNLESS OTHERWISE
SPECIFIED TOLERANCE

ANG.	± 2°
.0	± 0.30
.00	± 0.20
.000	± 0.10

SCALE: AS SHOWN

UNIT: mm

DRAWN: PEARL

02/25/2014

CHECKED:

//

APPROVED:

//

DATE

SIZE

A4

REV. A



CHANT SINCERE CO.,LTD

TEL:886-02-86471251 FAX:886-02-86472962

DRAWN NAME:
M12-8 pin Male connector
Through panel mount

PRODUCT NO. 649AE08MXSD2NAX3

FILE NAME: 649AE08MXSD2NAX3

REV. DESCRIPTION

DATE

SIZE

A4

REV. A

FILE NAME: 649AE08MXSD2NAX3