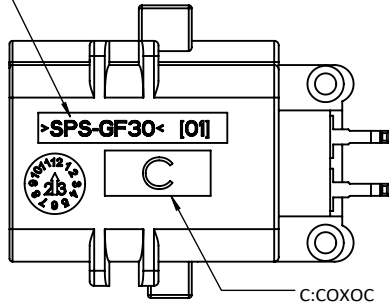
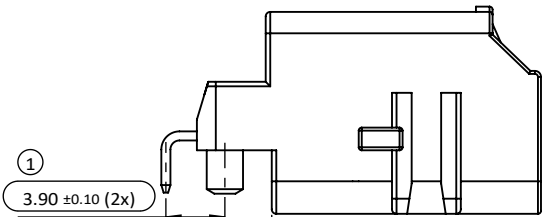


RoHS
compliant

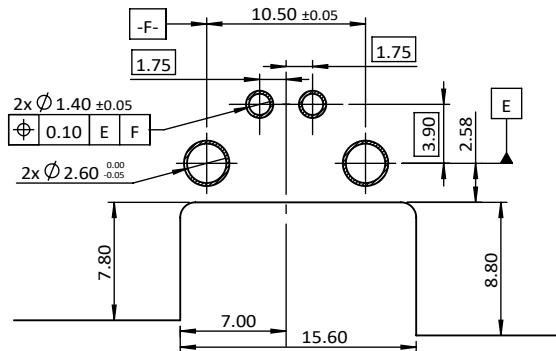
MATERIAL &
CAV NO.



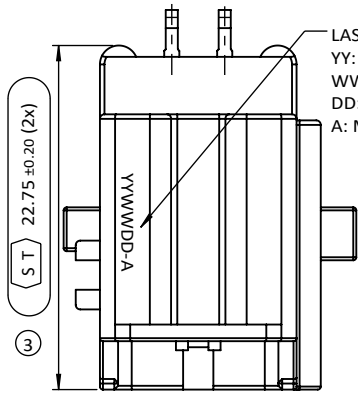
C:COXOC



① 3.90 ±0.10 (2x)
② 3.10 (2x)



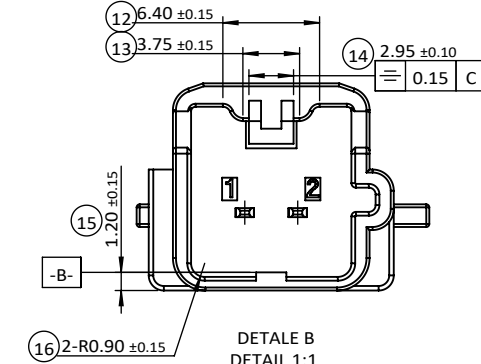
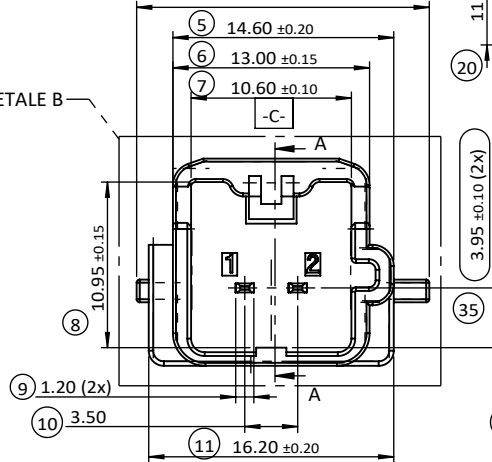
PCB TOP VIEW
RECOMMEND PCB LAYOUT
PCB THICKNESS:1.60 ±0.15



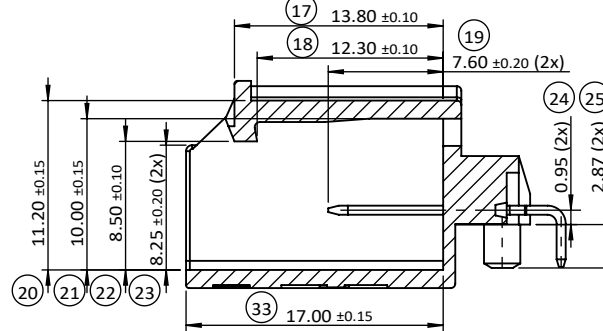
LASER MARKING:
YY: YEAR (19: 2019)
WW: WEEK (25: THE 25TH WEEK)
DD: (D1~D7: SUNDAY~SATURDAY)
A: MECHANICAL NUMBER

③ S T 22.75 ±0.20 (2x)

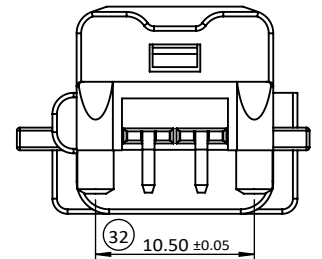
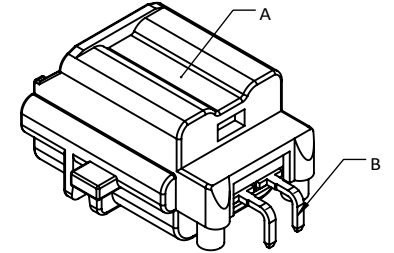
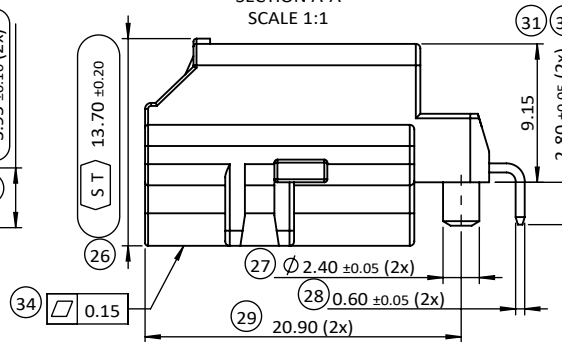
DETALE B



DETALE B
DETAIL 1:1



SECTION A-A
SCALE 1:1



SPECIFICATION
MATERIAL AND FINISH:
1. CODING HOUSING: SPS GF 30% UL94-V0 ; COLOR BLACK
2. CONTACT: COPPER ALLOY
3. PLATING: 1~3µm Sn(MATTE) OVER 1~2.2µm Ni
4. THE CAVITY , LOGO MAX HEIGHT 0.20mm ABOVE SURFACE
5. IF ANY DIMENSIONS OR DRAFT ANGLES WEREN'T MARKED.
PLS. REFER TO 3D DRAWING
6. REFLOW SOLDER CAPABLE TO 260°C/10s



UNLESS OTHERWISE SPECIFIED TOLERANCE	SIP
ANG. +5°	Crnk
0. +0.50	Cpk
.0 +0.30	
.00 +0.15	

SCALE: 2:1 UNIT: mm



CHANT SINCERE CO.,LTD

DRAWN: ANDY_GAU	21 Jun 2025	TITLE: PDR-23053
CHECKED: RITA_CHANG	23 Jun 2025	
APPROVED: MARK_YEN	23 Jun 2025	PART NO. 5450201001A

2P CONNECTOR	
CODE:	CUSTOMER:

ZONE	REVISION	DESCRIPTION	DATE	SIZE	SHEET	REV.	CODE:	CUSTOMER:
1	A	ECN-2508085(ANDY) X8 CHANGE TO A	19AUG2025	A4	1/1	A		