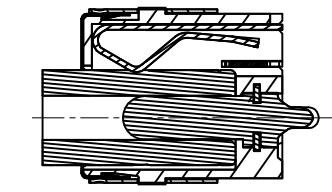
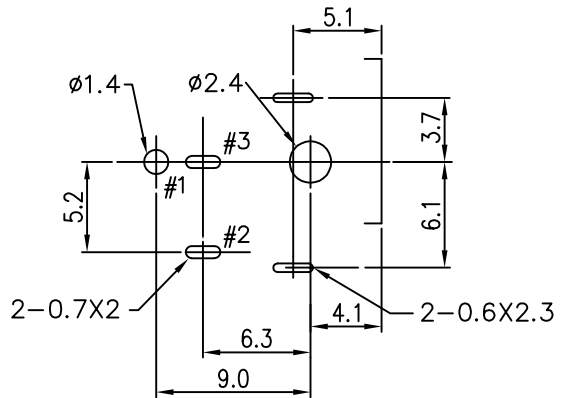
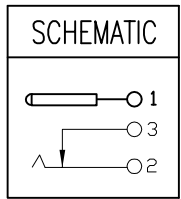


- SPECIFICATIONS:
- ELECTRICAL CHARACTERISTICS:
 - RATING: 12V 7A
 - CONTACT RESISTANCE: 30mΩ MAX.(INITIAL)
 - DIELECTRIC WITHSTANDING VOLTAGE: 500V AC FOR ONE MINUTE
 - INSULATION RESISTANCE: 100MΩ MIN. MEASURED BY 500V DC
 - MECHANICAL CHARACTERISTICS:
 - INSERTION FORCE : 0.3~3.0 KGF
 - WITHDRAWAL FORCE : 0.3~3.0 KGF
 - LIFE TEST: 5,000 CYCLES MIN.
 - FOR REFLOW SOLDERING LEAD-FREE PROCESS.

Part No.
416A X DCD020108MA
 1 2
 1.Series No.
 416A=DC Power Jack
 2.Green Option.
 E=RoHS



PLUG匹配示意图



T:1.6 Dimensions of PC board holes
 Tolerance : ±0.05(Printed-top view)



7	HOUSING	1	PA9T		UL-94V0(BLACK)
6	TERMINAL	1	SUS301	t=0.30±0.05	n/A
5	GROUNDING SPRING	1	SUS301	t=0.10±0.05	n/A
4	SHIELDING	1	C2680	t=0.20±0.05	Ni(50u"min) PLATED
3	CURVE PIECE	1	C2680	t=0.30±0.05	Sn(100u"min) PLATED
2	SPRING PIECE	1	C5191	t=0.30±0.05	Sn(100u"min) PLATED
1	PIN	1	H59(COPPER ALLOY)		Ni(50u"min) PLATED
LTR	PART NAME	QTY	MATERIAL	REMARK	

UNLESS OTHERWISE SPECIFIED TOLERANCE
±0.3

SCALE: AS SHOWN UNIT: mm

DRAWN Shion 10/06/2017

CHECKED

APPROVED

PRODUCT NO. 416AEDCD020108MA

FILE NAME: 416AEDCD020108MA(J11)

OXOC
CHANT SINCERE CO., LTD
 TEL:886-02-86471251 FAX:886-02-86472962

DC POWER JACK

REV.	DESCRIPTION	DATE	SIZE	REV.
1			A4	X1