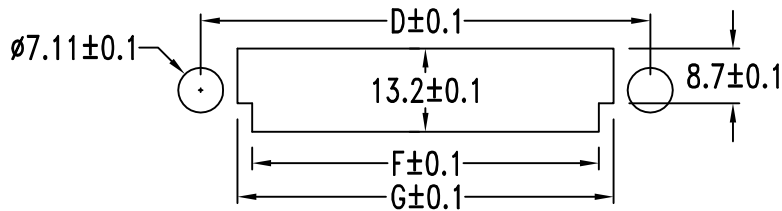
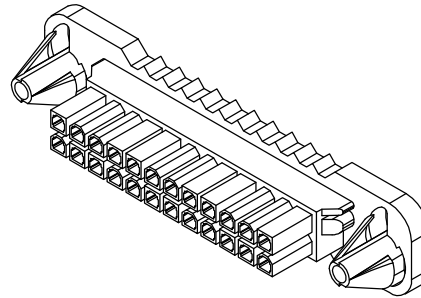
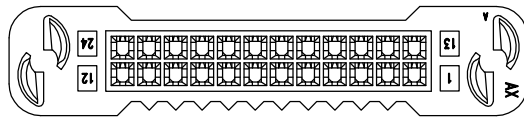
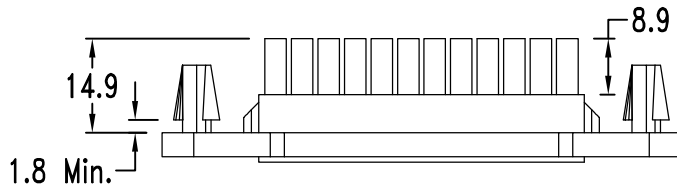
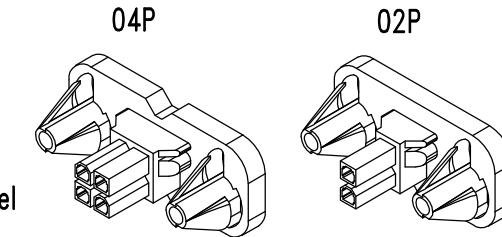


Dimensional Information (mm)

POSITION	Dim. A	Dim. B	Dim. C	Dim. D	Dim. E	Dim. F	Dim. G
2		5.4	10.1	25.0	36.0	8.7	13.4
4	4.2	9.6	14.3	29.2	40.2	12.9	17.6
6	8.4	13.8	18.5	33.4	44.4	17.1	21.8
8	12.6	18.0	22.7	37.6	48.6	21.3	26.0
10	16.8	22.2	26.9	41.8	52.8	25.5	30.2
12	21.0	26.4	31.1	46.0	57.0	29.7	34.4
14	25.2	30.6	35.3	50.2	61.2	33.9	38.6
16	29.4	34.8	39.5	54.4	65.4	38.1	42.8
18	33.6	39.0	43.7	58.6	69.6	42.3	47.0
20	37.8	43.2	47.9	62.8	73.8	46.5	51.2
22	42.0	47.4	52.1	67.0	78.0	50.7	55.4
24	46.2	51.6	56.3	71.2	82.2	54.9	59.6



Recommended Panel Cut-out for 1.27±0.3mm thickness panel



Features:

- Material UL 94V-0
- Accepts 313A(D101~03)Female terminal
- Mates with 312A(D105)Female housings

Specification:

- Voltage rating: 600V AC, DC ( R.M.S. )
- Current rating and wire size:

Ampere Wire	Maximum current rating ( Amperes )			
	Ckt Size 2	4, 6	8, 10	12~24
AWG #16	9	8	7	6
AWG #18	7	6	5	4
AWG #20	6	5	4	4
AWG #22	5	4	4	4
AWG #24	4	3	3	3
AWG #26	2	1	1	1
AWG #28	1	1	1	1

- Insulation resistance: DC 500V 1000MΩ Min.
- Dielectric withstanding voltage: 1500V AC/minute
- Ambient temperature range: -40°C ~ 105°C  
( including temperature rise )

PART NO.

312 A E XX M B 0 D1 0 5 D 1  
1 2 3 4 5 6 7 8 9 101112

- SERIES NO.
- TYPE A=Standard  
E=RoHS
- CONTACT NO. 02~24
- CONTACT TYPE M=Male  
B=Dual Row
- FILL IT WITH "0"
- PITCH OPTION D1=4.2mm
- PROCESS OPTION 5=TYPE 3
- PACKAGE OPTION D=Bag
- INSULATOR COLOR 1=White

UNLESS OTHERWISE SPECIFIED TOLERANCE		 <b>CHANT SINCERE CO., LTD</b> TEL:886-02-86471251 FAX:886-02-86472962
.0	±0.40	
.00	±0.25	SCALE: AS SHOWN UNIT: mm
.000	±0.08	DRAWN PEARL 10/04/13
DRAWN PEARL 10/04/13		DRAWN NAME: Wafer Housing Pitch
CHECKED / /		PRODUCT No. 312AEXXMBOD105D1
APPROVED / /		FILE NAME: 312AEXXMBOD105D1(W3)

REV.	DESCRIPTION	DATE	SIZE	REV.
1			A4	X1