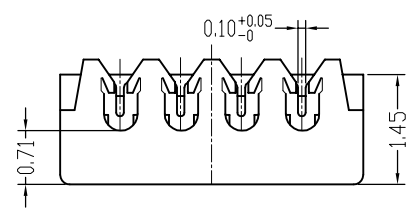
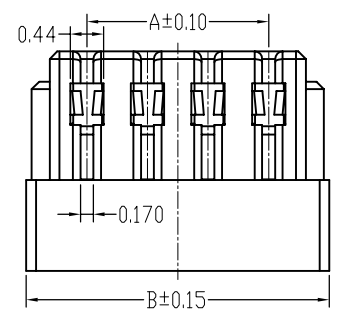
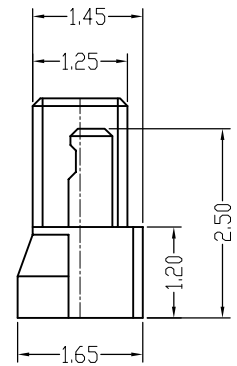
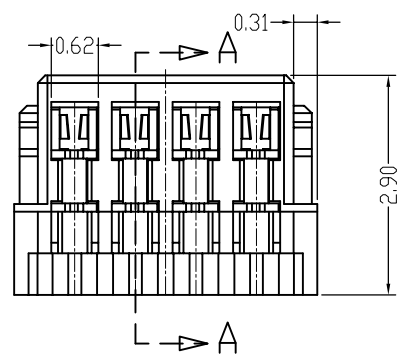
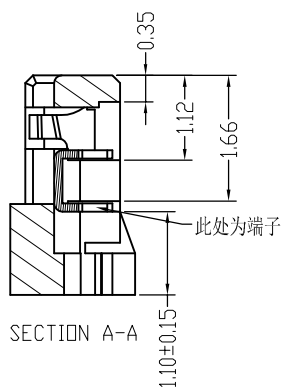
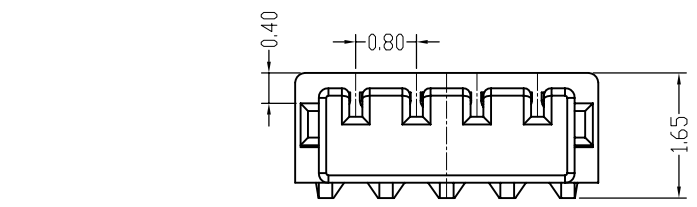


NOTES:
 1.MATERIAL:
 HOUSING:LCP UL94-V0
 CONTACTS:PHOSPHOR BRONZE
 2.PLATING:
 CONTACT: GOLD OR TIN OVER NICKEL
 3.RATING:
 CURRENT RATING: 0.5A AC/DC
 VOLTAGE RATING: 30V AC/DC
 TEMPERATURE RANGE: -25°C~+85°C;

PART NO. $\frac{312}{1} \frac{A}{2} \frac{E}{3} \frac{XX}{4} \frac{F}{5} \frac{A}{6} \frac{0}{7} \frac{01}{8} \frac{0}{9} \frac{0}{10} \frac{D}{11} \frac{1}{12}$

- | | |
|--------------------|--------------------|
| 1.SERIES NO. | 8.PITCH OPTION |
| 2.TYPE A=Standard | 01=0.8mm |
| 3.GREEN OPTION | 9.FILL IT WITH "0" |
| E=RoHS | 10.PROCESS OPTION |
| 4.CONTACT NO. | 0=NON Distribution |
| 02~20 | 11.PACKAGE OPTION |
| 5.CONTACT TYPE | D=Bag |
| F=Female | 12.INSULATOR COLOR |
| 6.ROW TYPE | 1=White |
| A=Single Row | |
| 7.FILL IT WITH "0" | |



PART NO	DIMENSION MM	
	A	B
2P	0.8	2.4
3P	1.6	3.2
4P	2.4	4.0
5P	3.2	4.8
6P	4.0	5.6
7P	4.8	6.4
8P	5.6	7.2
9P	6.4	8.0
10P	7.2	8.8

PART NO	DIMENSION MM	
	A	B
11P	8.0	9.6
12P	8.8	10.4
13P	9.6	11.2
14P	10.4	12.0
15P	11.2	12.8
16P	12.0	13.6
17P	12.8	14.4
18P	13.6	15.2
19P	14.4	16.0
20P	15.2	16.8

UNLESS OTHERWISE SPECIFIED TOLERANCE	
.0	±0.15
.00	±0.10
.000	±0.05
SCALE: AS SHOWN	UNIT: mm
DRAWN PEARL	10/04/13
CHECKED	/ /
APPROVED	/ /
SIZE A4	REV. X1



CHANT SINCERE CO., LTD
 TEL:886-02-86471251 FAX:886-02-86472962

DRAWN NAME:
 Wafer Housing Pitch 0.8mm
 PRODUCT NO. 312AEXXFA00100D1
 FILE NAME: 312AEXXFA00100D1(W3)

REV.	DESCRIPTION	DATE