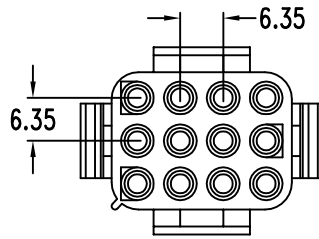
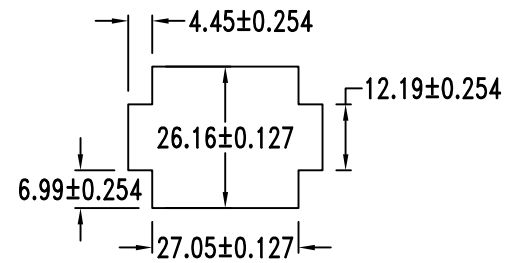
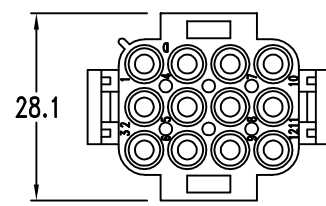
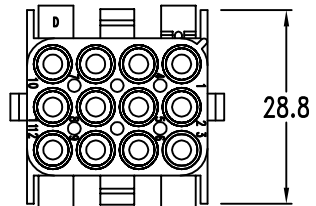
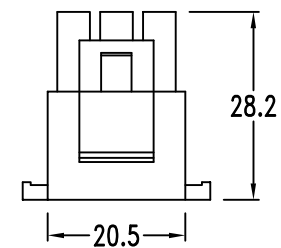
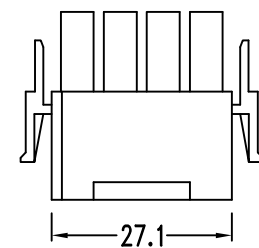
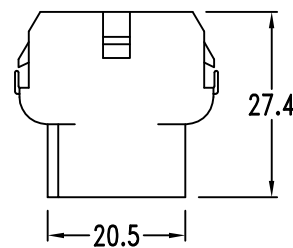
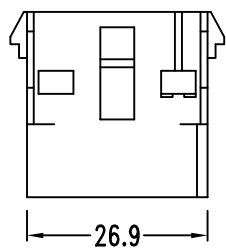


FEMALE



MALE



&& Panel must be punched so that housing enters panel in same direction as the punch.

Features:

- Integrally molded polarization
- Material: UL 94V-0
- Accepts 313A(F101~03) terminals
- Friction lock
- Standard color: Nature
- Recommended panel thickness: .030" ~ .090"(0.762 ~ 2.286mm)


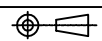
Specifications:

- Current rating: 11A
- Voltage rating: 600V
- Insulation resistance: 1000MΩ Min.
- Dielectric withstanding voltage: 5000V AC/minute
- Ambient temperature range: -55°C ~ 105°C

PART NO.

312 A E 12 X C 0 F1 0 0 D 9  
1 2 3 4 5 6 7 8 9 10 11 12

- |                    |                    |
|--------------------|--------------------|
| 1.SERIES NO.       | 8.PITCH OPTION     |
| 2.TYPE A=Standard  | F1=6.35mm          |
| 3.GREEN OPTION     | 9.FILL IT WITH "0" |
| E=RoHS             | 10.PROCESS OPTION  |
| 4.CONTACT NO.      | 0=NON Distribution |
| 12                 | 11.PACKAGE OPTION  |
| 5.CONTACT TYPE     | D=Bag              |
| M=Male             | 12.INSULATOR COLOR |
| F=Female           | 9=Transparency     |
| 6.ROW TYPE         |                    |
| C=Three Row        |                    |
| 7.FILL IT WITH "0" |                    |

UNLESS OTHERWISE SPECIFIED TOLERANCE		 <b>CHANT SINCERE CO., LTD</b> TEL:886-02-86471251 FAX:886-02-86472962	
.0	±0.40		
.00	±0.25		
.000	±0.08		
SCALE: AS SHOWN	UNIT: mm	DRAWN NAME: Wafer Housing Pitch 6.35mm PRODUCT No. 312AE12XC0F100D9 FILE NAME: 312AE12XC0F100D9(W3)	
DRAWN PEARL	10/04/13		
CHECKED	/ /		
APPROVED	/ /		
REV.	DESCRIPTION	DATE	 SIZE A4 REV. X1