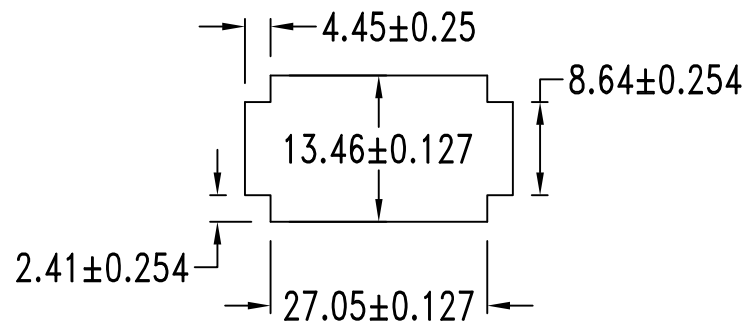


MALE

FEMALE



&& Panel must be punched so that housing enters panel in same direction as the punch.

Features:

- Integrally molded polarization
- Material: UL 94V-0
- Accepts .25"(6.35mm) crimp type terminals 313A(F101~03)
- Friction lock
- Standard color: Nature
- Recommended panel thickness: .030" ~ .090"(0.762 ~ 2.286mm)


Specifications:

- Current rating: 13A
- Voltage rating: 600V
- Insulation resistance: 1000MΩ min.
- Dielectric withstanding voltage: 5000V AC/minute
- Ambient temperature range: -55°C ~ 105°C

PART NO.

312 A E 04 X A 0 F1 0 0 D 9
1 2 3 4 5 6 7 8 9 10 11 12

- | | |
|--------------------|--------------------|
| 1.SERIES NO. | 8.PITCH OPTION |
| 2.TYPE A=Standard | F1=6.35mm |
| 3.GREEN OPTION | 9.FILL IT WITH "0" |
| E=RoHS | 10.PROCESS OPTION |
| 4.CONTACT NO. | 0=NON Distribution |
| 04 | 11.PACKAGE OPTION |
| 5.CONTACT TYPE | D=Bag |
| M=Male | 12.INSULATOR COLOR |
| F=Female | 9=Transparency |
| 6.ROW TYPE | |
| A=Single Row | |
| 7.FILL IT WITH "0" | |

UNLESS OTHERWISE SPECIFIED TOLERANCE		 CHANT SINCERE CO., LTD TEL:886-02-86471251 FAX:886-02-86472962
.0	±0.40	
.00	±0.25	
.000	±0.08	
SCALE: AS SHOWN	UNIT: mm	
DRAWN PEARL	10/04/13	DRAWN NAME: Wafer Housing Pitch
CHECKED	/ /	6.35mm
APPROVED	/ /	PRODUCT NO: 312AE04XA0F100D9
		FILE NAME: 312AE04XA0F100D9(W3)

REV.	DESCRIPTION	DATE
1		
2		
3		
4		
5		
6		
7		

SIZE A4 REV. X1