

**Features:**

- Integrally molded polarization
- Material: UL 94V-0
- Accepts .25"(6.35mm) crimp type terminals 313A(F101~03)
- Friction lock
- Standard color: Nature
- Recommended panel thickness: .030" ~ .090"(0.762 ~ 2.286mm)

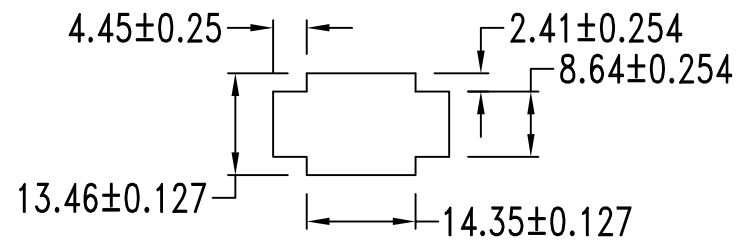
**Specifications:**

- Current rating: 13A
- Voltage rating: 600V
- Insulation resistance: 1000MΩ min.
- Dielectric withstanding voltage: 5000V AC/minute
- Ambient temperature range: -55°C ~ 105°C


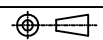
PART NO.

312 A E 02 X A 0 F1 0 0 D 9  
1 2 3 4 5 6 7 8 9 10 11 12

- |                                      |   |
|--------------------------------------|---|
| 1.SERIES NO.                         | 8.PITCH OPTION                          |
| 2.TYPE A=Standard                    | F1=6.35mm                               |
| 3.GREEN OPTION<br>E=RoHS             | 9.FILL IT WITH "0"                      |
| 4.CONTACT NO.<br>02                  | 10.PROCESS OPTION<br>0=NON Distribution |
| 5.CONTACT TYPE<br>M=Male<br>F=Female | 11.PACKAGE OPTION<br>D=Bag              |
| 6.ROW TYPE<br>A=Single Row           | 12.INSULATOR COLOR<br>9=Transparency    |
| 7.FILL IT WITH "0"                   |   |



&& Panel must be punched so that housing enters panel in same direction as the punch.

UNLESS OTHERWISE SPECIFIED TOLERANCE		 <b>CHANT SINCERE CO., LTD</b> TEL:886-02-86471251 FAX:886-02-86472962	
.0	±0.40		
.00	±0.25		
.000	±0.08		
SCALE: AS SHOWN	UNIT: mm	DRAWN NAME: Wafer Housing Pitch 6.35mm PRODUCT NO: 312AE02XA0F100D9 FILE NAME: 312AE02XA0F100D9(W3)	
DRAWN PEARL	10/04/13		
CHECKED	/ /		
APPROVED	/ /		
REV.	DESCRIPTION	DATE	 SIZE A4 REV. X1

REV.	DESCRIPTION	DATE
1		
2		
3		
4		
5		
6		
7		