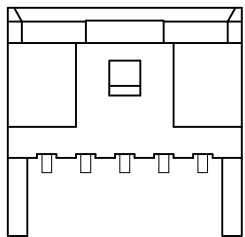
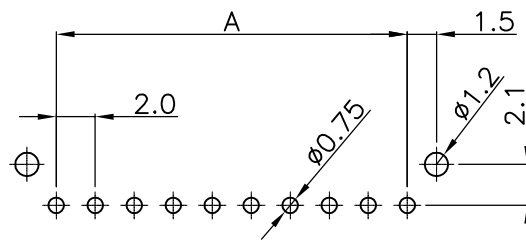
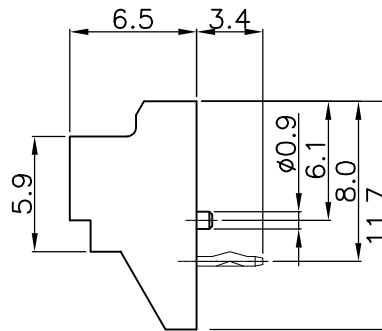
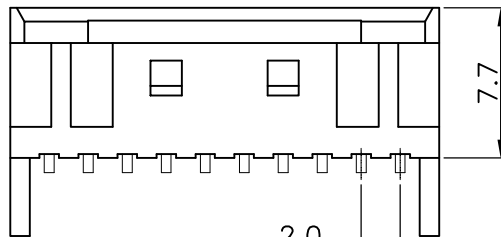


PIN 1

2~9P



10~15P



RECOMMENDED P.C.B LAYOUT(TOP VIEW)
TOLERANCES: ±0.05mm

Material: Glass-filled PBT, UL 94V-0, White
Conductor: Brass
Mate with 312A(B10X)

SPECIFICATIONS:

Current Rating: 3A AC/DC (Max) AWG#22
Voltage Rating: 250V AC/DC
Contact Resistance: 20mΩ Max
Insulation Resistance: 1000mΩ Min
Withstand Voltage: 800V AC/Minute
Pin Material: Brass / Tin-Plated
Temperature Range: -25°C ~ +85 °C

PART NO.

311 A E XX M A T B1 R 4 D 1
1 2 3 4 5 6 7 8 9 10 11 12

- | | |
|-------------------|--------------------|
| 1.SERIES NO. | 8.PITCH OPTION |
| 2.TYPE D=DIP | B1=2.0mm |
| 3.GREEN OPTION | 9.CONTACT OPTION |
| E=RoHS | R=Right Angle |
| 4.CONTACT NO. | 10.PROCESS OPTION |
| 02~15 | 4=TYPE4 |
| 5.CONTACT TYPE | 11.PACKAGE OPTION |
| M=Male | D=Bag |
| 6.ROW TYPE | 12.INSULATOR COLOR |
| A=Single Row | 1=White |
| 7.CONTACT PLATING | |
| T=Tin Plated | |

POSITION	Dim. A	Dim. B
2	2.00	6.00
3	4.00	8.00
4	6.00	10.00
5	8.00	12.00
6	10.00	14.00
7	12.00	16.00
8	14.00	18.00
9	16.00	20.00
10	18.00	22.00
11	20.00	24.00
12	22.00	26.00
13	24.00	28.00
14	26.00	30.00
15	28.00	32.00

UNLESS OTHERWISE SPECIFIED TOLERANCE	
X.	±2
.0	±0.30
.00	±0.20
.000	±0.10

SCALE: AS SHOWN	UNIT: mm
DRAWN PEARL	10/17/13
CHECKED	/ /
APPROVED	/ /

OXOC

CHANT SINCERE CO., LTD
TEL:886-02-86471251 FAX:886-02-86472962

DRAWN NAME: WAFER Pitch 2.0mm

PRODUCT NO. 311AEXXMATB1R4D1

FILE NAME: 311AEXXMATB1R4D1(W3)

REV.	DESCRIPTION	DATE	SIZE	REV.
			A4	X1