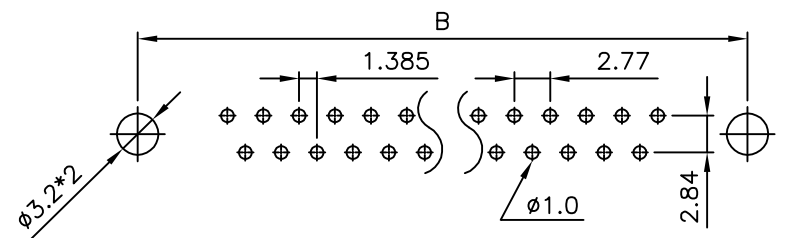
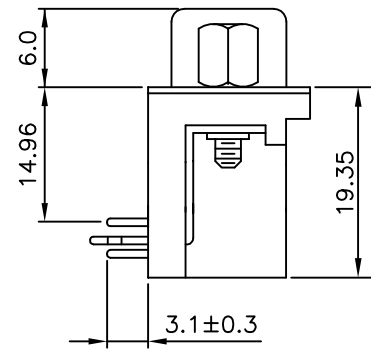
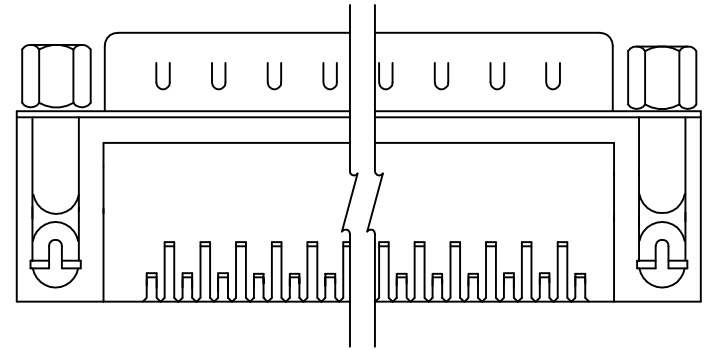


SPECIFICATION
MATERIAL
 Insulator: Thermal Plastic UL94V-0
 Contacts: Copper Alloy
 Shell: Steel
 Rivet,Boardlock: Copper Alloy
CONTACT PLATING
 Underplate: 50u"~100u" Nickel
 Contact Area: 1u"~30u" Selective Gold
 Solder Tails Area: 100u"~200u" Tin/Lead(Brighten Tin)or 100u"~200u" Tin/Lead Free(Brighten Tin)

ELECTRICAL
 Operation Voltage: 250 VAC Max.
 Current Rating: 3 Amps Max.
 Contact Resistance: 15 mohms Max.
 Insulation Resistance: 3000 Mohms Min @ 500 VDC
 Dielectric Withstanding Voltage: 1000 VAC / Minute
 Temperature Range: -55°C To +105°C
PART NO.

209 A X XX M X X A A X 3
 1 2 3 4 5 6 7 8 9 10 11

- 1.SERIES NO.
- 2.TYPE: A=Standard
- 3.ENVIRONMENT PROTECTION MATERIAL: E=RoHS
- 4.CONTACT NUMBER: 09 15 25 37
- 5.CONTACT TYPE: M=Male (Long Flange)
- 6.CONTACT AREA PLATING: G=Gold Flash
- 7.SHELL PLATING: P=Tin+Dimple
- 8.PROCESS OPTION: A=Boardlock
- 9.PARTS OPTION: A=Non rivet
- 10.PARTS DIMENSION C=Fixed Hex-Screws (4.8*11.8)
- 11.INSULATOR COLOR: 3=Black



RECOMMENDED P.C.B LAYOUT(TOP VIEW)
 TOLERANCES: ±0.05mm

POSITION	A	B	C
9M	16.92	25.00	30.8
15M	25.25	33.30	39.2
23M	35.90	44.30	50.3
25M	38.96	47.10	53.1
37M	55.42	63.50	69.4

UNLESS OTHERWISE SPECIFIED TOLERANCE			
ANG.	±5°		
0.	±0.5	CHANT SINCERE CO.,LTD TEL:886-02-86471251 FAX:886-02-86472962	
.0	±0.3		
.00	±0.2		
SCALE: AS SHOWN	UNIT: mm		
DRAWN	JOE	01/12/07	DRAWN NAME: D-SUB PCB RIGHT ANGLE FOOTPRINT: 13.84mm (0.590")
CHECKED	/	/	PRODUCT NO. 209AXXXMXXAAX3
APPROVED	/	/	FILE NAME: 209AKXXMXXAAC3
SIZE A4		REV. E	

REV.	DESCRIPTION	DATE	REV.	DESCRIPTION	DATE
1			1		
2			2		
3			3		
4			4		
5			5		
6			6		
7			7		