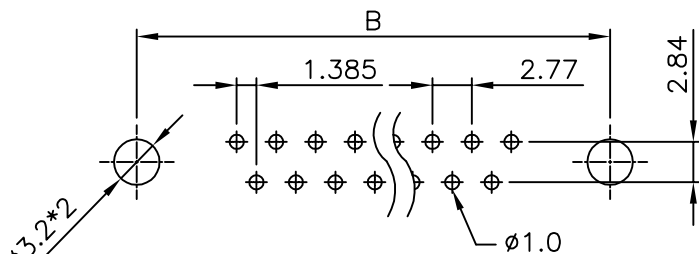


CONTACT LENGTH  
DIM. FOR "Y":

E	13.0mm
F	9.5mm

POSITION	A	B	C	D
9F	16.30	25.00	30.8	19.2
15F	24.60	33.30	39.2	27.7
19F	30.00	38.86	44.8	32.8
23F	35.30	44.30	50.3	38.3
25F	38.30	47.10	53.1	41.1
37F	54.80	63.50	69.4	57.3



RECOMMENDED P.C.B LAYOUT (TOP VIEW)  
TOLERANCES:  $\pm 0.05\text{mm}$

SPECIFICATION

MATERIAL

Insulator: Thermal Plastic UL94V-0

Contacts: Copper Alloy

Shell: Steel

Rivet, Boardlock: Copper Alloy

CONTACT PLATING

Underplated: 1u"~30u" Selective Gold Over 50u"~100u" Nickel ELECTRICAL

Operation Voltage: 250 VAC Max.

Current Rating: 3 Amps Max.

Contact Resistance: 15 mohms Max.

Insulation Resistance: 3000 Mohms Min @ 500 VDC

Dielectric Withstanding Voltage: 1000 VAC / Minute

Temperature Range: -55°C To +105°C

PART NO.

$\frac{204}{1} \frac{A}{2} \frac{X}{3} \frac{XX}{4} \frac{F}{5} \frac{X}{6} \frac{X}{7} \frac{A}{8} \frac{A}{9} \frac{X}{10} \frac{X}{11}$

1.SERIES NO.

2.TYPE

A=Standard

3.GREEN OPTION

E=RoHS

4.CONTACT NUMBER:

09 15 25 37

5.CONTACT TYPE:

F=Female

6.CONTACT PLATING:

G=Gold Flash

7.SHELL PLATING:

T=Tin Plated

8.PROCESS OPTION:

A=Thru. Hole

9.PARTS OPTION:

A=Non Accessories

10.CONTACT LENGTH:

DIM. OF "Y"

E=13.0mm

11.COLOR:

3=Black

UNLESS OTHERWISE SPECIFIED TOLERANCE	
0.	$\pm 0.5$
.0	$\pm 0.3$
.00	$\pm 0.2$

SCALE: AS SHOWN	UNIT: mm
DRAWN CHERRY	10/08/08
CHECKED	/ /
APPROVED	/ /
SIZE A4	REV. D



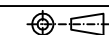
CHANT SINCERE CO., LTD  
TEL:886-02-86471251 FAX:886-02-86472962

DRAWN NAME:  
D-SUB PCB STRAIGHT MACHINED  
WIRE WRAP  
PRODUCT NO. 204AXXXFXXAAXX  
FILE NAME: 204AJXXFXXAAXX

REV.

DESCRIPTION

DATE



SIZE

REV. D

FILE NAME:

204AJXXFXXAAXX