

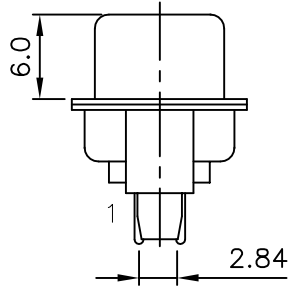
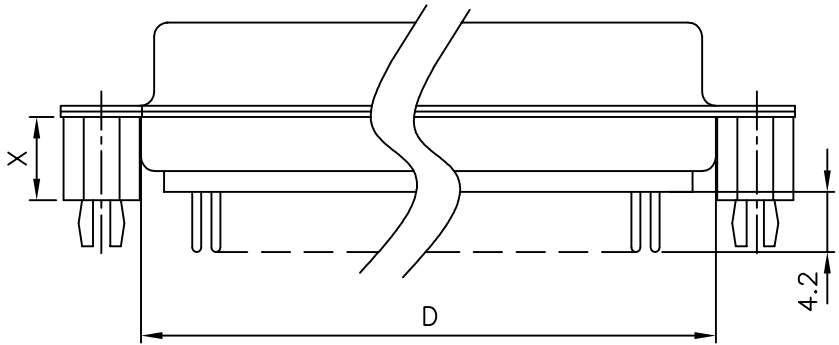
parts no.	DIM. a	DIM. b	inner thread
F	4.8	11.8	4#40
H	5.8	12.0	4#40

SPECIFICATION
MATERIAL
 Insulator: PBT, rated UL94V-0
 Contacts: Brass
 Shell: Steel
 Rivet, Boardlock: Copper Alloy
CONTACT PLATING
 Underplate: 50u"~100u" Nickel
 Contact area: 1u"~30u" Selective Gold
 Solder tails area: 100u"~200u" Tin Lead or 100u"~200u" Tin(Lead Free)

ELECTRICAL
 Operation voltage: 250 VAC max.
 Current rating: 3 Amps max.
 Contact resistance: 15 mohms max.
 Insulation resistance: 3000 Mohms min @ 500 VDC
 Dielectric withstanding voltage: 1000 VAC / minute
 Operating temperature: -55°C TO +105°C
 Part no.

203 A X XX X X X X X A 3
 1 2 3 4 5 6 7 8 9 10 11

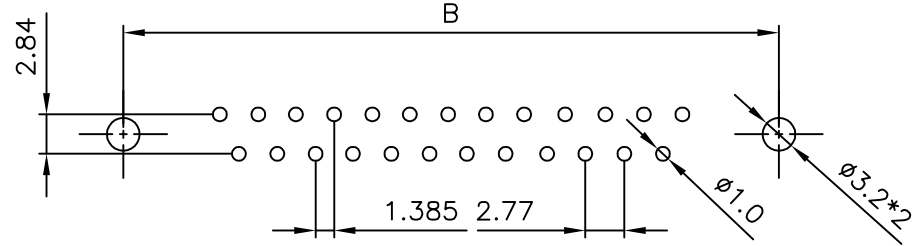
- 1.SERIES NO.
- 2.TYPE:
A=Standard
- 3.ENVIRONMENT PROTECTION
MATERIAL:
E=RoHS
- 4.CONTACT NUMBER:
09 15 23 37
- 5.CONTACT TYPE:
DIM. OF "Y"
F=Female(4.2mm)
- 6.CONTACT PLATING:
G=Gold Flash
- 7.SHELL PLATING:
T=Tin/Lead Free
- 8.PROCESS OPTION:
DIM. FOR "X"
I=5.8mm Boardlock(Z) Rivet
- 9.PARTS OPTION:
E=Rear Rivet
- 10.PARTS DIMENSION
A=Fully Loaded
- 11.INSULATOR:
3=Black



PROCESS OPTION

DIM. FOR "X"

I	5.8mm
R	6.5mm
S	5.0mm



RECOMMENDED P.C.B. LAYOUT(TOP VIEW)
 TOLERANCES:±0.05mm

POSITION	A	B	C	D
9F	16.30	25.00	30.8	19.2
15F	24.60	33.30	39.2	27.7
19F	30.00	38.86	44.8	32.8
23F	35.30	44.30	50.3	38.3
25F	38.30	47.10	53.1	41.1
37F	54.80	63.50	69.4	57.3

UNLESS OTHERWISE SPECIFIED TOLERANCE

ANG.	±5°
0.	±0.5
.0	±0.3
.00	±0.2



CHANT SINCERE CO., LTD
 TEL:886-02-86471251 FAX:886-02-86472962

SCALE: AS SHOWN	UNIT: mm
DRAWN CHERRY	11/09/07
CHECKED	/ /
APPROVED	/ /

DRAWN NAME:
D-SUB SOLDER
 PRODUCT NO. 203AXXXFXXXXA3

REV.	DESCRIPTION	DATE	SIZE	REV.	FILE NAME:
			A4	C	203AKXXFXXIEA3