

parts no.	DIM. a	DIM. b	inner thread
F	5.0	10.0	4#40
H	4.8	11.8	4#40
1	4.8	10.8	4#40
4	5.8	12.0	4#40

SPECIFICATION
MATERIAL
 Insulator: Thermal Plastic UL94V-0
 Contacts: Copper Alloy
 Shell: Steel
 Rivet,Boardlock: Copper Alloy
CONTACT PLATING
 Underplate: 50m Nickel
 Contact Area: 1m²~30m² Selective Gold
 Solder Tails Area: 100m² Tin/Lead
ELECTRICAL
 Operation Voltage: 250 VAC Max.
 Current Rating: 3 Amps Max.
 Contact Resistance: 15 mohms Max.
 Insulation Resistance: 3000 Mohms Min. @ 500 VDC
 Dielectric Withstanding Voltage: 1000 VAC / Minute
 Operating Temperature: -55°C TO +105°C
 Part no.

202 A X XX X X X X A X
 1 2 3 4 5 6 7 8 9 10 11

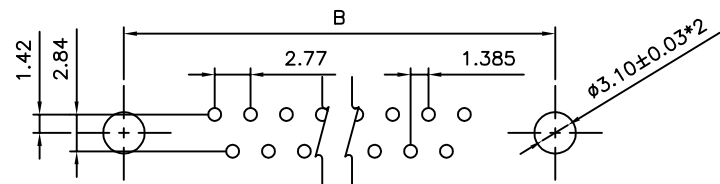
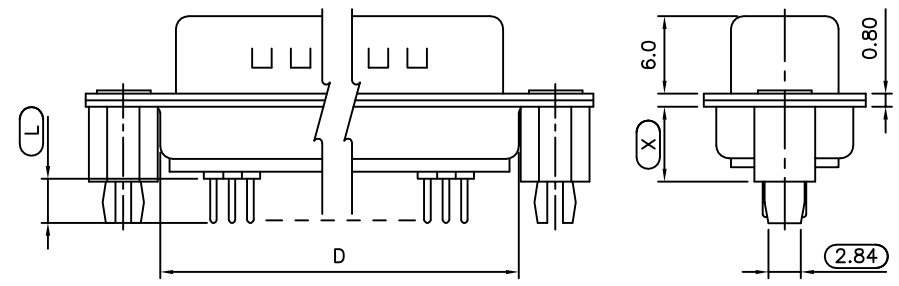
- 1.SERIES NO.
- 2.TYPE: A=Standard
- 3.GREEN OPTION
E=RoHS(Bright)
- 4.CONTACT NUMBER:
09 15 25 37
- 5.CONTACT TYPE:
M=Male(Length:4.1±0.5mm)
- 6.CONTACT AREA PLATING:
G=Gold Flash
S=Gold Flash (Selective)
P=Tin Plated+Dimple
- 8.PROCESS OPTION:
DIM. FOR "X"
- 9.PARTS OPTION:
E=Rear Rivet
- 10.CONTACT INSERTING OPTIN:
A=Fully Loaded
- 11.INSULATOR COLOR:
3=Black

CONTACT TYPE DIM. FOR "L":

M	4.1±0.5mm
A	3.15mm
E	2.1mm

PROCESS OPTION DIM. FOR "X":

1	5.8mm
S	5.0mm
1	8.7mm
2	10.0mm
5	8.0mm
6	6.7mm
17	5.8mm(Matte Tin)



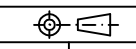
RECOMMENDED P.C.B LAYOUT (TOP VIEW)
 TOLERANCES: ±0.05mm

POSITION	A	B	C	D
9M	16.92	25.00	30.8	19.2
15M	25.25	33.30	39.2	27.7
25M	38.96	47.10	53.1	41.1
37M	55.42	63.50	69.4	57.3

For SIP

UNLESS OTHERWISE SPECIFIED TOLERANCE		
ANG.	±5°	
0.	±0.5	CHANT SINCERE CO.,LTD TEL:886-02-86471251 FAX:886-02-86472962
.0	±0.3	
.00	±0.2	
SCALE: AS SHOWN	UNIT: mm	
DRAWN PEARL	07/08/2015	DRAWN NAME: D-SUB PCB STRAIGHT
CHECKED	/ /	PRODUCT NO. 202AXXXXXXXXXXAX
APPROVED	/ /	FILE NAME: 202AKXXMXXIEAX

REV.	DESCRIPTION	DATE	REV.	DESCRIPTION	DATE
1			4		
2			5		
3			6		



SIZE A4

REV. K