



CHANT SINCERE CO., LTD.

CONCO

# PRODUCT GUIDE

CABLE / CONNECTOR / ACCESSORIES

- 📍 7F-2, No. 188, Sec. 3, Datong Rd., Xizhi Dist., New Taipei City 221, Taiwan (R.O.C)
- ☎ 886-2-8647-1251 (REP.)
- 📠 886-2-8647-1842, 886-2-8647-2962
- ✉ service@coxoc.com.tw



WEBSITE



LINKEDIN

# Company Profiles

## 公司簡介

Integrity

Innovation

Quality

Sustainability

Chant Sincere was founded in 1985. Our core management values are honesty, quality, innovation, and sustainability. We practice the core principles in design and manufacturing all connector & cable products. We integrated the R&D, tooling, assembly and quality control skills and constantly develop innovative products to meet the fast-changing requirements ( quality / cost / delivery / service ) of customers.

詮欣股份有限公司創立於1985年，秉持著『誠信務實、創新求進、品質至上、永續經營』的經營理念，專業設計並生產連接器及連接線。從產品研發設計、模具製造、生產組裝、品質控管等一貫化作業，不斷研究與創新，滿足客戶於品質、價格、交期及服務上的全面需求。

Chant Sincere provide a broad range of cable and connector families to deliver total solutions for customers. These products are widely used in many industries for example: Computing, Industrial & Automation, Telecommunication, Automotive, Waterproof, Consumer and Medical Industry. Our major products are I/O connector, Board to Board connector, Waterproof connector, Industrial Connector, Automotive connector, Memory Card connector and adaptor, High-Speed connector and cable, Audio & Video connector and Server, TV, Setup BOX, Car Infotainment, Smart Phone, Card Reader, Slot & Poker Machine, GPS, Outdoor Monitor, Medical Equipment.

詮欣產品線廣泛且多元，提供客戶完整解決方案，所生產的連接器(線)應用於電腦及PC週邊、工業、通訊、汽車、防水、消費性電子、醫療等產業，例如：筆記型電腦、桌上型電腦、平板電腦、伺服器、數位電視、電視機上盒、車用多媒體影音裝置、手機、讀卡機、電子博弈、衛星導航機、戶外監控設備、醫療器材。

Chant Sincere's quality control and manufacturing management system has earned high recognition from national organizations and customers. These include the "National Bedrock Award" and "Small Giant Award" from the Taiwan Connector maker competition and "Best Supplier awards" from Global customers.

Chant Sincere has gained the status of a global professional manufacturer of connectors and cables by providing products that go beyond the standard, with global patents and high value-adding services such as high-frequency and thermal-associated design. We are persistently improving our design and manufacturing technology, and actively collaborating with international partners.

詮欣以卓越的品質及製造能力，歷年來獲頒國家磐石獎及小巨人獎，並取得世界大廠信任贈予年度最佳供應商大獎。由於技術不斷精進，各項I/O連接器、板對板連接器、防水連接器、工業連接器、車用連接器、記憶卡連接器/轉接卡、通訊連接線、數據傳輸線、影音傳輸線...等產品均擁有多項國際專利認證，成為世界級之專業連接器製造及線材組裝廠商，並提供高頻解決方案和散熱解決方案等加值服務。

# Core Competence

## 詮欣競爭優勢



41 Years Manufacture Experience  
41年專業連接器製造



Precision Tooling Center  
精密模具加工中心



ODM/OEM Capability  
國際大廠OEM/ODM經驗



Wide Range of Product Line  
多樣化及齊全產品線



Automation Capability  
自動化設計及製造能力



Global Association & Certification  
具備各項國際協會認證



Vertical Integration (Design/Tooling/Manufacturing/Test)  
製程垂直整合(一貫化作業)





## Quality System


ISO 14064-1 / ISO 9001 / ISO 14001 / IATF 16949 / ISO 13485


# Index by Category

## 分類索引

 <b>ADAS</b>	<b>Automotive</b> HSD FAKRA Mini FAKRA CAR EtherNet Automotive Type C MQSHeader Adaptor Test Fixture Board P01	<b>Board to Board</b> Pin Header Female Header Box Header Mini DIN Jack High Speed Board to Board P37
--	---	---

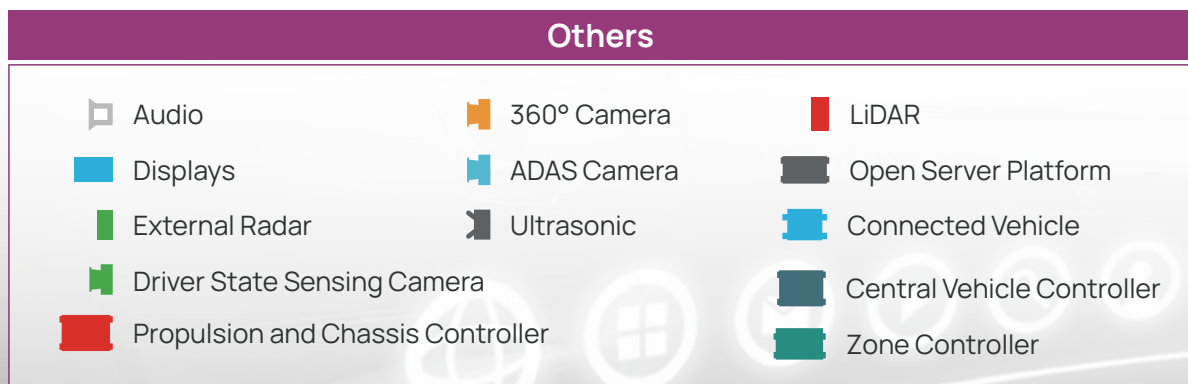
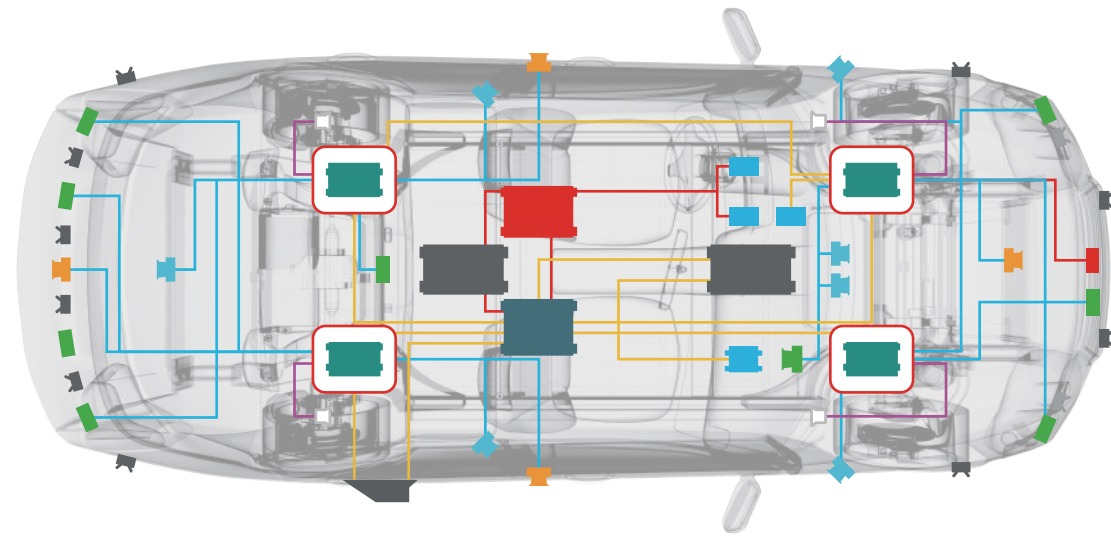
 <b>Metaverse</b>	<b>Consumer Electronic</b> USB 2.0 USB 3.0 USB Type C USB4 JACK SD + CF Combo SD CFexpress Compact Flash PCMCIA CFast FPC DVI HDMI DisplayPort P21	<b>Cable / Smart Cable</b> USB 2.0 Cable USB 3.0 Cable USB Type C Cable USB4 Cable DisplayPort Cable HDMI Cable Flat Cable Smart Cable P27 <b>OTG Series</b> OTG Cable OTG Reader USB Type C Adapter USB Type C Reader P31	<b>Board to Board</b> Pin Header Female Header Box Header Mini DIN Jack High Speed Board to Board P37
---	--	---	---

 <b>Cloud Center</b>	<b>Telecom</b> DIN 41612 RJ45 SFP QSFP QSFP-DD OSFP Mini-SAS HD OCulink Slimline Low profile Slimline Gen-Z P13	<b>Consumer Electronic</b> USB 2.0 USB 3.0 USB Type C USB4 JACK SD + CF Combo SD CFexpress Compact Flash PCMCIA CFast FPC DVI HDMI DisplayPort Adapter P21	<b>Cable / Smart Cable</b> USB 2.0 / USB 3.0 Cable USB Type C / USB4 Cable DisplayPort Cable HDMI Cable Flat Cable Smart Cable P27 <b>PC Peripheral</b> D-Sub Box Header Ejector Header Wafer SCART SCSI II P33
--	---	---	--

 <b>AIoT</b>	<b>Waterproof</b> Waterproof D-Sub M5 / M8 / M12 / M16 P17	<b>Cable / Smart Cable</b> USB 2.0 Cable USB 3.0 Cable USB Type C Cable USB4 Cable DisplayPort Cable HDMI Cable Flat Cable Smart Cable P27 <b>OTG Series</b> OTG Cable OTG Reader USB Type C Adapter USB Type C Reader P31	<b>PC Peripheral</b> D-Sub Box Header Ejector Header Wafer SCART SCSI II P33 <b>Board to Board</b> Pin Header Female Header Box Header Mini DIN Jack High Speed Board to Board P37
--	---	---	--

# Automotive

## Applications

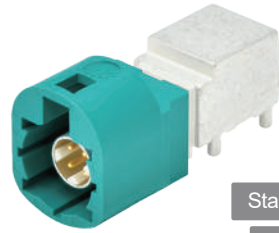


Vehicle safety systems are constantly evolving, leading automakers to envision a world where vehicle collisions are a thing of the past. We are here to help you design adaptable advanced driver assistance systems (ADAS) for a safer, more automated driving experience. Our connection system helps you design efficient ADAS functionality for any vehicle.

車輛安全系統在不斷發展，汽車製造商憧憬著一個車輛不再發生碰撞的世界。我們能隨時幫助您設計適應性強的高級駕駛輔助系統 (ADAS)，以實現更安全及更自動化的駕駛體驗。我們的連接系統可幫助您為任何車輛設計高效的 ADAS 功能。



**543**  
HSD Plug Vertical Type  
Coding:A,B,C,D,E,F,Z  
Positions:04



**543**  
HSD Plug R/A Type Shell Height=8.55  
Coding:A,B,C,D,E,F,Z  
Positions:04

Standard  
Key Up



**543**  
HSD Plug R/A Type Shell Height=8.55  
Coding:G,H,J,K,L,M,O  
Positions:04

Standard  
Key Down



**701**  
SMB-CM to FAKRA Plug Adapter  
Coding:A,F,Z  
Positions:01

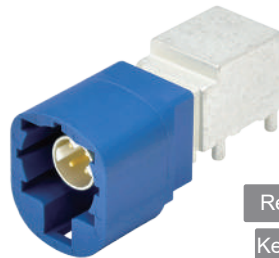
Un-Mated Waterproof IP Rating



**518**  
SMB-CM Board Mount FAKRA Connector  
Positions:01

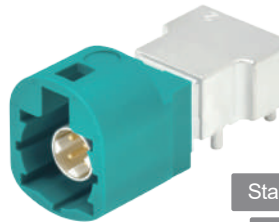


**518**  
SMB Jack DIP 15.86mm  
Position:01



**543**  
HSD Plug R/A Type Shell Height=8.55  
Coding:A,B,C,D,Z  
Positions:04

Reverse  
Key Down



**543**  
HSD Plug R/A Type Shell Height=6.85  
Coding:A,B,C,D,E,F,Z  
Positions:04

Standard  
Key Up



**543**  
HSD Plug R/A Type Shell Height=6.85  
Coding:G,H,J,K,L,M,O  
Positions:04

Standard  
Key Down



**541**  
Floating Socket SMT  
Position:01



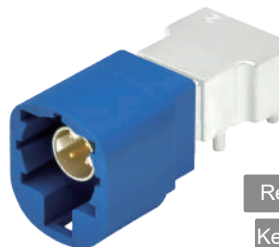
**541**  
FAKRA Plug R/A Middle Type, CH=0.24  
Coding:A,B,C,D,E,F,G,H,I,K,L,M,N,Z  
Positions:01

Key Up



**541**  
FAKRA Plug R/A Middle Type, CH=0.24  
Coding:A,B,C,D,E,F,G,H,I,K,L,M,N,Z  
Positions:01

Key Down



**543**  
HSD Plug R/A Type Shell Height=6.85  
Coding:A,B,C,D  
Positions:04

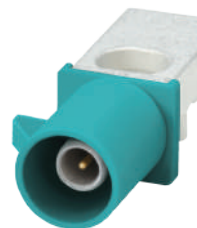
Reverse  
Key Down



**143**  
HSD Jack Cable Straight Type  
Coding:A,B,C,D,E,F,Z  
Positions:04

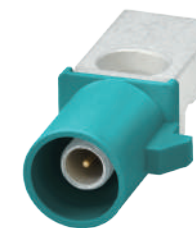


**143**  
HSD Jack to USB 2.0 Cable A/M STR Type  
Coding:A,B,C,D,E,F,Z  
Positions:04



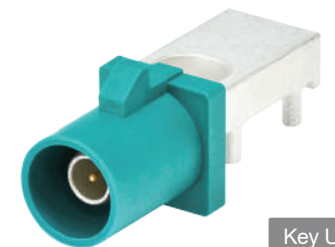
**541**  
FAKRA Plug R/A Middle Type, CH=0.24  
Coding:A,B,C,D,E,F,G,H,I,K,L,M,N,Z  
Positions:01

Key Left



**541**  
FAKRA Plug R/A Middle Type, CH=0.24  
Coding:A,B,C,D,E,F,G,H,I,K,L,M,N,Z  
Positions:01

Key Right



**541**  
FAKRA Plug R/A Middle Type, CH=0.33  
Coding:A,B,C,D,E,F,G,H,I,K,L,M,N,Z  
Positions:01

Key Up



**143**  
HSD Jack to USB 2.0 Cable A/F STR Type  
Coding:A,B,C,D,E,F,Z  
Positions:04

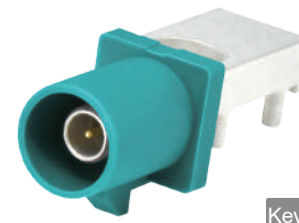


**541**  
FAKRA Plug Vertical Type H=15.50  
Coding:A,B,C,D,E,F,G,H,I,K,L,M,N,Z  
Positions:01



**701**  
SMB-CM to FAKRA Plug Adapter  
Coding:A,F,Z  
Positions:01

Mated Waterproof IP Rating



**541**  
FAKRA Plug R/A Middle Type, CH=0.33  
Coding:A,B,C,D,E,F,G,H,I,K,L,M,N,Z  
Positions:01

Key Down



**541**  
FAKRA Plug R/A Middle Type, CH=0.33  
Coding:A,B,C,D,E,F,G,H,I,K,L,M,N,Z  
Positions:01

Key Left



**541**  
FAKRA Plug R/A Middle Type, CH=0.33  
Coding:A,B,C,D,E,F,G,H,I,K,L,M,N,Z  
Positions:01

Key Right



Key Left

541

FAKRA Plug R/A Middle Type, CH=0.28  
Coding:A,B,C,D,E,F,G,H,I,K,L,M,N,Z  
Positions:01



Stacked Type

541

FAKRA Plug 1x1 R/A Type, CH=14.4  
Coding:A,B,C,D,E,F,G,H,I,K,L,M,N,Z  
Positions:01



Stacked Type

541

FAKRA Plug 1x2 R/A Type, CH=14.4  
Coding:A,B,C,D,E,F,G,H,I,K,L,M,N,Z  
Positions:02



High Reliability

141

FAKRA Jack to Jack Straight Cable  
Coding:A,B,C,D,E,F,G,H,I,K,L,M,N,Z  
Positions:01



High Reliability

141

FAKRA Jack to Jack R/A Cable  
Coding:A,B,C,D,E,F,G,H,I,K,L,M,N,Z  
Positions:01



141

FAKRA Jack Straight to R/A Cable  
Coding:A,B,C,D,E,F,G,H,I,K,L,M,N,Z  
Positions:01



Key Up

541

FAKRA Twin Plug R/A Type, CH=0.33  
Coding:A,B,C,D,E,F,G,H,I,K,L,M,N,Z  
Positions:02



Key Down

541

FAKRA Twin Plug R/A Type, CH=0.33  
Coding:A,B,C,D,E,F,G,H,I,K,L,M,N,Z  
Positions:02



141

FAKRA Jack 1x2 to Plug x2 Cable  
Jack Coding:A,B,C,D,H,I,N,Z  
Positions:02



IP Rating

141

FAKRA Jack to Jack Straight Cable  
Coding:A,B,C,D,E,F,G,H,I,K,L,M,N,Z  
Positions:01



IP Rating

141

FAKRA Jack Straight to R/A Cable  
Coding:A,B,C,D,E,F,G,H,I,K,L,M,N,Z  
Positions:01



IP Rating

141

FAKRA Jack to Jack R/A Cable  
Coding:A,B,C,D,E,F,G,H,I,K,L,M,N,Z  
Positions:01



141

FAKRA Jack 1x2 to Jack x2 Cable  
Coding:A,B,C,D,E,F,G,H,I,K,L,M,N,Z  
Positions:02



IP Rating

141

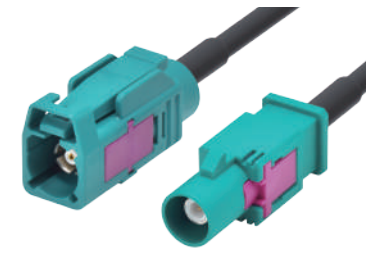
FAKRA Plug to I-Pex MHF/MHF 4L STR  
Coding:A,B,C,D,E,F,G,H,I,K,L,M,N,Z  
Positions:01



IP Rating

141

FAKRA Plug (Front Screw) to I-Pex MHF  
Coding:A,B,C,D,E,F,G,H,I,K,L,M,N,Z  
Positions:01



141

FAKRA Jack 1x1 to Plug 1x1 STR (Long Body)  
Coding:A,B,C,D,E,F,G,H,I,K,L,M,N,Z  
Positions:01



141

FAKRA Jack 1x2 to Plug 1x2 STR (Long Body)  
Coding:A,B,C,D,E,F,G,H,I,K,L,M,N,Z  
Positions:02



A Type  
Key Up

542

Mini FAKRA Plug 1x1 Right Angle Type  
Coding:A,B,C,D,E,F,G,H,J,K,N,Z  
Positions:01



141

FAKRA Jack to Plug Straight Cable  
Coding:A,B,C,D,E,F,G,H,I,K,L,M,N,Z  
Positions:01



IP Rating

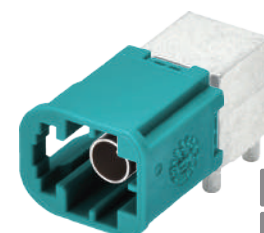
141

FAKRA Jack to Plug Straight Cable  
Coding:A,B,C,D,E,F,G,H,I,K,L,M,N,Z  
Positions:01



141

FAKRA Jack to Jack Straight Cable  
Coding:A,B,C,D,E,F,G,H,I,K,L,M,N,Z  
Positions:01



A Type  
Key Left

542

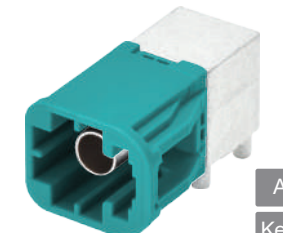
Mini FAKRA Plug 1x1 Right Angle Type  
Coding:A,B,C,D,E,F,G,H,J,K,N,Z  
Positions:01



A Type  
Key Down

542

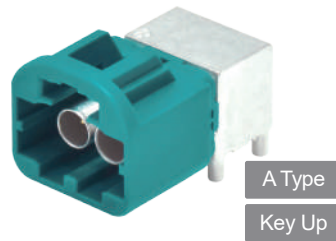
Mini FAKRA Plug 1x1 Right Angle Type  
Coding:A,B,C,D,E,F,G,H,J,K,N,Z  
Positions:01



A Type  
Key Right

542

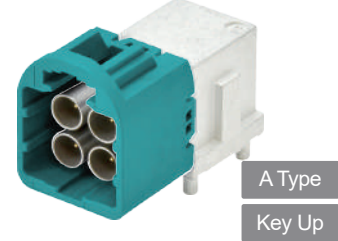
Mini FAKRA Plug 1x1 Right Angle Type  
Coding:A,B,C,D,E,F,G,H,J,K,N,Z  
Positions:01



**542**  
Mini FAKRA Plug 1x2 Right Angle Type  
Coding:A,B,C,D,E,F,G,H,J,K,N,Z  
Positions:02



**542**  
Mini FAKRA Plug 1x2 Right Angle Type  
Coding:A,B,C,D,E,F,G,H,J,K,N,Z  
Positions:02



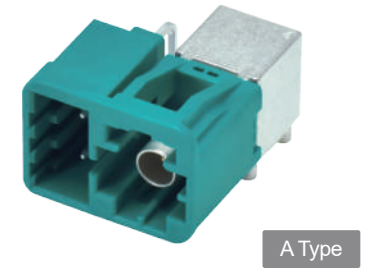
**542**  
Mini FAKRA Plug 2x2 Right Angle Type  
Coding:A,B,C,D,E,F,G,Z  
Positions:04



**542**  
Mini FAKRA Plug 2x2 Vertical Type  
Coding:A,B,C,D,E,F,G,Z  
Positions:04



**542**  
Mini FAKRA Plug 1x1 +MQS 2Pin Vertical Type  
Coding:A,B,C,D,E,F,G,H,J,K,N,Z  
Positions:01+02



**542**  
Mini FAKRA Plug 1x1 +MQS 2Pin R/A Type  
Coding:A,B,C,D,E,F,G,H,J,K,N,Z  
Positions:01+02



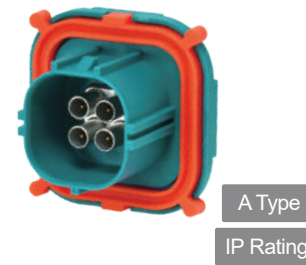
**542**  
Mini FAKRA Plug 2x2 Right Angle Type  
Coding:A,B,C,D,E,F,G,Z  
Positions:04



**542**  
Mini FAKRA Plug 2x2 Right Angle Type  
Coding:A,B,C,D,E,F,G,Z  
Positions:04



**542**  
Mini FAKRA Plug 2x2 Right Angle Type  
Coding:A,B,C,D,E,F,G,Z  
Positions:04



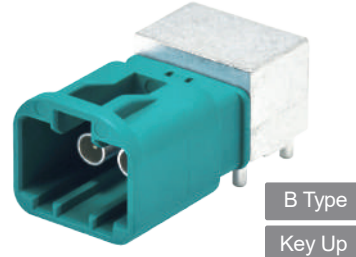
**542**  
Mini FAKRA Plug 2x2 Vertical Type  
Coding:A,B,C,D,E,F,G,H,J,K,N,Z  
Positions:04



**142**  
Mini FAKRA Jack 2x2 Cable  
Coding:A,B,C,D,E,F,Z  
Positions:04



**142**  
Mini FAKRA Jack 2x2 to FAKRA Plug x4 Cable  
Coding:A,B,C,D,E,F,Z  
Positions:04



**542**  
Mini FAKRA Plug 1x2 Right Angle Type  
Coding:A,B,C,D,E,F,Z  
Positions:02



**542**  
Mini FAKRA Plug 1x2 Right Angle Type  
Coding:A,B,C,D,E,F,Z  
Positions:02



**542**  
Mini FAKRA Plug 2x2 Right Angle Type  
Coding:A,B,C,D,E,F,Z  
Positions:04



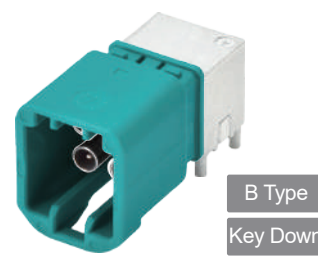
**142**  
Mini FAKRA Jack 2x2 to FAKRA Jack x4 Cable  
Coding:A,B,C,D,E,F,Z  
Positions:04



**142**  
Mini FAKRA Jack 2x2 to SMA Plug x4 Cable  
Coding:A,B,C,D,E,F,Z  
Positions:04



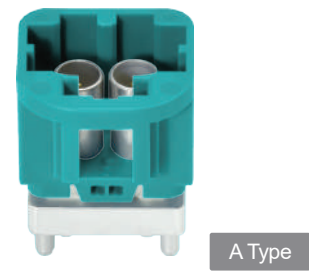
**142**  
Mini FAKRA Jack 2x2 to SMA Jack x4 Cable  
Coding:A,B,C,D,E,F,Z  
Positions:04



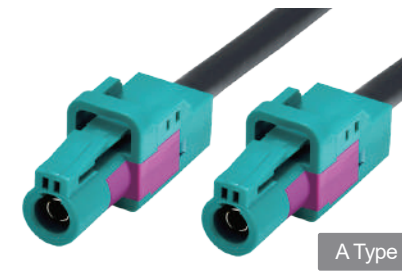
**542**  
Mini FAKRA Plug 2x2 Right Angle Type  
Coding:A,B,C,D,E,F,Z  
Positions:04



**542**  
Mini FAKRA Plug 1x1 Vertical Type  
Coding:A,B,C,D,E,F,G,H,J,K,N,Z  
Positions:01



**542**  
Mini FAKRA Plug 1x2 Vertical Type  
Coding:A,B,C,D,E,F,G,H,J,K,N,Z  
Positions:02



**142**  
Mini FAKRA Jack 1x1 Cable  
Coding:A,B,C,D,E,F,G,H,J,K,Z  
Positions:01



**142**  
Mini FAKRA Jack 1x1 to FAKRA Jack Cable  
Coding:A,B,C,D,E,F,G,H,J,K,Z  
Positions:01

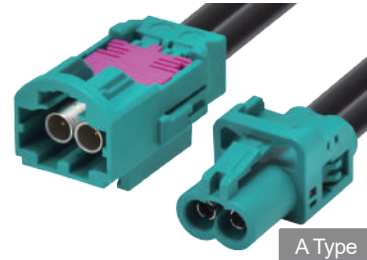


**142**  
Mini FAKRA Jack 1x2 to FAKRA Jack x2 Cable  
Coding:A,B,C,D,E,F,G,H,J,K,N,Z  
Positions:02



A Type

**142**  
Mini FAKRA Plug to Jack 1x1 Cable  
Coding:A,B,C,D,E,F,G,H,J,K,Z  
Positions:01



A Type

**142**  
Mini FAKRA Plug to Jack 1x2 Cable  
Coding:A,B,C,D,E,F,G,H,J,K,Z  
Positions:02



A Type

**142**  
Mini FAKRA Plug to Plug 2x2 Cable  
Coding:A,B,C,D,E,F,G,Z  
Positions:04



A Type

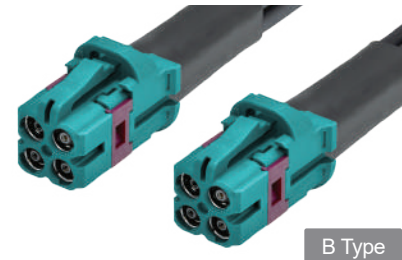
**142**  
Mini FAKRA Jack 1x1 +MQS 2Pin Cable  
Coding:A,B,C,D,E,F,G,H,J,K,Z  
Positions:01+02



**544**  
CAR EtherNet Plug 1x1 Vertical Type  
Coding:A,B,C,D,E,F,G,H,J,K,L,M,O,Z  
Positions:02



**544**  
CAR EtherNet Plug 1x1 Right Angle Type  
Coding:A,B,C,D,E,F,G,H,J,K,L,M,O,Z  
Positions:02



B Type

**142**  
Mini FAKRA Jack 2x2 Cable  
Coding:A,B,C,D,E,F,Z  
Positions:04



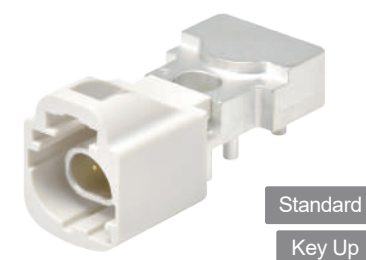
B Type

**142**  
Mini FAKRA Jack 2x2 to FAKRA Plug x4 Cable  
Coding:A,B,C,D,E,F,Z  
Positions:04



B Type

**142**  
Mini FAKRA Jack 2x2 to FAKRA Jack x4 Cable  
Coding:A,B,C,D,E,F,Z  
Positions:04



Standard  
Key Up

**544**  
CAR EtherNet Plug 1x1 R/A CH=0.25  
Coding:A,B,C,D,E,F,G,H,I,K,L,M,N,Z  
Positions:02



Reverse  
Key Down

**544**  
CAR EtherNet Plug 1x1 R/A CH=0.25  
Coding:A,B,C,D,E,F,G,H,I,K,L,M,N,Z  
Positions:02

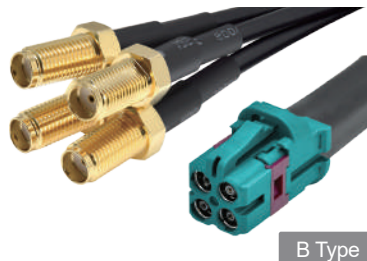


**544**  
CAR EtherNet Plug 1x2 Right Angle Type  
Coding:A,B,C,D,E,F,G,H,J,K,L,M,O,Z  
Positions:04



B Type

**142**  
Mini FAKRA Jack 2x2 to SMA Plug x4 Cable  
Coding:A,B,C,D,E,F,Z  
Positions:04



B Type

**142**  
Mini FAKRA Jack 2x2 to SMA Jack x4 Cable  
Coding:A,B,C,D,E,F,Z  
Positions:04



A Type  
IP Rating

**142**  
Mini FAKRA Jack to Plug 2x2 Cable  
Coding:A,B,C,D,E,F,G,H,J,K,N,Z  
Positions:04



**544**  
CAR EtherNet Plug 2x2 Right Angle Type  
Coding:A,B,C,D,E,F,G,H,J,K,L,M,O,Z  
Positions:08

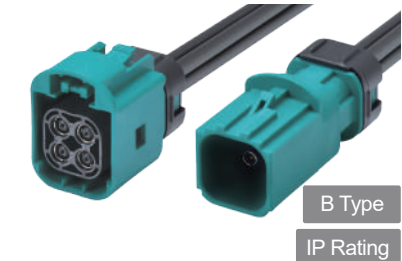


**544**  
CAR EtherNet Plug 2x3 Right Angle Type  
Coding:A,B,C,D,E,F,G,H,J,K,L,M,O,Z  
Positions:12



IP Rating

**544**  
CAR EtherNet Plug 2x2 Vertical Type  
Coding:A,B,C,D,E,F,G,H,J,K,L,M,O,Z  
Positions:08



B Type  
IP Rating

**142**  
Mini FAKRA Jack to Plug 2x2 Cable  
Coding:A,B,C,D,E,F,G,H,Z  
Positions:04



A Type  
IP Rating

**142**  
Mini FAKRA Plug 2x2 For Panel  
Coding:A,B,C,D,E,F,G,H,Z  
Positions:04

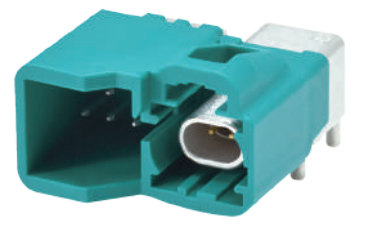


B Type  
IP Rating

**142**  
Mini FAKRA Plug 2x2 For Panel  
Coding:A,B,C,D,E,F,G,H,Z  
Positions:04



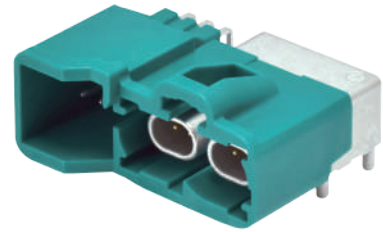
**544**  
CAR EtherNet 1x1 +MQS 6Pin Vertical Type  
Coding:A,B,C,D,E,F,G,H,J,K,L,M,O,Z  
Positions:06+02



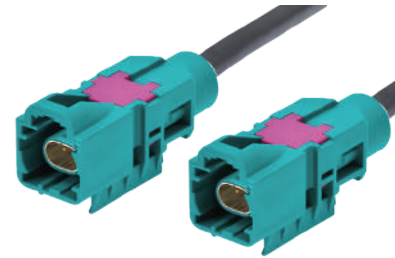
**544**  
CAR EtherNet 1x1 +MQS 6Pin R/A Type  
Coding:A,B,C,D,E,F,G,H,J,K,L,M,O,Z  
Positions:06+02



**144**  
CAR EtherNet 1x2 +MQS 6Pin Vertical Type  
Coding:A,B,C,D,E,F,G,H,J,K,L,M,O,Z  
Positions:06+04



**144**  
CAR EtherNet 1x2 +MQS 6Pin R/A Type  
Coding:A,B,C,D,E,F,G,H,J,K,L,M,O,Z  
Positions:06+04



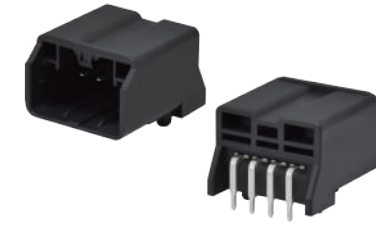
**144**  
CAR EtherNet Plug 1x1 Cable  
Coding:A,B,C,D,E,F,G,H,J,K,L,M,O,Z  
Positions:02



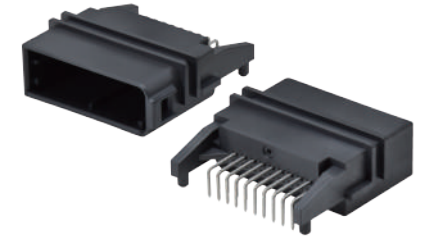
**144**  
CAR EtherNet Jack 1x1 Cable  
Coding:A,B,C,D,E,F,G,H,J,K,L,M,O,Z  
Positions:02



**545**  
MQSHeader, Right Angle Type  
Coding:A,D,E  
Positions:3



**545**  
MQSHeader, Right Angle Type  
Coding:A  
Positions:4



**545**  
MQSHeader, Right Angle Type  
Coding:A  
Positions:20



**144**  
CAR EtherNet Jack 1x2 Cable  
Coding:A,B,C,D,E,F,G,H,J,K,L,M,O,Z  
Positions:04



**144**  
CAR EtherNet Jack 2x2 Cable  
Coding:A,B,C,D,E,F,G,H,J,K,L,M,O,Z  
Positions:08



**144**  
CAR EtherNet Jack 2x3 Cable  
Coding:A,B,C,D,E,F,G,H,J,K,L,M,O,Z  
Positions:12



**7024201 / 7024202**  
Mini FAKRA 1x1 Adaptor  
Positions:01



**7024203 / 7024204**  
Mini FAKRA 1x1 Adaptor  
Positions:01



**7024301001Z**  
HSD Plug R/A Type  
Coding:A,B,C,D,E,F,Z  
Positions:04



**144**  
CAR EtherNet Jack 2x2 Cable  
Coding:A,B,C,D,E,F,G,H,J,K,L,M,N,P,R,Z  
Positions:08



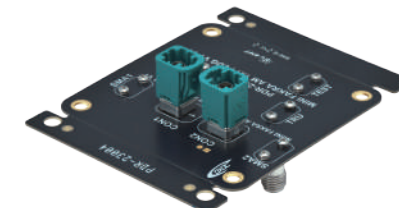
**144**  
CAR EtherNet Jack 1x1 +MQS 6Pin Cable  
Coding:A,B,C,D,E,F,G,H,J,K,L,M,O,Z  
Positions:02+06



**144**  
CAR EtherNet Jack 1x2 +MQS 6Pin Cable  
Coding:A,B,C,D,E,F,G,H,J,K,L,M,O,Z  
Positions:02+06



**70241010010**  
FAKRA Plug R/A Middle Type, CH=0.33  
Coding:A,B,C,D,E,F,G,H,I,K,L,M,N,Z  
Positions:01



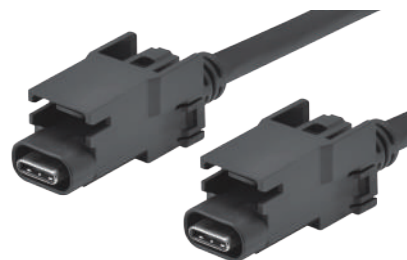
**70242020020**  
Mini FAKRA Plug 1x1 Vertical Type  
Coding:A,B,C,D,E,F,G,H,J,K,N,Z  
Positions:01



**70244030010**  
CAR EtherNet Plug 2x2 R/A Type  
Coding:A,B,C,D,E,F,G,H,J,K,L,M,O,Z  
Positions:04



**533**  
Automotive Type C Receptacle 40G/20G/480M  
Coding:A,B  
Positions:24



**133**  
Automotive Type C Cable 40G/20G/480M  
Coding:A,B  
Positions:24



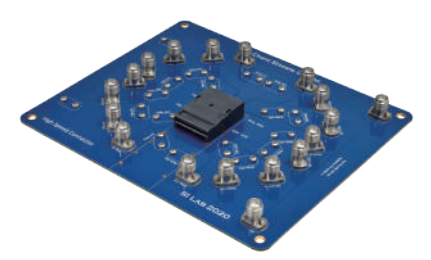
**545**  
MQSHeader, Right Angle Type  
Coding:A  
Positions:2



**70233010020**  
USB4 Gen3 Receptacle CH=1.60mm  
Positions:24



**70233010010**  
USB4 Gen3x2 Receptacle Hybrid CH=3.4mm  
Positions:24



**70292010010**  
QSFP-DD Connector  
Positions:76



ADAS



Cloud Center



Metaverse



AIoT

High-Speed Interconnect for AI Systems Engineered for Signal Integrity and Scalability As AI and HPC data rates move beyond 400G and 800G, electrical interconnect performance — including insertion loss, crosstalk, and channel margin — has become a critical limiter of system performance.

Our high-speed pluggable I/O interconnect solutions are engineered to meet the electrical and mechanical requirements of next-generation AI platforms.

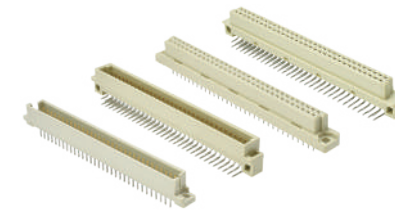
專為 AI 系統打造的高速互連解決方案，為訊號完整性與可擴充性設計。隨著 AI 與 HPC 的資料傳輸速率邁向 400G 與 800G 以上，電氣互連效能-包括插入損耗、串擾與通道裕量-已成為系統效能的關鍵限制因素。我們的高速可插拔 I/O 互連解決方案，專為滿足下一代 AI 平台在電氣與機械層面的需求而打造。

### Engineering Highlights

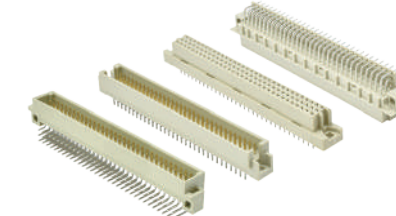
- Excellent signal integrity for high-speed channels
- High-density mechanical design for multi-lane configurations
- Pluggable interface to simplify system integration
- Designed for coexistence with future CPO architectures

### 工程特色

- 為高速通道提供卓越的訊號完整性 · 可插拔介面，簡化系統整合
- 高密度機構設計，支援多通道配置 · 設計可與未來的CPO架構共存



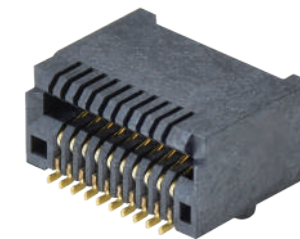
**505**  
DIN 41612 Dual Rows B, Q Type  
Positions:16,32,64



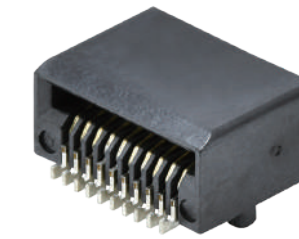
**505**  
DIN 41612 Three Rows C, R Type  
Positions:16,32,48,64,96



**515**  
RJ45 Jack



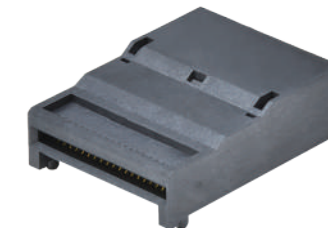
**591**  
SFP+ Conn.  
Positions:20



**591**  
SFP+ 28G Conn.  
Positions:20



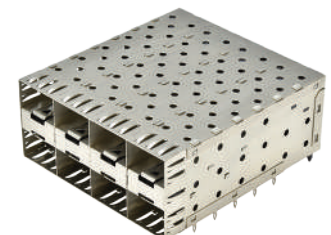
**592**  
QSFP28G Conn.  
Positions:38



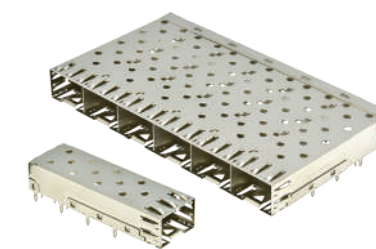
**592**  
QSFP-DD Conn.  
Positions:76



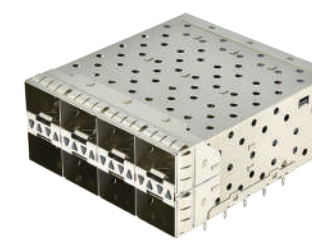
**591**  
OSFP Conn.  
Positions:60



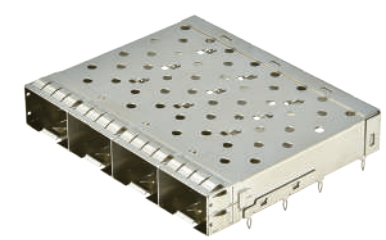
**591**  
SFP with & w/o Light Pipes  
2x1,2x2,2x4,2x6



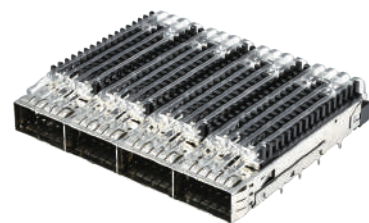
**591**  
SFP Type Cage  
1x1,1x2,1x4,1x6



**591**  
SFP+ EMI Springs  
(Stacked Cage 2x1~2x6 Type)



**591**  
SFP+ EMI Spring  
1x1,1x2,1x4,1x6  
(also Stacked Cage 2x1~2x6 Type)



**592**  
QSFP28G Cage Through Bezel with PCI/SAN/NETWORKING Heatsink, with Quad Light Pipe



**592**  
QSFP+ Cage with PCI/SAN/NETWORKING Heatsink, with Single & Double Light Pipe



**592**  
QSFP-DD Cage with Heatsink & Light Pipes



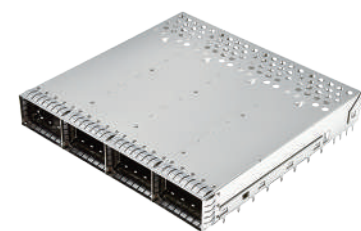
**551**  
Mini-SAS HD Internal Conn. 1x1, 1x2, 1x4



**551**  
Mini-SAS HD External Conn. 1x1, 1x2, 1x4



**151**  
Mini-SAS HD 4i Cable



**591**  
OSFP Cage Assembly 1x1, 1x2, 1x4



**592**  
QSFP+ Cage with & w/o Light Pipes (Stacked 2x1, 2x2, 2x3)



**592**  
QSFP28G Cage with & w/o Light Pipes (Stacked 2x1, 2x2, 2x3)



**151**  
Mini-SAS HD 8i Cable



**151**  
Mini-SAS HD 4i AOC Cable



**151**  
Mini-SAS HD 4i Internal Cable



**152**  
SFP+ 10G/25G DAC Cable



**152**  
SFP-DD 100G AOC Cable



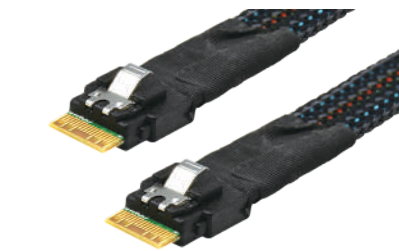
**152**  
QSFP+ 40G DAC Cable



**151**  
OCulink 4i R/A to 4i STR Cable



**551**  
SlimSAS 8i 74P SMT Vertical Connector



**151**  
Slimline 4i Cable



**152**  
QSFP56 200G DAC Cable



**152**  
QSFP-DD 400G/800G DAC Cable



**152**  
OSFP 400G/800G/1.6T DAC Cable



**151**  
Slimline 8i Cable



**151**  
LP Slimline 16i to 2xSlimline 8i



**151**  
Gen-Z 140P to LP Slimline 16i

# Waterproof



ADAS



Cloud Center



Metaverse



AIoT

The M series features cross shielding for enhanced signal integrity and supports Cat 6A data transmission rates of up to 10 Gbps. These connectors are vibration-proof, corrosion-resistant, and rated IP67 waterproof. It's ideal for wet and harsh environments, including surveillance systems, mass rapid transit/railways, industrial automation, and broadband wireless access. Our portfolio includes A, D, and X-coded versions to serve various design needs.

M系列具有交叉屏蔽功能，可提供出色的信號完整性，並支持 Cat 6A 數據傳輸速率，最高可達 10 Gbps。6A 數據傳輸速率高達 10Gbps。這些連接器防震、耐腐蝕，防水等級為 IP67。它是潮濕和惡劣環境的理想選擇，包括監控系統、大眾快速交通/鐵路、工業自動化和寬頻無線存取。

我們的產品組合包括 A、D 和 X 編碼版本，可滿足各種設計需求。

## Waterproof



501  
Waterproof High Density D-Sub Solder 180°



501  
Waterproof High Density D-Sub 180°



501  
Waterproof High Density D-Sub 90°



502  
Waterproof D-Sub Solder 180°



502  
Waterproof D-Sub 180°



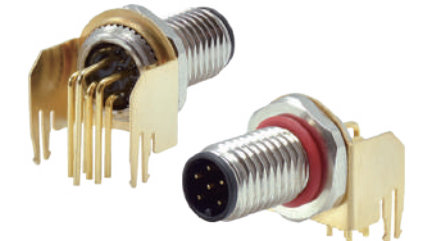
502  
Waterproof D-Sub 90°



549  
M5 Front Mount Male DIP  
A Code Positions:03,04



549  
M5 Front Mount Female Solder  
A Code Positions:03,04



549  
M8 Front Mount Male DIP 90°  
A Code Positions:02~08



549  
M8 Front Mount Female Solder  
A Code Positions:02~08



549  
M12 Front Mount Female DIP  
A Code Positions:02~12



549  
M12 Front Mount Female Solder  
A/B/D Code Positions:02~12



549  
M12 Assembly Solder Type Male/Female  
A Code Positions:04,05  
D Code Positions:04,05



549  
M12 Panel Mount, with M16 Thread Male  
A Code Positions:04,05,08  
D Code Positions:04,05



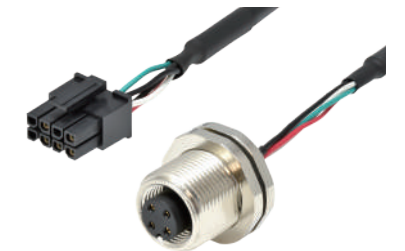
549  
M12 Panel Mount, with PG9 Thread Male  
A Code Positions:04,05,08  
D Code Positions:04,05



549  
M16 Front Mount Female Solder  
A Code Positions:02~05



549  
M16 Front Mount Female DIP  
A Code Positions:06~14



149  
M12 A Code Female Rear/Front Mount,  
Free End Cable  
A Code Positions:04,05



549  
M12 Panel Mount Female  
A Code Positions:02~12  
D Code Positions:04,05



549  
M12 Molding Type Male  
A Code Positions:04,05  
D Code Positions:04,05



549  
M12 Molding Type Female  
A Code Positions:04,05  
D Code Positions:04,05



149  
M12 A Code to USB 2.0 A Code  
A Code Positions:05  
Length:200mm,1m



149  
M12 D Code to D Code Cable  
D Code Positions:04  
Length:1m,2m



149  
M12 D Code to RJ45 Cable  
D Code Positions:04  
Length:60cm,2m



549  
M12 Assembly Shield Type Male  
A Code Positions:04,05,08  
D Code Positions:04,05



549  
M12 Assembly IDC Type Male  
X Code Positions:08



549  
M12 Assembly IDC Type Male  
D Code Positions:04



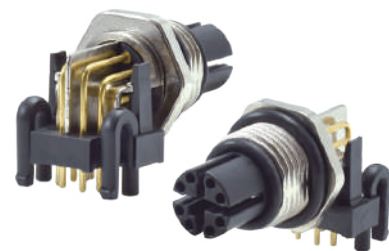
149  
M12 X Code Cable  
X Code Positions:08  
Length:60cm,2m



149  
M12 X Code IDC Cable  
X Code Positions:08  
Length:1m,2m



149  
M12 X Code to RJ45 Cable  
X Code Positions:08  
Length:60cm,2m



549  
M12 Front Mount Female DIP 90°  
X Code Positions:08



549  
M12 Front Mount Female Solder  
X Code Positions:08



549  
M12 PCB Mount Female  
X Code Positions:08



149  
M12 X Code(F) Panel Mount to RJ45 Cable  
X Code Positions:08  
Length:33cm



149  
M12 X Code to M8 A Code Cable  
X Code Positions:08, A Code Positions:04  
Length:15m

# Consumer Electronic



ADAS

Provides PC, Server I/O and PC peripheral connector applications, ranging from USB Type A/USB Type C/HDMI/DisplayPort/SD/CFexpress/CFast and other diverse connectors.



Cloud Center

提供PC、Server I/O、裝置周邊連接器應用，從USB A/USB Type C/HDMI/DisplayPort/SD/CFexpress/CFast 等多樣化連接器。



Metaverse

USB Type C currently supports up to USB4 Gen3 40Gbps high-speed transmission, and power supports PD3.1 with 240W power transmission.

USB Type C 目前最高支援到 USB4 Gen4 80Gbps 高速傳輸，電力部分支援到PD3.1 240W 功率。



AIoT



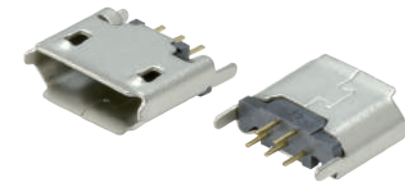
531  
USB 2.0 A Type, DIP  
Positions:04,08



531  
USB 2.0 B Type, DIP  
Positions:04



531  
USB 2.0 A Type, SMT  
Positions:04



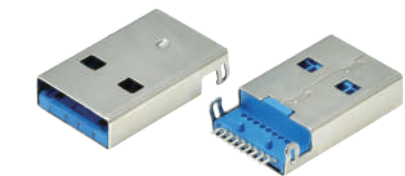
531  
micro USB 2.0 AB Type, DIP  
Positions:05



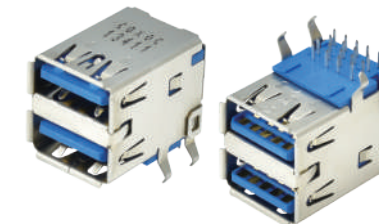
531  
micro USB 2.0 AB Type, SMT  
(Combo Solder)  
Positions:05



531  
Mini USB 2.0  
Positions:05



531  
USB 3.0 A Plug SMT  
Positions:09



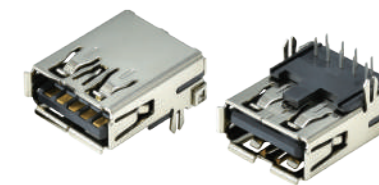
531  
USB 3.0 Conn. A Type Female Dual Port  
Positions:18



531  
USB 3.0 Conn. A Type Female SMT  
Positions:09



531  
USB 3.0 Conn. A Type Female  
Positions:09



531  
USB 3.0 Conn. A Type Female DIP  
Positions:09



531  
USB 3.0 Conn. B Type Female DIP R/A  
Positions:09



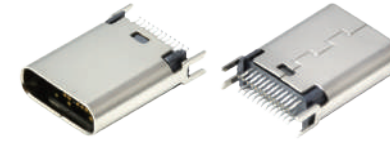
**531**  
USB 3.0 Conn. A Type Female DIP  
Straight  
Positions:09



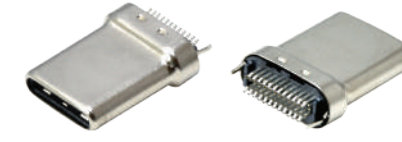
**531**  
USB 3.0 Conn. A Type Female  
Up Right Angle  
Positions:09



**531**  
micro USB 3.0 B SMT  
Positions:10



**533**  
USB Type C Receptacle Vertical  
Height=10.5mm  
Positions:24



**533**  
USB Type C Plug Extrusion Dual SMT  
Positions:24



**533**  
USB Type C Plug Dual SMT Vertical  
Positions:24



**531**  
USB 3.1 A Receptacle  
(Power delivery available)  
Positions:10



**531**  
USB 3.1 Conn. 10G A Type SMT  
Positions:08



**531**  
USB 3.1 A Female Conn. DIP CH=12.58mm  
Right Angle  
Positions:09



Sealed

**533**  
USB Type C Receptacle Waterproof  
Top-Mount, w/ & w/o Screw Lock  
Positions:16



Sealed

**533**  
USB Type C Receptacle Waterproof  
Top-Mount, w/ & w/o Screw Lock  
Positions:24



Sealed

**533**  
USB Type C Receptacle Waterproof  
30u" Gold, CH=2.28mm  
Positions:16



**533**  
USB4 Type C Receptacle Right Angle  
Dual SMT Top-Mount, CH=1.60mm  
Positions:24



**533**  
USB4 Type C Receptacle Right Angle  
Top-Mount  
Positions:24



**533**  
USB Type C Receptacle Right Angle  
Top-Mount  
Positions:24



**533**  
USB Type C Receptacle Up Right Angle  
DIP+SMT  
Positions:24



**517**  
DC Power Jack



**517**  
Earphone Jack

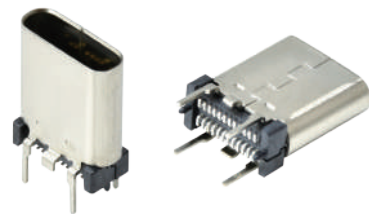


**533**  
USB Type C Receptacle Dual SMT  
Top-Mount, CH=1.68mm  
Positions:24



Sealed

**533**  
USB Type C Receptacle Waterproof  
Top-Mount  
Positions:24



**533**  
USB Type C Receptacle Vertical  
Height=6.5,9.3,10.5,12,15mm  
Positions:24



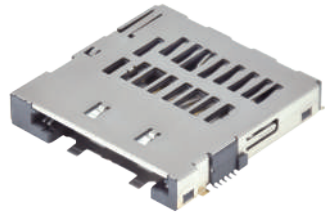
**517**  
Miniature Jack



**517**  
SPDIF



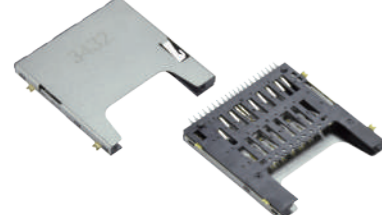
**517**  
RCA Jack



**573**  
SDexpress + CFexpress Type A Combo  
Positions:24



**573**  
SD 7.0 Non Push, Top-Mount  
Positions:19



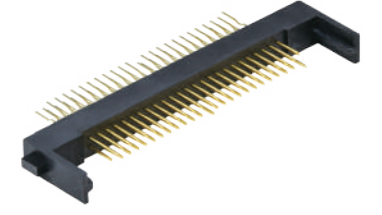
**573**  
SD 7.0 / 8.0 / 9.0 Push Push, Top-Mount  
Positions:19



**575**  
CF, PCMCIA Card Straddle Type  
Positions:50,68



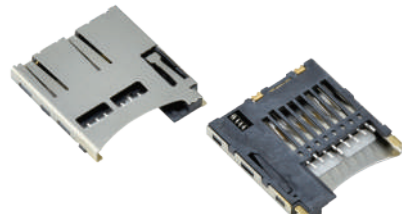
**575**  
CF, PCMCIA Card SMT Type with Grounding  
Positions:50,68



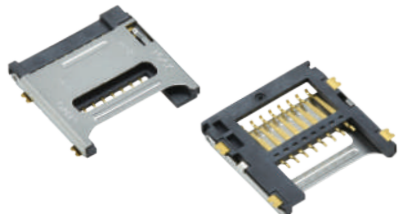
**575**  
Compact Flash Card Socket Straddle Type  
Positions:50



**573**  
micro SD 4.0 Push Push & Non Push  
Positions:18



**573**  
micro SD Push Push  
Positions:08



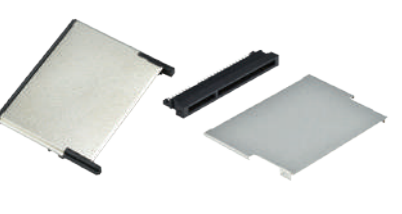
**573**  
micro SD Hinge Type  
Positions:08



**575**  
Compact Flash Card Socket Type II Slim Type  
Positions:50



**575**  
CFast w/ & w/o Ejector Stand Off 0/2.0mm  
Positions:24



**575**  
CFast Card



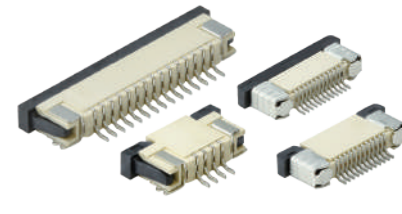
**761**  
micro SD 4.0 to SD 4.0 Adapter



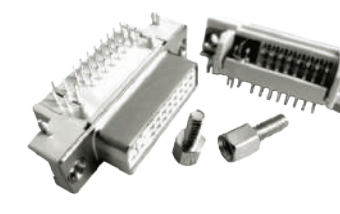
**575**  
CFexpress Type A  
w/ & w/o Shell Ground  
Positions:13



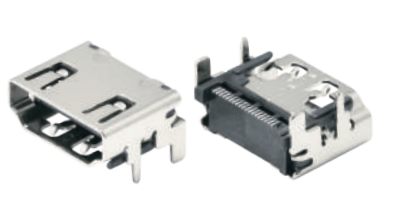
**575**  
CFexpress Type B  
(Push Push / Non Push / Push with Lock)  
Positions:21



**583**  
FPC Conn. SMT, Pitch:1.0/0.5mm  
Positions:03~40



**501**  
DVI Conn.  
Positions:24,29



**508**  
HDMI 2.1V Conn.  
Positions:19



**575**  
CFexpress Type B Lid  
Positions:21



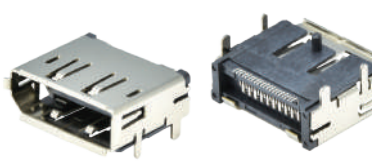
**575**  
CFexpress Type C&D Bracket  
Positions:64



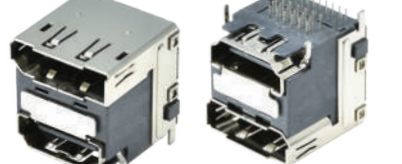
**575**  
CFexpress Type C&D Conn.  
Positions:64



**508**  
HDMI Conn. Up Right Type  
Positions:19



**509**  
DisplayPort Conn. SMT Type  
Positions:20



**509**  
DisplayPort + HDMI Dual Port Conn.  
Positions:39

# Cable / Smart Cable



ADAS

Cables used in server applications, including USB 2.0, USB 3.2, USB 4, USB AOC, and Cat 8 cables, support both internal signal transmission and external connectivity.

應用於伺服器中的線束，包括USB2.0/USB3.2/USB4/USB AOC/Cat 8 Cable等，提供了內接訊號傳輸使用以及外接傳輸的選擇。



Cloud Center

For metaverse applications, we offer one-stop services, providing customized cable solutions for internal use as well as passive or active solutions for external connectivity.

對於元宇宙應用，從內部使用的客製化線材一直到外接線材長/短米數的方案，皆可提供一站式服務。



Metaverse

Cables for industrial applications are used under more stringent conditions. Additional functions can be added to the cables, such as USB cable with a screw lock, to increase product reliability.

工業應用線材，使用情境較為嚴苛，線材可增加額外功能，像是USB cable帶鎖，來增加產品可靠度。



AIoT

## Cable / Smart Cable



131  
USB 2.0 A Female Cable



131  
USB 2.0 A to B Cable



131  
USB 2.0 A to A Cable



131  
USB 2.0 A to mini B Cable



131  
USB 2.0 A to micro B Cable



131  
USB 3.0 A to A Female Cable



131  
USB 3.0 A to B Cable



131  
USB 3.0 A to A Cable



131  
USB 3.0 A to micro B Cable



133  
USB Type C to C Cable with Single Screw



133  
USB Type C to USB 3.1 A Cable with Dual Screw



133  
USB Type C to USB 2.0 A Cable



133  
USB Type C to USB 2.0 B Cable



133  
USB Type C to USB 2.0 C Cable



133  
USB Type C to USB 2.0 micro B Cable



133  
USB Type C to DisplayPort Cable Dual Way



133  
USB Type C 3.2 Gen2 AOC Cable  
Length:6m,10m,12m



109  
DisplayPort to DisplayPort Cable



133  
USB Type C to USB 3.1 Gen1 A Female Cable



133  
USB Type C to USB 3.1 Gen2 A Cable



133  
USB Type C to USB 3.1 Gen2 B Cable



109  
Mini DisplayPort to Mini DisplayPort Cable



108  
DisplayPort to Mini DisplayPort Cable



108  
HDMI A to A Cable 1.4v



133  
USB Type C to USB 3.1 Gen2 micro B Cable



133  
USB Type C to USB 3.1 Gen2 Cable  
with E-Mark & without E-Mark



133  
USB4 Gen4 Cable, 80Gbps, 240W(5A/48V)  
Length:1m



108  
HDMI A to A Cable 2.0v



115  
HDMI A to A Cable 2.1v



112  
Cat 5e / 6a / 7 / 8 Cable



133  
USB4 Gen3 Cable, 40Gbps, 240W(5A/48V)  
Length:1m



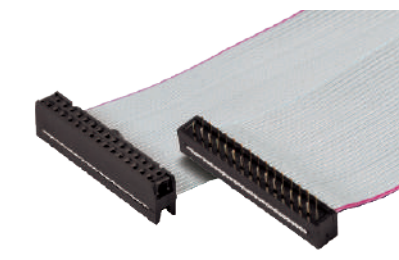
133  
USB4 Gen2 Cable, 20Gbps, 240W(5A/48V)  
Length:1m



133  
USB4 Gen2 Cable, 5Gbps, 240W(5A/48V)  
Length:2m



112  
DMM Socket 40 Pin Flat Cable



112  
IDC Socket Dual Row 26 Pin to Transition  
Plug 26 Pin Flat Cable

# OTG Series



ADAS

Provides various adapters and cross-interface applications, such as Type C to Display or Type C to HDMI adapters.



Cloud Center

提供各式轉接及跨界面應用，像是Type C to Display 或是 Type C to HDMI 轉接。



Metaverse

In addition, we offer customized adapter services, including the OTG series, which features COXOC's unique patented products.

另外有客製化轉接頭服務，其中OTG系列產品為詮欣獨有之專利產品。



AIoT



# PC Peripheral



Provides PC and Server I/O peripheral connector applications.

提供PC、Server I/O 周邊連接器應用。



Cloud Center

D-Sub high-density product line offers a wide range of termination options for board and cable ends.

D-Sub high density 產品系列為電路板和電纜末端提供多種端接選擇。



Metaverse

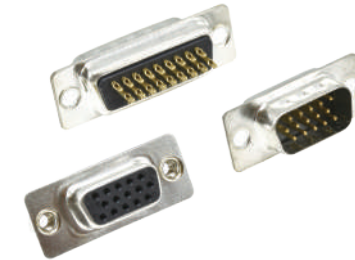
Header Connector is used for internal/external PCB docking.

Header Connector 應用於內/外部PCB對接。

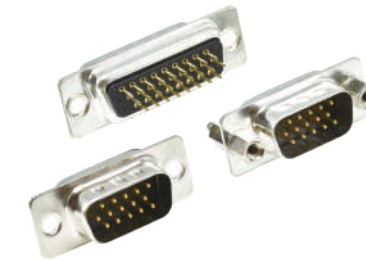


AIoT

## PC Peripheral



**501**  
High Density D-Sub Solder  
Positions:15,26,44,62,78



**501**  
High Density D-Sub PCB Straight Posted  
Positions:15,26,44,62,78



**501**  
High Density D-Sub PCB Right Angle  
Positions:15,26,44,62,78



**501**  
High Density D-Sub Crimp Housing & Contacts  
Positions:15,26,44,62,78



**501**  
High Density D-Sub Dual Port  
Positions:15F/15F



**501**  
Slim High Density D-Sub PCB Straight  
Positions:15



**502**  
D-Sub Solder  
Positions:09,15,25,37



**502**  
D-Sub Solder with EMI Filter  
Positions:09,15,25,37,50



**502**  
D-Sub PCB Straight (Stamped Contacts)  
Positions:09,15,25,37,50



**502**  
D-Sub PCB High Profile Housing Straight Posted  
Positions:09,15,25,37,50



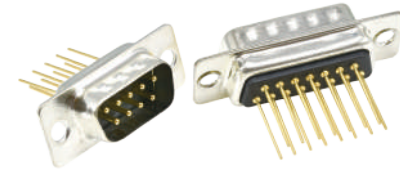
**502**  
D-Sub Press Fit  
Positions:09



**502**  
D-Sub PCB Straight (Machined Contacts)  
Positions:09,15,25,37,50



**502**  
D-Sub PCB Straight with EMI Filter (Machined Contacts)  
Positions:09,15,25,37



**502**  
D-Sub PCB Straight Machined wire Wrap  
Positions:09,15,25,37,50



**502**  
D-Sub PCB Right Angle  
Footprint:8.08mm(0.318")  
Positions:09,15,25,37



**502**  
D-Sub PCB Straight For Notebook  
Positions:09M,25F



**502**  
D-Sub PCB Right Angle For Notebook  
Positions:09M,25F



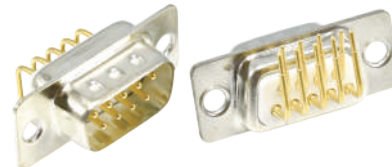
**502**  
D-Sub PCB Right Angle SMT For Notebook  
Positions:09M,25F



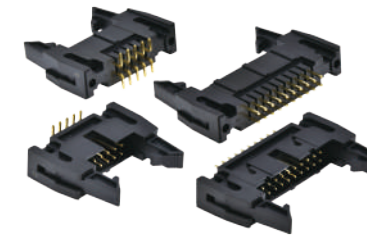
**502**  
D-Sub PCB Right Angle with EMI Filter  
Footprint:8.08mm(0.318")  
Positions:09,15,25,37



**502**  
D-Sub PCB Right Angle  
Footprint:10.3mm(0.405")  
Positions:09,15,25,37



**502**  
D-Sub PCB Right Angle w/o Rear Cover  
Footprint:8.08mm(0.318")  
Positions:09,15,25,37,50



**521**  
Ejector Header  
Pitch:2.54mm  
Positions:10,14,16,20,24,26,30,34,40,50,60,64



**521**  
Ejector Header SMT  
Pitch:2.0mm  
Positions:6~64



**514**  
Box Header / Box Header SMT  
Pitch:2.54mm  
Positions:10,14,16,20,24,26,30,34,40,50,60,64



**502**  
D-Sub PCB Right Angle w/o Rear Cover  
Footprint:10.3mm(0.405")  
Positions:09,15,25,37,50



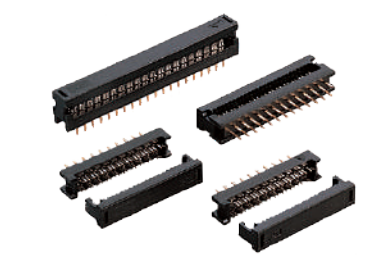
**502**  
D-Sub PCB Right Angle  
Footprint:14.96mm(0.590")  
Positions:09,15,25,37



**502**  
D-Sub Crimp Housing  
Positions:09,15,25,37,50



**522**  
IDC Socket Dual Row  
Pitch:2.54mm  
Positions:10,14,16,20,24,26,30,34,40,50,60,64



**522**  
Transition Plug  
Pitch:2.54mm  
Positions:10,14,16,20,24,26,30,34,40,50,60,64



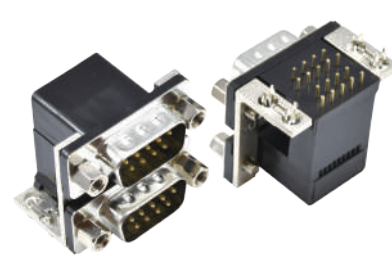
**522**  
DIP Plug  
Pitch:2.54mm  
Positions:10,14,16,20,24,26,30,34,40,50,60,64



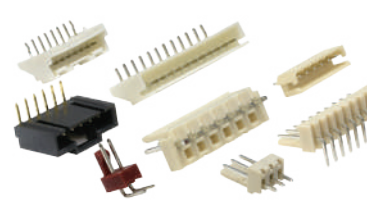
**502**  
D-Sub Crimp Contacts



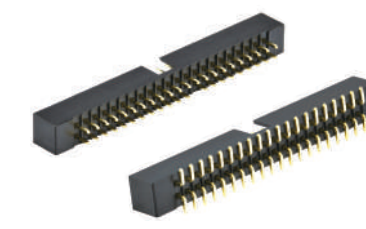
**502**  
D-Sub IDC For Flat Ribbon Cable  
Positions:09,15,19,37,50



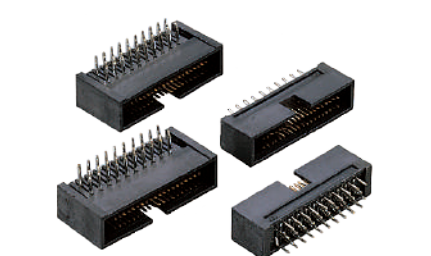
**502**  
D-Sub Dual Port  
Positions:09,15,25,37,50



**511**  
Wafer  
Pitch:0.8,1.0,1.25,2.0,2.54,3.0,3.96,4.25,08,6.35  
Positions:02~40



**514**  
Box Header DIP / SMT  
Pitch:2.0mm  
Positions:10,12,14,16,20,24,26,34,40,44,50,68



**514**  
SCSI II Box Header  
Pitch:1.27mm  
Positions:20,26,32,34,40,50,52,60,68,80,100

# Board To Board



ADAS



Cloud Center



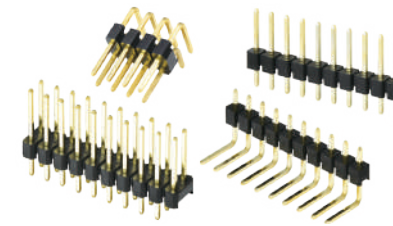
Metaverse



AIoT

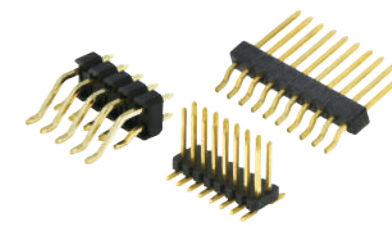
Diversified board-to-board connection system, ranging from Pitch 2.54mm/2.0mm/1.27mm/1.0mm. High-speed interface with Pitch 0.8mm/0.5mm, suitable for PCIe Gen4 and above applications.

多樣化板對板連接系統，範圍包括Pitch 2.54mm/2.0mm/1.27mm/1.0mm，高速介面有Pitch 0.8mm/0.5mm，可供PCIe Gen4以上之應用。



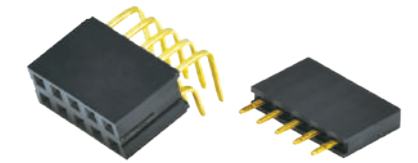
512

Pin Header DIP  
Pitch:2.54mm  
Positions:02~120



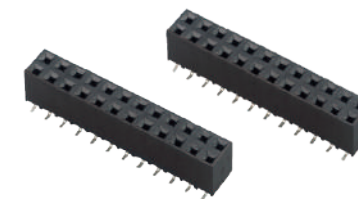
512

Pin Header SMT  
Pitch:2.54mm  
Positions:02~80



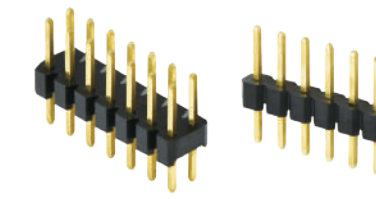
513

Female Header  
Pitch:2.54mm  
Positions:02~80



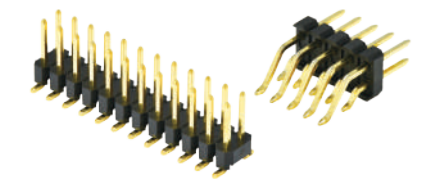
513

Female Header SMT  
Pitch:2.54mm  
Positions:02~80



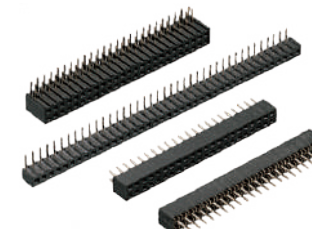
512

Pin Header DIP  
Pitch:2.0mm  
Positions:02~80



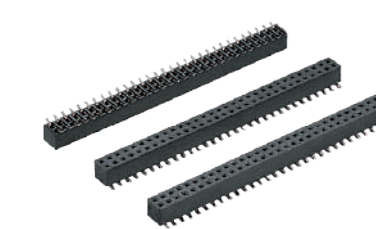
512

Pin Header SMT  
Pitch:2.0mm  
Positions:02~80



513

Female Header  
Pitch:2.0mm  
Positions:02~80



513

Female Header SMT  
Pitch:2.0mm  
Positions:02~80



516

Mini Jumper  
Pitch:2.54/2.0mm  
Positions:02



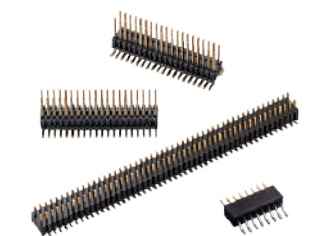
517

Mini DIN Jack  
Positions:03~09



512

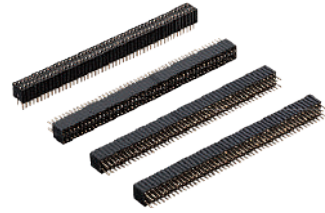
Pin Header  
Pitch:1.27\*2.54mm  
Positions:02~80



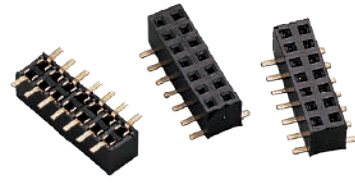
512

Pin Header SMT  
Pitch:1.27\*2.54mm  
Positions:02~80

# Board to Board



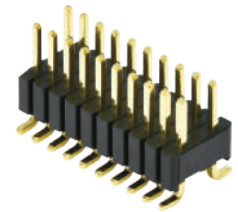
**513**  
Female Header  
Pitch:1.27\*2.54mm  
Positions:02~80



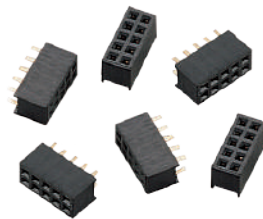
**513**  
Female Header SMT  
Pitch:1.27\*2.54mm  
Positions:02~80



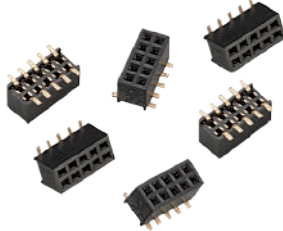
**512**  
Pin Header  
Pitch:1.27\*1.27mm  
Positions:02~80



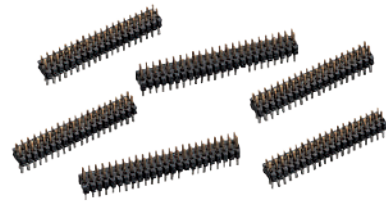
**512**  
Pin Header SMT  
Pitch:1.27\*1.27mm  
Positions:02~80



**513**  
Female Header  
Pitch:1.27\*1.27mm  
Positions:02~80



**513**  
Female Header SMT  
Pitch:1.27\*1.27mm  
Positions:02~80



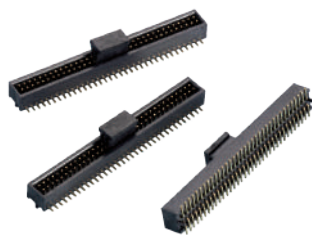
**512**  
Pin Header  
Pitch:1.0mm  
Positions:10~120



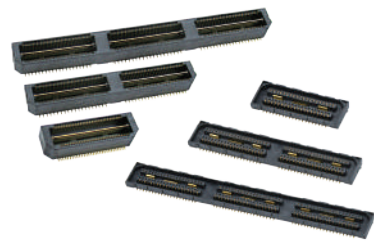
**512**  
Pin Header  
Pitch:1.0mm  
Positions:10~120



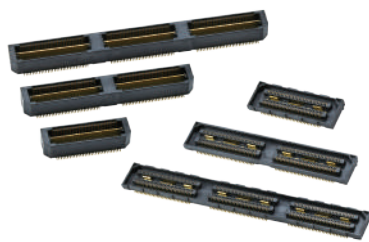
**513**  
Female Header SMT  
Pitch:1.0mm  
Positions:10~120



**514**  
Box Header SMT  
Pitch:1.0mm  
Positions:10~120



**519**  
High Speed Board to Board  
Pitch:0.8mm  
Positions:28,40,56,80,84,120



**519**  
High Speed Board to Board  
Pitch:0.5mm  
Positions:40,60,80,120,180



# 40<sup>th</sup> ★ YEARS ★

## CHANT SINCERE 40 ANNIVERSARY

Founded in 1985 | 41+ Years

Chant Sincere has over 40 years of manufacturing experience, specializing in high-quality connectors and cable assemblies, providing the most suitable connectivity solutions for various industries.

We sincerely thank you for your trust and ongoing support of Chant Sincere! We will continue to improve and strive to serve you, and we look forward to further cooperation and achieving more milestones together!

CHANT SINCERE CO., LTD.