



詮欣股份有限公司  
CHANT SINCERE CO., LTD.

# D-Sub





詮欣股份有限公司  
CHANT SINCERE CO., LTD.

## Contents

■ About Chant Sincere .....	P.1
Quality System .....	P.3
Competencies & Technology .....	P.5
■ D-Sub Series .....	P.7
D-Sub PCB Right Angle	
■ High Density D-Sub Series .....	P.15
High Density D-Sub PCB Right Angle	





# About Chant Sincere



- **Chant Sincere Co., Ltd.** was set up in 1985., With the management concept of “Honest, Innovative, Quality, Longterm” to design and manufacture connector and cable. Keep developing new innovative products and integrating vertically from R&D, tooling, assembly and quality control to meet the demands (quality/cost/delivery) from customers. Chant Sincere Co., Ltd. Has been constructing various of product families to provide a total solution to customers.  
The connector and cable products are widely used in many different application , such as Computing, Industrial & Automation, Telecommunication, Automotive, Waterproof, Consumer and Medical Industry.

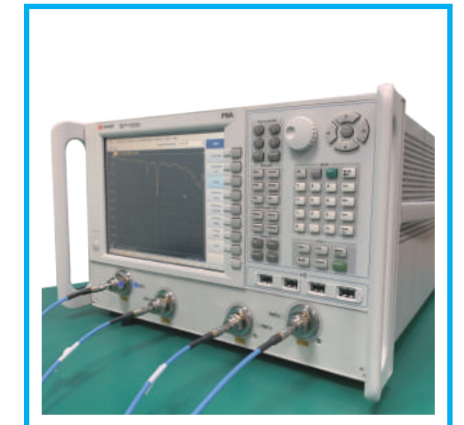
- **Chant Sincere** won the “National Bedrock Award” & “Small Giant Award” from Taiwan Connector maker competition and got many “Best Supplier awards” from Global customers. We are focusing on improving our design and manufacture technology, and we have been applying for a lot of international patents for our products including I/O connector, Board to Board connector, Waterproof connector, Industrial Connector, Automotive connector, Memory Card connector and adaptor, High Speed connector/cable (USB3.1), Audio & Vidio connector and cable (HDMI,Display Port)...etc.  
Chant Sincere Co., Ltd. Has been growing up as a global professional manufacturer for connector and cable.

## The Core Competence of Chant Sincere Co.,Ltd. including.

- Over 36 Years Manufacture Experience
- ODM/OEM Capability
- Vertical Integration (Design, Tooling, Manufacturing, Test)
- Automation Capability
- Precise Tooling Center
- Wide Range of Product Line
- Systematic Testing Process
- Customized Capability
- Quality System (ISO,IATF)
- National Awards Rising Sun Awards/Best Supplier Awards



**ISO 13485**  
**IATF 16949**  
**ISO 14001**  
**ISO 9001**



## Quality systems

COXOC Quality Assurance department meets our customers' quality requirements by practicing continual improvement in our quality assurance processes and increasing customers' satisfaction in the quality of our products.

The effectiveness of COXOC QA operation is certified by well-known organizations such as ISO9001 Quality Assurance Management System, ISO 14001 Environmental Management System, ISO/IATF 16949 for Automobile Industry Quality Management System, and ISO13485 Medical Devices Quality Management System, COXOC integrated supply chain and devoted staff has enabled us to build a solid foundation and core capability to better serve our customers. It is COXOC principal to always meet and exceed customer expectation by providing superior products and services. COXOC ultimate goal is to create value for our customers by building collaborative and mutually beneficial relationships.



## Competencies & Technology

The R&D Center at Chant Sincere leads the industry in research, design, and manufacturing of numerous key parts. This center has successfully developed for both wired and wireless solutions for computer peripherals, communication systems, and automobiles/industrial/medical equipment. Our solid R&D team formed a strong foundation in advance manufacturing technology and superior quality control that also enabled high value adding service for customers.

USB type C connectors is an example of the fruits of our research. This miniature and unidirectional interface provides many useful functions such as lighting data transfer rate up to 10 Gbits/s, DP ALT Mode high-definition video signal support, and brilliant 100W charging capability. Chant Sincere advanced the research further into higher specs such as USB 3.2 and USB 4.0 and offers customized solution for various of industrial applications. We delivered comprehensive solutions in bridging the diverse need for new interface and solve on-going product design issues for customers.

QSFP-DD is an ultra-fast interface that transmit data at 400Gbps speed. At this speed, stringent requirement for signal integrity and operating temperature is inviable which imposed huge challenges for the industry. At Chant Sincere, we implemented comprehensive computational software, state of art measuring equipment and eminent R&D capability to aid the solution delivering process. The analysis process includes simulation under CST MSW (Time Domain Simulation), ANSYS HFSS (Frequency Domain Simulation) for signal integrity as well as real-time measurement using test boards and PNA (up to 43.5GHz) to deliver quality reports for signal integrity (S-parameter, Gain compression, conversion gain/loss, noise level). We further performed simulation of its operating temperature using Icepak (Heat transfer and fluid flow simulator). This enabled the performance optimization for heat dissipation solution. With the above R&D skills we successfully delivered the desired professional service within the shortest time frame for our customers.



# D-Sub



## D-Sub Application

- The D-subminiature or D-sub is a common type of electrical connector. They are named for their characteristic D-shaped metal shield. When they were introduced, D-sub connectors were among the smallest connectors used on computer systems. A D-sub contains two or more parallel rows of pins or sockets usually surrounded by a D-shaped metal shield that provides mechanical support, ensures correct orientation, and may screen against electromagnetic interference.

## Application

- DeskTop
- Notebook
- Embedded System
- Projector
- VGA Card/ Mother Board
- Medical

## Product Characteristics

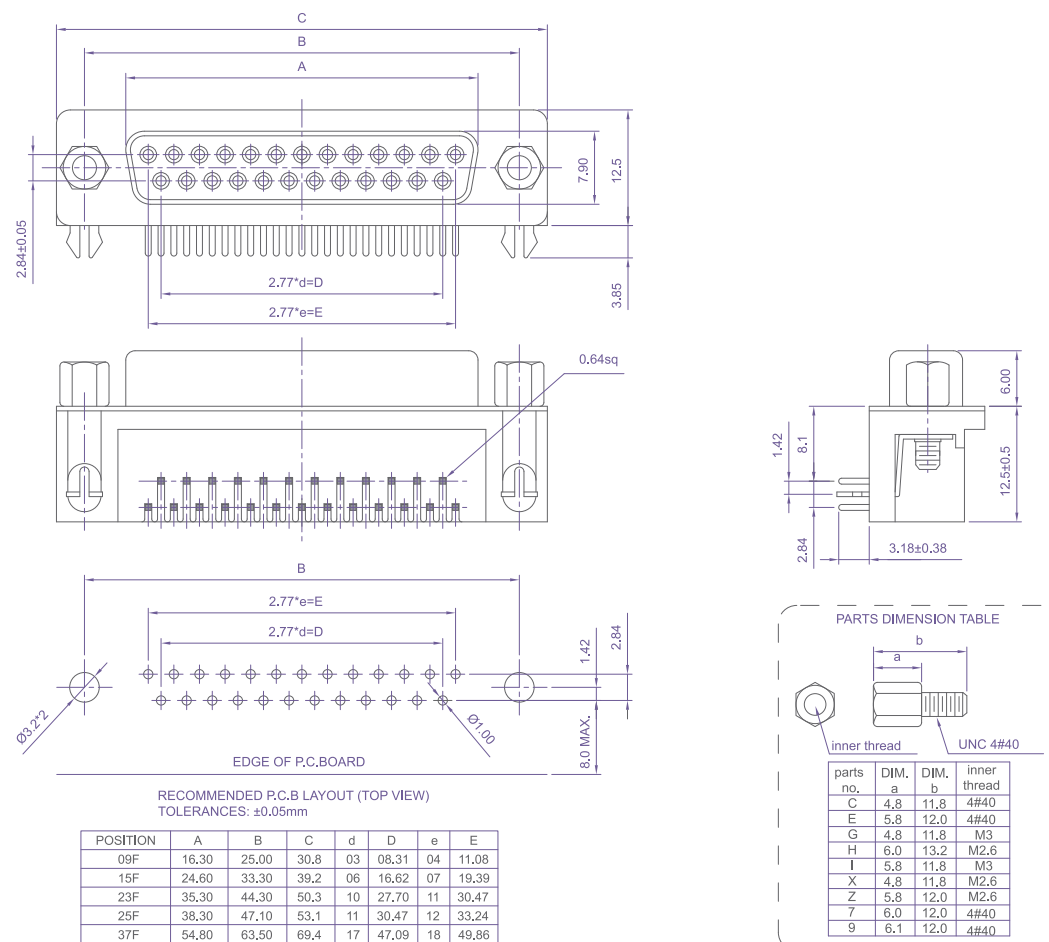
- 5 sizes with connector mating layouts ranging from 9 positions to 50 positions.
- Standard D-Sub have signal contacts with current rating of 5A
- D-shaped metal shield provides seamless connection and reduce electromagnetic interference.
- D-sub connectors, including solder cup, PCB, press-fit and wire wrap connections.



## D-Sub PCB Right Angle



## Drawing



## Specification

Description		D-Sub PCB Right Angle
Part no.		205AKXXFXXAAC3
Positions		9, 15, 25, 37
Material	Insulator	Thermal Plastic UL94V-0
	Contacts	Copper Alloy
	Shell	Stainless Steel
	Shell	Steel
	Rivet,Boardlock	Copper Alloy
Contact Plating	Underplate	50u" Nickel
	Contact Area	1u"~30u" Selective Gold
	Solder Tails Area	100u" Tin/Lead (Brighten Tin) or 100u" Tin/Lead Free (Brighten Tin/Matte Tin)
Electrical	Operation Voltage	250 VAC Max.
	Current Rating	3 Amps Max.
	Contact Resistance	15 mohms Max.
	Insulation Resistance	3000 Mohms Min @ 500 VDC
	Dielectric Withstanding Voltage	1000 VAC / Minute
	Operating Temperature	-55°C TO +105°C

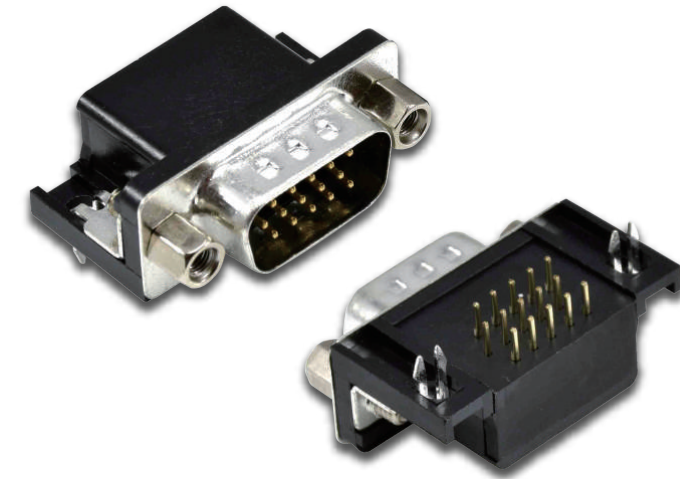
**D-Sub Series**

Product List	Description	Part no.
	Male / Female , 9~37Pin, Cable Assembly Solder	201A
	Male / Female , 9~37Pin, PCB Mount 180°	202A
	Male / Female , 9~37Pin, PCB Mount 180°	203A
	Male / Female , 9~37Pin, PCB Mount 180°	204A
	Male / Female , 9~37Pin, PCB Mount 90°	205A
	Male / Female , 9~37Pin, PCB Mount 90°	206A
	Male / Female , 9~37Pin, PCB Mount 90°	207A

Product List	Description	Part no.
	Male / Female , 9~37Pin, PCB Mount 90°	208A
	Male / Female , 9~37Pin, PCB Mount 90°	209A
	Male / Female , 9~37Pin, Cable Assembly Crimp	210A
	Male / Female Cable Assembly Crimp	211A
	Male / Female , 9~37Pin, Cable Assembly I.D.C	212A
	Male / Female , 9~37Pin, PCB Mount 90°	213A
	Male, 9Pin, PCB Mount 180°	219A



# High Density D-Sub



## High Density D-Sub Application

- The D-subminiature or D-sub is a common type of electrical connector. They are named for their characteristic D-shaped metal shield. When they were introduced, D-sub connectors were among the smallest connectors used on computer systems. A D-sub contains two or more parallel rows of pins or sockets usually surrounded by a D-shaped metal shield that provides mechanical support, ensures correct orientation, and may screen against electromagnetic interference.

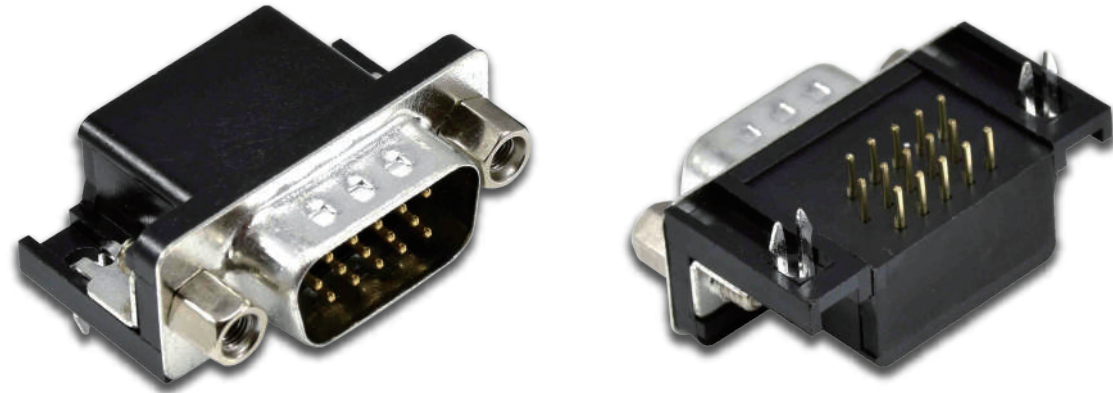
## Application

- DeskTop
- Notebook
- Embedded System
- Projector
- VGA Card/ Mother Board
- Medical

## Product Characteristics

- 5 sizes with connector mating layouts ranging from 15 positions to 78 positions.
- Standard D-Sub have signal contacts with current rating of 3A
- D-shaped metal shield provides seamless connection and reduce electromagnetic interference.
- D-sub connectors, including solder cup, PCB, press-fit and wire wrap connections.

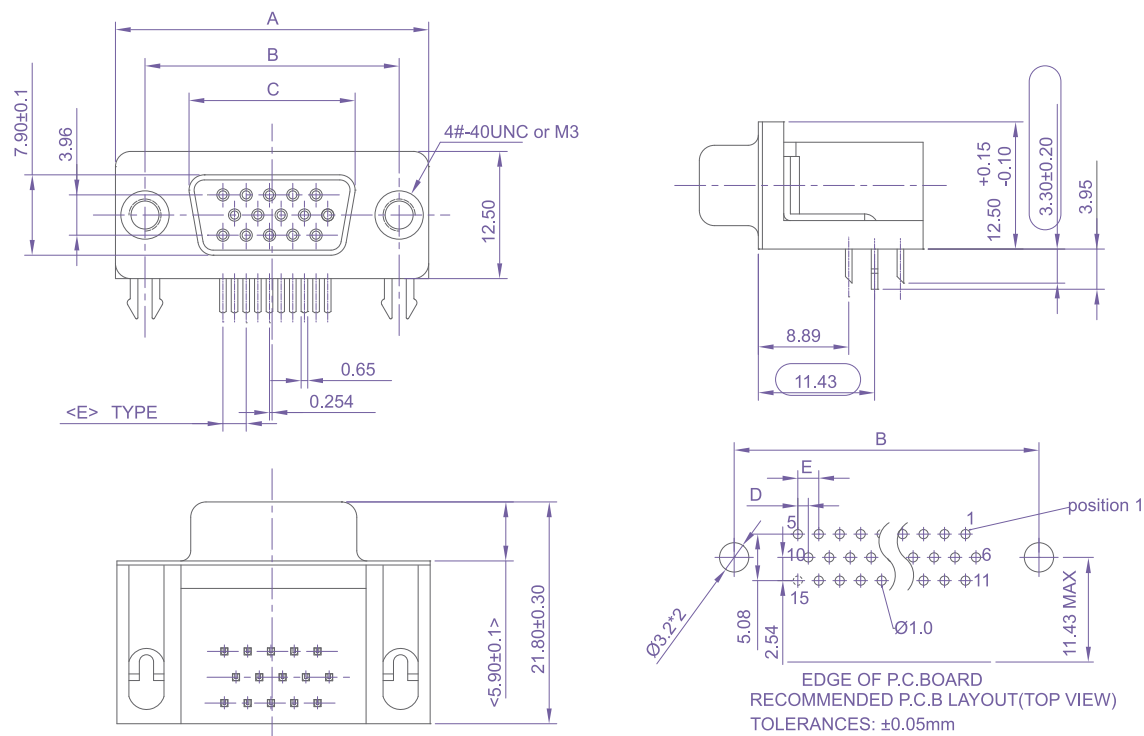
### High Density D-Sub PCB Right Angle



### Specification

Description		High Density D-Sub PCB Right Angle
Part no.		103AEXFXXBXA3
Positions		15, 26, 44, 62
Material	Insulator	PBT+30% GLASS FIBER(UL94V-0).
	Contacts	BRASS
	Underplate	40u" Min. Nickel
	Contact Area	1u"~30u" Selective Gold
	Solder Tails Area	80u" Min. Tin(Lead Free) Or Gold Flash
	SHELL	Steel, N=40u" Nickel Or T=40u" Tin Over 40u" Cu X=1st Cu:40u"~200u". 2nd 40~200u"Nickel Plated. 3rd 80~300u" Tin Plated
Electrical	Current Rating	5 Amps
	Contact Resistance	15 mohms Max.
	Insulation Resistance	1000 Mohms Min. at 500 VDC
	Dielectric Strength	1000 VAC / Minute
	Operating Temperature	-55°C To +105°C

### Drawing



POS.	A	B	C	E
15	30.80	24.99	16.30	2.29
26	39.2	33.32	23.20	2.29
44	53.10	47.04	38.30	2.29
62	70.00	63.50	54.8	2.41



■ High Density D-Sub

Product List	Description	Part no.
	Male / Female , 15~62Pin, Cable Assembly Solder	101A
	Male / Female , 15~62Pin, PCB Mount 180°	102A
	Female, 15Pin, PCB Mount 180°	102F
	Male / Female , 15~62Pin, PCB Mount 90°	103A
	Male, 15Pin, Cable Assembly	104A
	Male / Female , Cable Assembly Crimp	105A



2020 09 rev 1



詮欣股份有限公司  
CHANT SINCERE CO., LTD.

7F-2, No.188, Sec. 3, Datong Rd., Xizhi Dist.,  
New Taipei City 221, Taiwan (R.O.C.)

TEL : 886-2-8647-1251 / FAX : 886-2-8647-1842

Mail : [service@coxoc.com.tw](mailto:service@coxoc.com.tw)