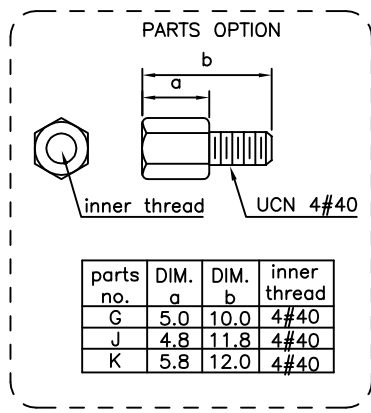
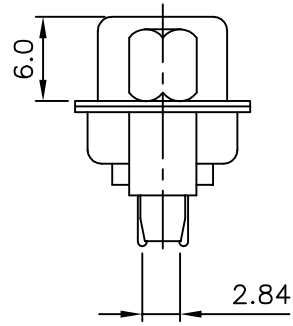


RECOMMENDED P.C.B. LAYOUT(TOP VIEW)
TOLERANCES: $\pm 0.05\text{mm}$



parts no.	DIM. a	DIM. b	inner thread
G	5.0	10.0	4#40
J	4.8	11.8	4#40
K	5.8	12.0	4#40



PROCESS OPTION
DIM. FOR "X"

I	5.8mm
R	6.5mm
S	5.0mm

SPECIFICATION
MATERIAL
 Insulator: Thermal Plastic UL94V-0
 Contacts: Copper Alloy
 Shell: Steel
 Rivet, Boardlock: Copper alloy
CONTACT PLATING
 Underplate: 50u"~100u" Nickel
 Contact Area: 1u"~30u" Selective Gold
 Solder Tails Area: 100u"~200u" Tin/Lead or 100u"~200u" Tin(Lead Free)
ELECTRICAL
 Operation Voltage: 250 VAC Max.
 Current Rating: 3 Amps Max.
 Contact Resistance: 15 Mohms Max.
 Insulation Resistance: 3000 Mohms Min @ 500 VDC
 Dielectric Withstanding Voltage: 1000 VAC / Minute
 Operating Temperature: -55°C TO +105°C
 Part no.

203 A X XX M X X X X A X
 1 2 3 4 5 6 7 8 9 10 11

- 1. SERIES NO.
- 2. TYPE:
A=Standard
- 3. ENVIRONMENT PROTECTION MATERIAL:
E=RoHS
- 4. CONTACT NUMBER:
09 15 25 37
- 5. CONTACT TYPE:
M=Male (PBT)
- 6. CONTACT PLATING:
G=Gold Flash
- 7. SHELL PLATING:
P=Tin+Dimple Plated
- 8. PROCESS OPTION:
DIM. FOR "X"
I=5.8mm 180°(Z)Rivet
- 9. PARTS OPTION:
G=Rear Rivet+Fixed Screws (5*10mm)
- 10. PARTS DIMENSION
A=Fully Loaded
- 11. INSULATOR:
3=Black

POSITION	A	B	C	D
9M	16.92	25.00	30.8	19.2
15M	25.25	33.30	39.2	27.7
19M	30.60	38.86	44.8	32.8
23M	35.90	44.30	50.3	38.3
25M	38.96	47.10	53.1	41.1
37M	55.42	63.50	69.4	57.3

UNLESS OTHERWISE SPECIFIED TOLERANCE	
ANG.	$\pm 5^\circ$
0.	± 0.5
.0	± 0.3
.00	± 0.2



CHANT SINCERE CO., LTD
 TEL:886-02-86471251 FAX:886-02-86472962

REV.	DESCRIPTION	DATE	SIZE	REV.	FILE NAME:
		11/05/07	A4	C	203AKXXMXXIGAX
		03/08/07			
		09/06/01			