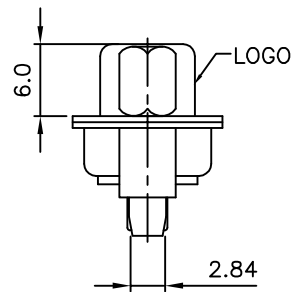
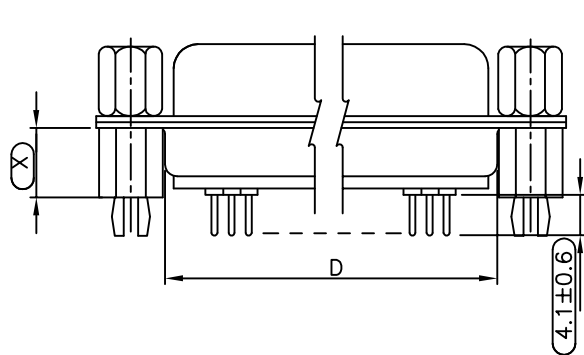


COXOC 202AXX
ENVIRONMENT PROTECTION MATERIAL.
CONTACT PLATING

SPECIFICATION
MATERIAL
 Insulator: Thermal Plastic UL94V-0
 Contacts: Copper Alloy
 Shell: Stainless Steel
 Rivet, Boardlock: Copper Alloy
CONTACT PLATING
 Underplate: 50u"~100u" Nickel
 Contact Area: 1u"~30u" Selective Gold
 Solder Tails Area: 100u"~200u" Tin/Lead or 100u"~200u" Tin(Lead Free)
ELECTRICAL
 Operation voltage: 250 VAC max.
 Current rating: 3 Amps max.
 Contact resistance: 15 mohms max.
 Insulation resistance: 3000 Mohms min @ 500 VDC
 Dielectric withstanding voltage: 1000 VAC / minute
 Temperature Range: -55°C TO +105°C
 Part no.

202 A X X X X X X X X X X
1 2 3 4 5 6 7 8 9 10 11

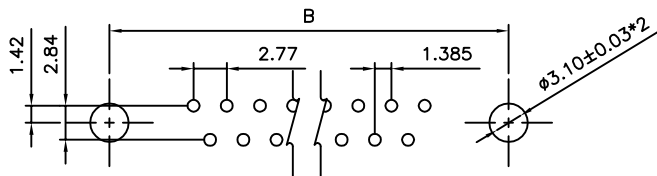
- 1. SERIES NO.
- 2. TYPE: A=Standard
- 3. GREEN OPTION: E=RoHS
- 3. CONTACT NUMBER: 09 15 19 23 25 37
- 4. CONTACT TYPE: F=Female
- 5. CONTACT AREA PLATING: G=Gold Flash S=Gold Flash (Selective) T=Tin plated
- 8. PROCESS OPTION: DIM. FOR "X" I=5.8mm Boardlock Rivet
- 9. PARTS OPTION: G=REAR Rivet+Fixed HEX -Screws(5.0mm*10.0mm)
- 10. CONTACT INSERTING OPTIN: A=FULLY LOADED
- 11. INSULATOR COLOR: 3=Black



PROCESS OPTION DIM. FOR "X":

I	5.8mm
R	6.5mm
S	5.0mm
3	5.8mm
6	6.7mm

POSITION	A	B	C	D
9F(B,D,G,S)	16.30	25.00	30.8	19.2
15F(B,D,G,S)	24.60	33.30	39.2	27.7
19F(B,D,G,S)	30.00	38.86	44.8	32.8
23F(B,D,G,S)	35.30	44.30	50.3	38.3
25F(B,D,G,S)	38.30	47.10	53.1	41.1
37F(B,D,G,S)	54.80	63.50	69.4	57.3



RECOMMENDED P.C.B LAYOUT (TOP VIEW)
TOLERANCES: ±0.05mm

PARTS DIMENSION TABLE

parts no.	DIM. a	DIM. b	inner thread
G	5.0	10.0	4#40
J	4.8	11.8	4#40
K	5.8	12.0	4#40
M	5.8	10.0	4#40
N	5.0	8.5	4#40
P	4.8	11.8	M3
S	5.8	12.0	4#40+WASHER

For SIP
For cmk/cpk

UNLESS OTHERWISE SPECIFIED TOLERANCE	
ANG.	±5°
0.	±0.5
.0	±0.3
.00	±0.2
SCALE: AS SHOWN	UNIT: mm
DRAWN RITA	11/21/12
CHECKED	/ /
APPROVED	/ /



CHANT SINCERE CO., LTD
TEL:886-02-86471251 FAX:886-02-86472962

DRAWN NAME: D-SUB PCB STRAIGHT

PRODUCT NO. 202AXXXXXXXXXXAX

FILE NAME: 202AKXXFXXIGAA

REV.	DESCRIPTION	DATE	SIZE	REV.
			A4	1