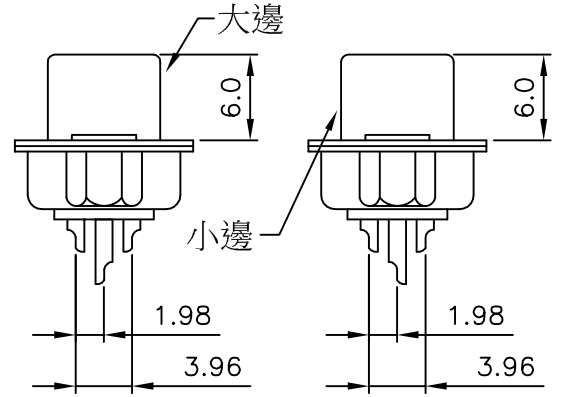
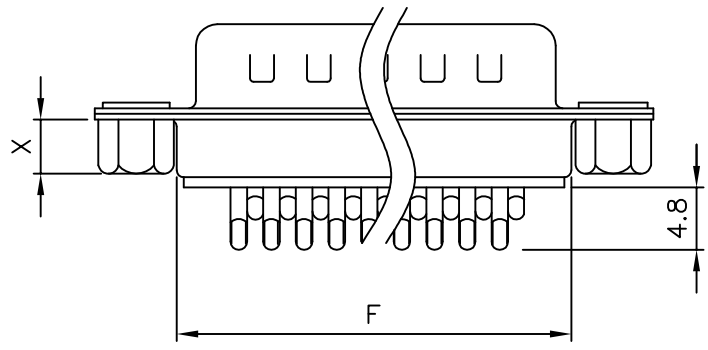


SPECIFICATION
 MATERIAL
 Insulator: Thermal Plastic UL94V-0
 Contacts: Copper Alloy
 Shell: Stainless Steel
 Rivet,Boardlock: Copper Alloy
 CONTACT PLATING
 Underplate: 50u"~150u" Nickel
 Contact Area: 1u"~30u" Selective Gold
 Solder Tails Area: 100u"~300u" Tin(Lead Free)
 ELECTRICAL
 Operation Voltage: 250 VAC Max.
 Current Rating: 3 Amps Max.
 Contact Resistance: 15 mohms Max
 Dielectric Withstanding Voltage: 1000 VAC / minute
 Temperature Range: -55°C to +105°C
 PART NO.

101 A X XX X X X X A X
 1 2 3 4 5 6 7 8 9 10 11

- 1.SERIES NO.
- 2.TYPE: A=Standard
- 3.GREEN OPTION:
E=RoHS(Bright)
- 4.CONTACT NUMBER
15 26 44 62
- 5.CONTACT TYPE:
M=MALE(杯口朝大邊)
- 6.CONTACT AREA PLATING:
C=Gold Flash
C=15u" Gold (Selective)
D=30u" Gold (Selective)
- 7.SHELL PLATING:
P=Tin Plated+Dimple
- 8.PROCESS OPTION:
DIM OF "X"
C=3.8mm OPEN HEX RIVET
- 9.PARTS OPTION:
E=Rear Rivet
- 10.CONTACT INSERTING OPTIN:
A=Fully Loaded
- 11.INSULATOR COLOR:
3=Black



杯口朝大邊(M,C) 杯口朝小邊(N,Q)

POSITION	A	B	C	D	E	F
15(M,C,N,Q)	16.92	25.00	30.8	2.29	1.14	19.2
26(M,C,N,Q)	25.25	33.30	39.2	2.29	1.14	27.7
44(M,C,N,Q)	38.96	47.10	53.1	2.29	1.14	41.1
62(M,C,N,Q)	55.42	63.50	69.4	2.41	1.20	57.3

PROCESS OPTION
 DIM. FOR "X":

C	3.8mm
D	5.8mm
K	2.5mm

UNLESS OTHERWISE SPECIFIED TOLERANCE
 ANG. ±5°
 0. ±0.5
 .0 ±0.3
 .00 ±0.2



CHANT SINCERE CO.,LTD
 TEL:886-02-86471251 FAX:886-02-86472962

SCALE:	AS SHOWN	UNIT:	mm
DRAWN	JOE	12/09/09	
CHECKED	/ /		
APPROVED	/ /		

DATE	12/09/09	DRAWN NAME:	HIGH DENSITY D-SUB SOLDER
DATE	08/15/05	PRODUCT NO.	101AXXXXXXXXXAX
DATE	08/13/04	FILE NAME:	101AKXXMXXCEAX

REV.	DESCRIPTION	DATE