

W/O Flange

W/Flange

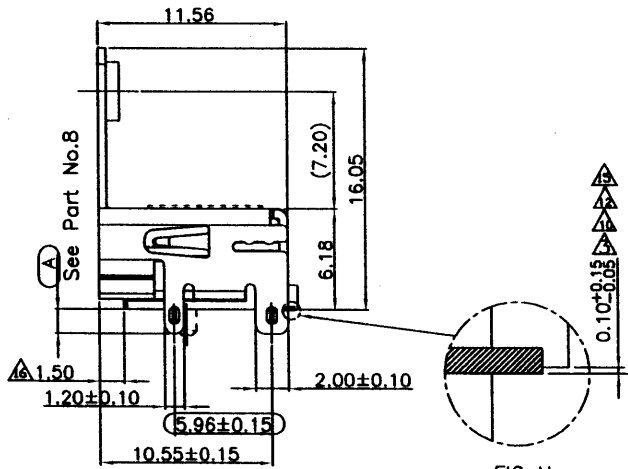
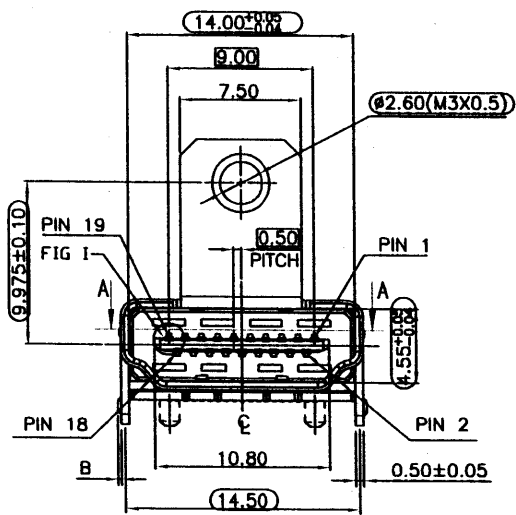
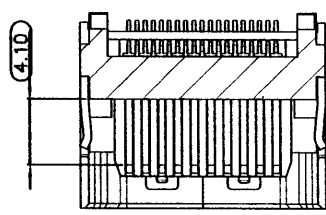
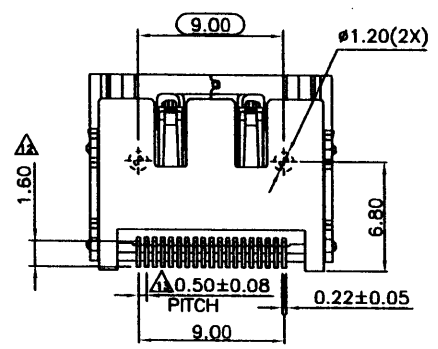


FIG H



SECTION A-A

- NOTES:  
 MATERIALS:  
 Insulator: Thermal Plastic UL94V-0  
 Contacts: Copper Alloy  
 Shell: Copper Alloy or Shell  
 CONTACT PLATING  
 Underplate: 50u"~100u" Nickel  
 Contact Area: 1u"~30u" Selective Gold or 30u"Pd-Ni+2u"Gold  
 Solder Tails Area: 100u"~200u" Tin(Lead Free)  
 SHELL PLATING  
 50u" Nickel Plated or Copper/50u" Nickel Plated  
 PART NO. 908 DA2 X 19 X X X X X X X X X X  
 1 2 3 4 5 6 7 8 9 10
- 1.SERIES NO.  
 908=HDMI
- 2.TYPE:  
 DA2=SMT
- 3.GREEN OPTION:  
 J=SONY SS-00259(Bright)  
 (Reserved)  
 K=SONY SS-00259(Matte)  
 (Reserved)  
 E=RoHS(Bright)  
 F=RoHS(Matte)  
 G=RoHS(Bright)  
 (Halogen Free)  
 H=RoHS(Matte)  
 (Halogen Free)
- 4.CONTACT NUMBER:  
 19=19Pin
- 5.CONTACT TYPE:  
 F=Female  
 P=Female  
 (E=11.95,F=0.39,G=2.60)  
 (E=12.65,F=1.09,G=3.50)
- 6.CONTACT AREA PLATING:  
 S=Gold Flash (Selective)  
 R=3u" Gold (Selective)  
 A=5u" Gold (Selective)  
 B=10u" Gold (Selective)  
 C=15u" Gold (Selective)  
 D=30u" Gold (Selective)  
 Z=30u"Pd-Ni+2u"GOLD (Selective)
- 7.SHELL MATERIAL PLATING:  
 A=Spcc(Copper/Nickel Plated)  
 B=Spcc(3u" Brighten Gold)(掛鍍)  
 C=Spcc(Gold Flash)  
 G=Copper Alloy(Gold Flash)  
 N=Copper Alloy(Nickel Plated)  
 3=Copper Alloy(3u" Brighten Gold)(掛鍍)
- 8.SHELL TYPE:  
 C=DIP(A=2.20mm,B=0.20)  
 D=DIP+Flange(A=2.20mm,B=0.20)  
 K=DIP(A=2.20mm,B=0.32)  
 N=DIP+Flange(A=1.50mm B=0.23)  
 O=DIP+Flange(A=1.20mm B=0.23)
- 9.PROCESS OPTION  
 0=W/O Peg+Tray  
 1=W/Peg+Tray  
 2=W/O Peg+Tape Reel  
 3=W/Peg+Tape Reel  
 4=W/O Peg+Tray+Mylar  
 (13.5\*7.0\*0.1)  
 5=W/Peg+Tray+Mylar  
 (13.5\*7.0\*0.1)  
 6=W/Peg+Tape Reel+Mylar  
 (13.5\*7.0\*0.1)  
 7=W/O Peg+Tape Reel+Mylar  
 (13.5\*7.0\*0.1)  
 8=G=W/O Peg+Tape Reel+Mylar  
 (15\*10\*0.1)  
 H=W/O Peg+Tray+Mylar  
 (15\*10\*0.1)
- 10.INSULATOR:  
 1=WHITE  
 3=Black

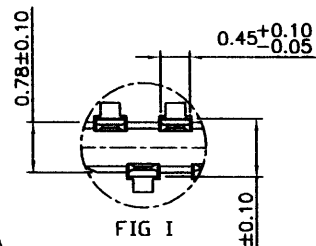


FIG I



ASIP

UNLESS OTHERWISE SPECIFIED TOLERANCE
ANG. ±1°
0.3 ±0.3
.0 ±0.25
.00 ±0.20

SCALE: AS SHOWN	UNIT: mm
03/04/2015 DRAWN RITA	03/04/2015
07/15/2013 CHECKED	03/09/15
07/02/13 APPROVED	3/9/15
DATE	SIZE A4 REV. AH

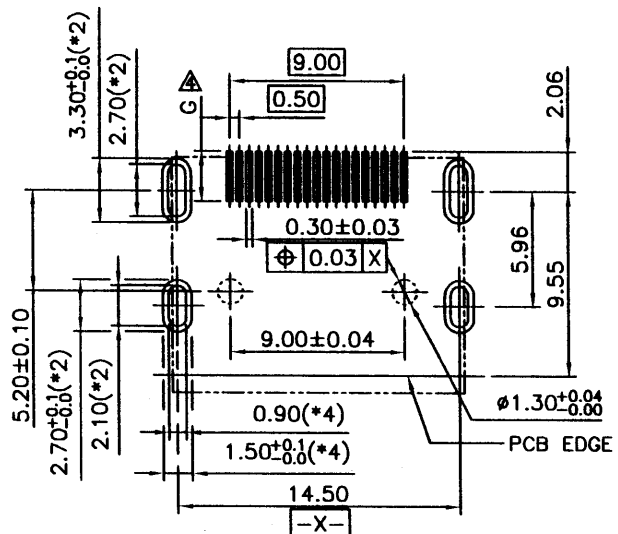


**CHANT SINCERE CO., LTD**  
 TEL:886-02-86471251 FAX:886-02-86472962

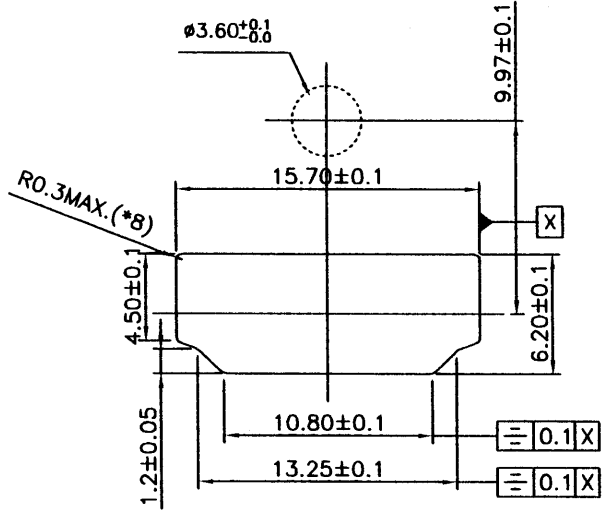
DRAWN NAME:  
 HDMI FEMALE SMT THROUGH HOLE TYPE  
 (1/2)

PRODUCT NO. 908DA2X19XXXXX  
 FILE NAME: C-908DA2H19FXNCOX(GA)

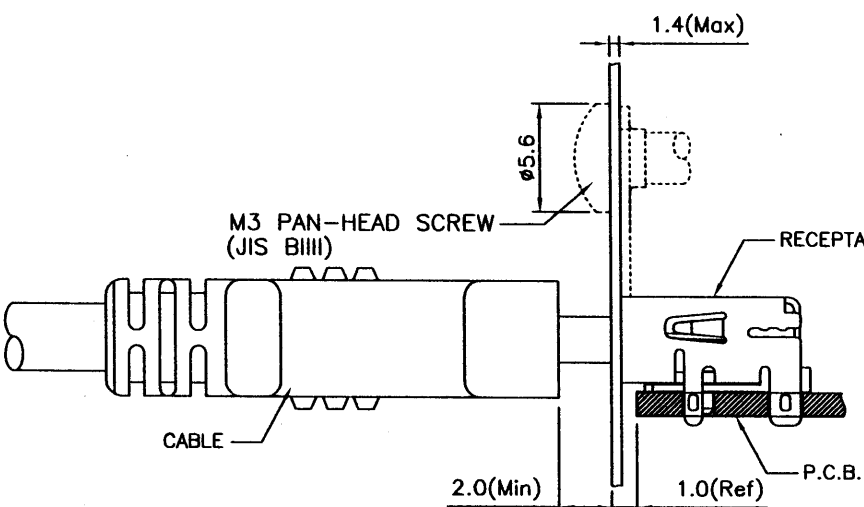
REV.	DESCRIPTION
AH	ECN-1503005(Jason) Add Sip.
AG	ECN-1307030(Raffy) (9,F)Add SPCC(Gold flash) Option.
AF	ECN-1307005(Wendy) (4,C)



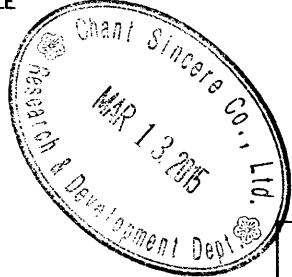
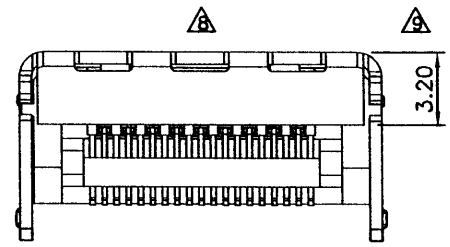
RECOMMENDED PCB LAYOUT (THICKNESS=1.6±0.15mm)  
TOLERANCES: ±0.05mm



REFERENCE PANEL CUT OUT DIMENSION



REFERENCE MOUNT DIMENSION



UNLESS OTHERWISE SPECIFIED TOLERANCE	
ANG.	±1°
0.	±0.3
.0	±0.25
.00	±0.20
SCALE: AS SHOWN	UNIT: mm



CHANT SINCERE CO., LTD  
TEL:886-02-86471251 FAX:886-02-86472962

AH	ECN-1503005(Jason)	SEE 1/2	03/04/2015	DRAWN RITA	03/04/2015	DRAWN NAME:
AG	ECN-1307030(Raffy)	SEE 1/2	07/15/2013	CHECKED	03/09/15	HDMI FEMALE SMT THROUGH HOLE TYPE (2/2)
AF	ECN-1307005(Wendy)	SEE 1/2	07/02/13	APPROVED	3/19/15	PRODUCT NO. 908DA2X19XXXXXX
REV.	DESCRIPTION		DATE	SIZE A4	REV. AH	FILE NAME: C-908DA2H19FXNCOX(GA)