

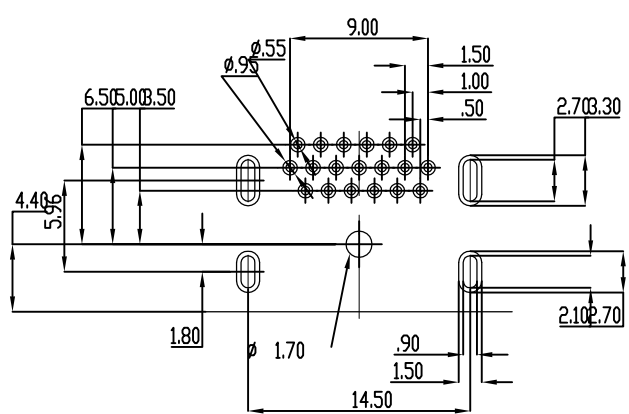
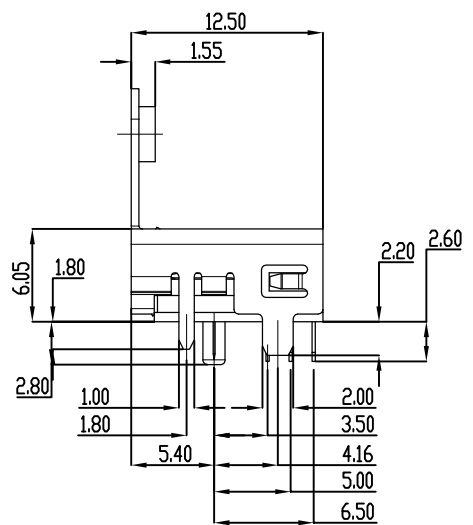
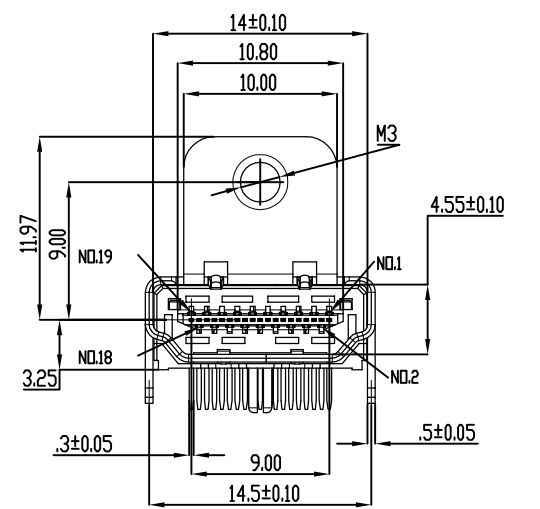
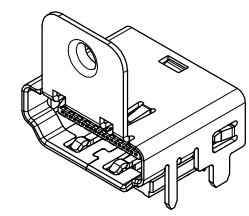
PIN POSITION

SPECIFICATION
MATERIAL
 Insulator: Thermal Plastic, rated UL94V-0
 Contacts: Copper Alloy
 Shell: Steel
CONTACT PLATING
 Underplate: 50u"~100u" Nickel
 Contact area: 10u" Gold
 Solder tails area: 100u"~200u" Matte Tin
ELECTRICAL
 Operation voltage: 40 V
 Current rating: 0.5 Amps Min.
 Contact resistance: 10 mohms Max.
 Insulation resistance: 100 Mohms Min. @ 500 VDC
 Dielectric withstanding voltage: 500 VAC / minute
 Temperature range: -20°C TO +85°C
 Mating cycles: 10,000 insertions

Part no.

908 A H 19 F B I A 7 I A A 3
 1 2 3 4 5 6 7 8 9 10 11 12

- | | |
|--|--|
| 1.SERIES NO.
908=HDMI | 7.SOLDER AREA PLATING:
T=Tin |
| 2.TYPE
A=DIP | 8.MATTING TYPE:
A7=A TYPE, TYPE 7 |
| 3.GREEN OPTION:
H=RoHS(Matting)(Halogen Free) | 9.SHELL PLATING:
T=Tin |
| 4.CONTACT NUMBER:
19 | 10.FILL IT WITH 'A'
11.PACKING STYLE:
A=TRAY |
| 5.CONTACT TYPE:
F=FEMALE | 12.INSULATOR COLOR:
3=Black |
| 6.CONTACT AREA PLATING:
B=10u" GOLD | |



RECOMMENDED PCB LAYOUT
 TOLERANCES: ± 0.05mm

UNLESS OTHERWISE SPECIFIED TOLERANCE	
ANG.	± 5°
.0	± 0.5
.0	± 0.3
.00	± 0.2
SCALE:	AS SHOWN
UNIT:	mm
DRAWN	ROBEN
CHECKED	/ /
APPROVED	/ /
DATE	04/07/10

CHANT SINCERE CO.,LTD TEL:886-02-86471251 FAX:886-02-86472962	
DRAWN NAME:	HDMI DIP A7 TYPE Conn.
PRODUCT NO.	908AH19FBTA7TAA3
FILE NAME:	C-908AH19FBTA7TAA3(GA)

REV.	DESCRIPTION	DATE	SIZE	REV.
			A4	A