

POSITION	A	B	C	D
9M	16.92	25.00	30.8	19.2
15M	25.25	33.30	39.2	27.7
19M	30.60	38.86	44.8	32.8
23M	35.90	44.30	50.3	38.3
25M	38.96	47.10	53.1	41.1
37M	55.42	63.50	69.4	57.3

SPECIFICATION

MATERIAL

Insulator: Thermal Plastic UL94V-0

Contacts: Copper Alloy

Shell: Steel

Rivet, Boardlock: Copper Alloy

CONTACT PLATING

Underplate: 50u"~150u" Nickel

Contact Area: 1u"~50u" Selective Gold

Solder Tails Area: 100u"~300u" Tin(Lead Free)

ELECTRICAL

Operation Voltage: 250 VAC Max.

Current Rating: 3 Amps Max.

Contact Resistance: 15 mohms Max.

Insulation Resistance: 3000 Mohms Min @ 500 VDC

Dielectric Withstanding Voltage: 1000 VAC / Minute

Temperature Range: -55°C To +105°C

PART NO.

201 A X XX M X X A A A X  
1 2 3 4 5 6 7 8 9 10 11

1.SERIES NO.

2.TYPE: A=Standard

3.GREEN OPTION:

F=RoHS(Matte)

4.CONTACT NUMBER:

09 15 25 37

5.CONTACT TYPE:

M=Male

6.CONTACT AREA PLATING:

G=Gold Flash

7.SHELL PLATING:

P=Tin Plated Over 50u" Min. Copper Plated+Dimple

8.PROCESS OPTION

A=Thru. Hole

9.PARTS OPTION

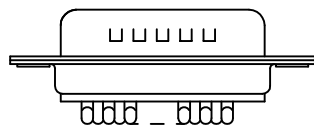
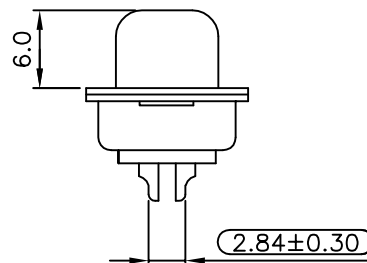
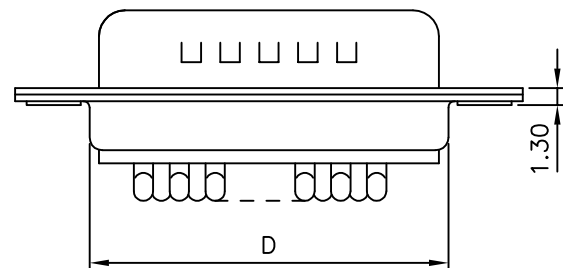
A=Non Accessories

10.CONTACT INSERTING OPTION

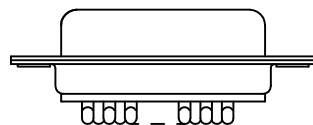
A=Fully Loaded

11.INSULATOR COLOR

3=Black



(第7項P,Q,S適用 W/Dimple)



(第7項Z適用 W/O Dimple)



UNLESS OTHERWISE SPECIFIED TOLERANCE			
ANG.	±5°		
0.	±0.5	<b>CHANT SINCERE CO., LTD</b> TEL:886-02-86471251 FAX:886-02-86472962	
.0	±0.3		
.00	±0.2		
SCALE: AS SHOWN	UNIT: mm		
DRAWN	PEARL	06/23/2015	DRAWN NAME:
CHECKED	/ /	/ /	D-SUB SOLDER
APPROVED	/ /	/ /	PRODUCT NO. 201AXXXMXXAAAX
REV.		0	FILE NAME: 201AKXXMXXAAAX

REV.	DESCRIPTION	DATE