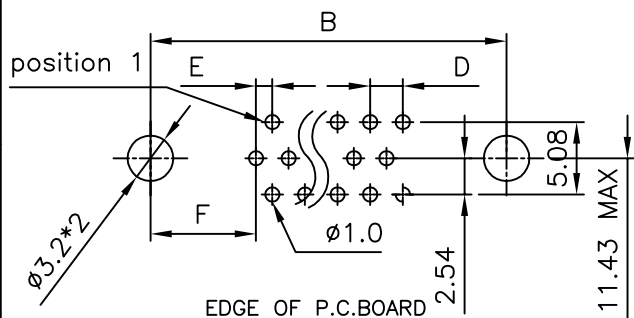
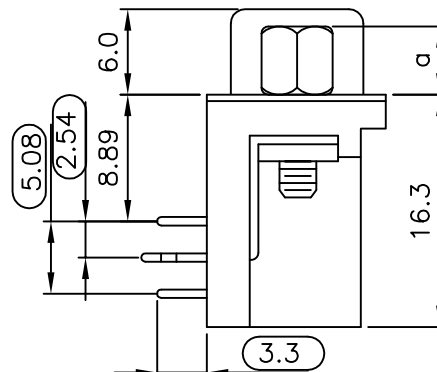
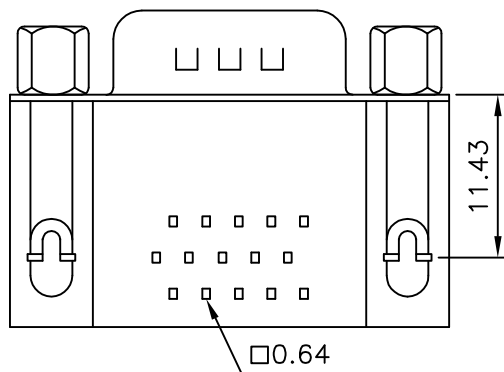


**SPECIFICATION**  
**MATERIAL**  
 Insulator: Thermal Plastic UL94V-0  
 Contacts: Copper Alloy  
 Shell: Steel  
 Rivet,Boardlock: Copper Alloy  
**CONTACT PLATING**  
 Underplate: 50u"~100u" Nickel  
 Contact Area: 1u"~30u" Selective Gold  
 Solder Tails Area: 100u"~200u" Tin(Lead Free) or 1u" Gold  
**ELECTRICAL**  
 Operation Voltage: 250 VAC max.  
 Current rating: 3 Amps max.  
 Contact resistance: 15 mohms min @ 500 VDC  
 Dielectric withstanding voltage: 1000 VAC / minute  
 Temperature Range: -55°C to +105°C  
 Part no.

103 A X XX X X X X B X X  
 1 2 3 4 5 6 7 8 9 10 11

- |                          |                                |
|--------------------------|--------------------------------|
| 1.SERIES NO.             | 8.PROCESS OPTION:              |
| 2.TYPE: A=Standard       | B=Rivet W/Boardlock            |
| 3.GREEN OPTION:          | 9.PARTS OPTION:                |
| E=RoHS(Bright)           | B=4#40 Thread Rivet            |
| 4.CONTACT NUMBER:        | 10.PARTS DIMENSION             |
| 15 26 44 62              | C=Fixed Hex-Screws(4.8*11.8mm) |
| 5.CONTACT TYPE:          | 11.INSULATOR COLOR:            |
| M=Male                   | 3=Black                        |
| 6.CONTACT PLATING:       |                                |
| G=Gold Flash Over All    |                                |
| S=Gold Flash (Selective) |                                |
| C=15u" Gold (Selective)  |                                |
| D=30u" Gold (Selective)  |                                |
| 7.SHELL PLATING:         |                                |
| P=Tin+Dimple             |                                |



RECOMMENDED P.C.B LAYOUT(TOP VIEW)  
 TOLERANCES: ±0.05mm

For SIP  
 For cmk/cpk

POSITION	A	B	C	D	E	F
15M	16.92	25.00	30.8	2.29	1.14	7.04
26M	25.25	33.30	39.2	2.29	1.14	6.88
44M	38.96	47.10	53.1	2.29	1.14	6.88
62M	55.42	63.50	69.4	2.41	1.20	7.00

UNLESS OTHERWISE SPECIFIED TOLERANCE ANG. ±5° 0. ±0.5 .0 ±0.3 .00 ±0.2	 <b>CHANT SINCERE CO., LTD</b> TEL:886-02-86471251 FAX:886-02-86472962		
			SCALE: AS SHOWN
DRAWN	PEARL	05/17/12	DRAWN NAME:
CHECKED	/	/	D-SUB PCB RIGHT ANGLE MALE
APPROVED	/	/	PRODUCT NO. 103AXXXXXXBBXX
REV.	K		FILE NAME: 103AKXXMXXBBCX

REV.	DESCRIPTION	DATE	SIZE	REV.	FILE NAME
1			A4	K	103AKXXMXXBBCX